

MSW Disposal Capacity Analysis

Avg 2017-18 Usage Rate = 964 cy/day
 Avg 2018-19 Usage Rate = 1,072 cy/day

Cell 8
 Air Space Available = 1,490,000 cy
 Assumed Density = 1200 lb/cy
 Capacity Available = 894,000 tons
 Assumed Usage Rate = 1,356 cy/day
 Annual Growth Rate = 5.0 %
 Months of Capacity = 36.1 mo
 Projected Completion = November, 2023

Cell 9
 Air Space Available = 1,740,000 cy
 Assumed Density = 1200 lb/cy
 Capacity Available = 1,044,000 tons
 Assumed Usage Rate = 1,560 cy/day
 Annual Growth Rate = 5.0 %
 Months of Capacity = 36.7 mo
 Projected Completion = December, 2026


Cell 10
 Air Space Available = 1,480,000 cy
 Assumed Density = 1200 lb/cy
 Capacity Available = 888,000 tons
 Assumed Usage Rate = 1,745 cy/day
 Annual Growth Rate = 5.0 %
 Months of Capacity = 27.9 mo
 Projected Completion = April, 2029

Net Excavation Required
 Cell 9 = 940,000 cy
 Cell 10 = 650,000 cy

Liner Required
 Cell 9 = 11.8 acres
 Cell 10 = 9.7 acres

NOTES:

- TOPOGRAPHY THAT IS SHOWN WAS CURRENT AS OF JULY 5, 2020
 EXCAVATION AND FILLING HAS OCCURRED AFTER THIS DATE.

JOB No. 00177		DESIGNED: GF	PROJ. ENGINEER: GF	 G. Friesen Associates, Inc. 4088 Orchard Drive Lake Oswego, Oregon 97035 Tel: (503) 635-1233 Fax: (866) 533-5543	KNOTT LANDFILL 2021 MSW CELL SEQUENCING PLAN DESCHUTES COUNTY, OREGON	AERIAL TOPOGRAPHY CURRENT AS OF JULY 5, 2020		DRAWING NUMBER: 1	
SCALE: AS SHOWN		DRAWN BY: GF	APPROVED BY: CC					CAD FILE NUMBER: 1	
A 1/15/21 GF ISSUED FOR REVIEW		CHECKED BY: GF	DATE: 1-15-21					SHEET: 1 OF	REV. A
No.	DATE	BY	REVISION						

MSW Disposal Capacity Analysis

Avg 2017-18 Usage Rate = 964 cy/day
 Avg 2018-19 Usage Rate = 1,072 cy/day

Cell 8

Air Space Available = 1,490,000 cy
 Assumed Density = 1200 lb/cy
 Capacity Available = 894,000 tons

Assumed Usage Rate = 1,356 cy/day
 Annual Growth Rate = 5.0 %
 Months of Capacity = 36.1 mo
 Projected Completion = November, 2023

Cell 9

Air Space Available = 1,740,000 cy
 Assumed Density = 1200 lb/cy
 Capacity Available = 1,044,000 tons

Assumed Usage Rate = 1,560 cy/day
 Annual Growth Rate = 5.0 %
 Months of Capacity = 36.7 mo
 Projected Completion = December, 2026

Cell 10

Air Space Available = 1,480,000 cy
 Assumed Density = 1200 lb/cy
 Capacity Available = 888,000 tons

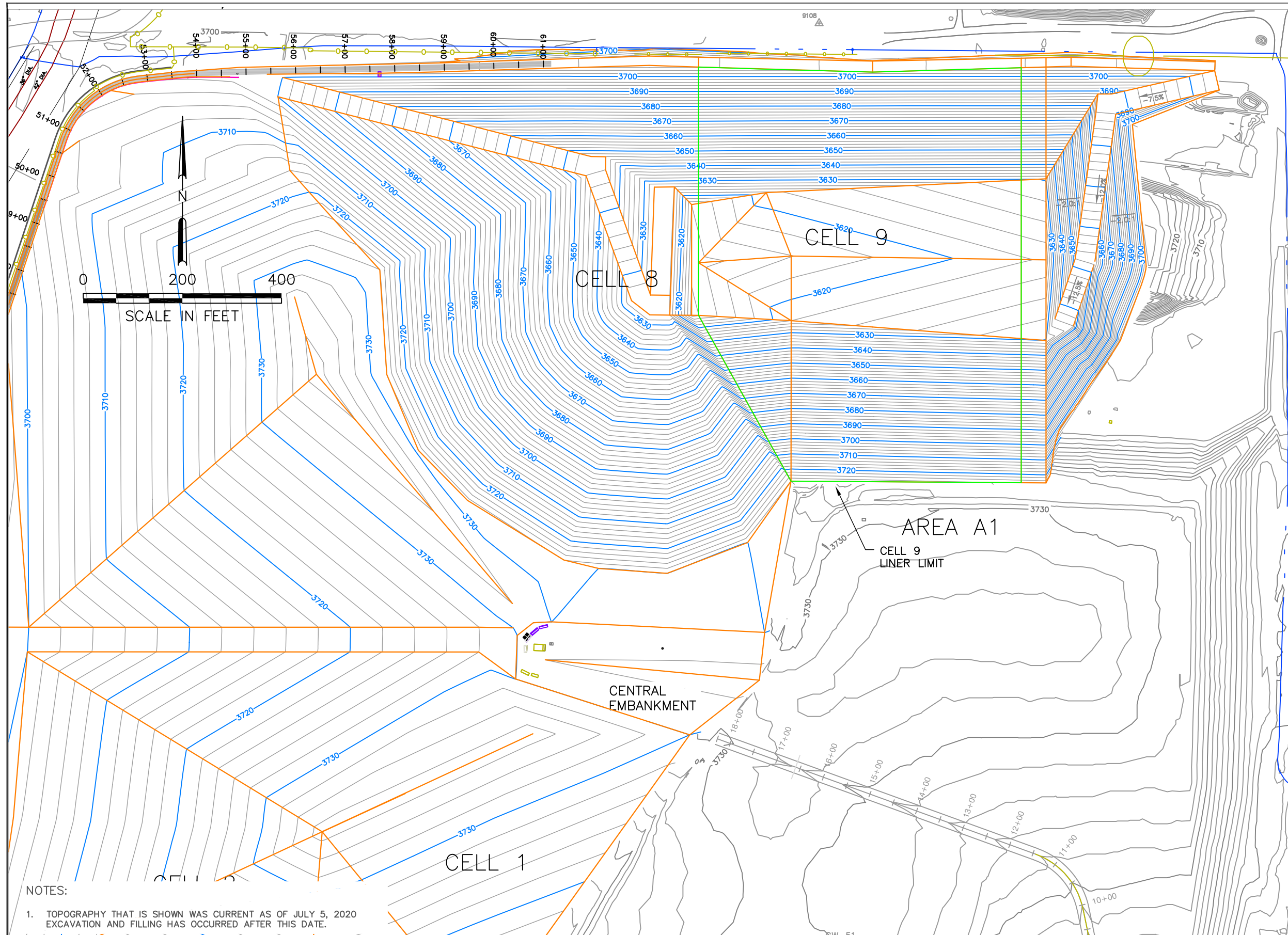
Assumed Usage Rate = 1,745 cy/day
 Annual Growth Rate = 5.0 %
 Months of Capacity = 27.9 mo
 Projected Completion = April, 2029

Net Excavation Required

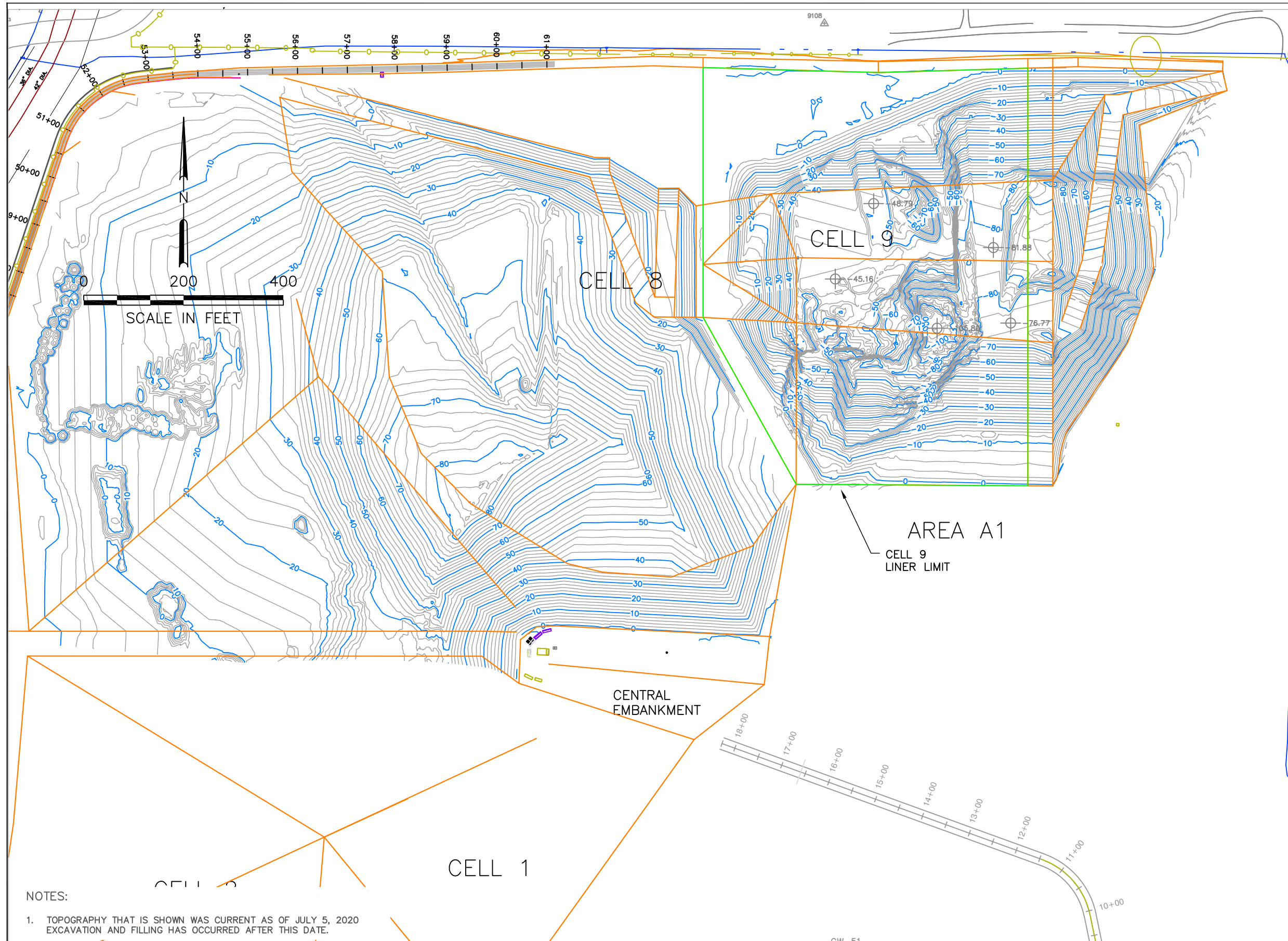
Cell 9 = 940,000 cy
 Cell 10 = 650,000 cy

Liner Required

Cell 9 = 11.8 acres
 Cell 10 = 9.7 acres



JOB No. 00177		DESIGNED: GF	PROJ. ENGINEER: GF	 G. Friesen Associates, Inc. 4088 Orchard Drive Lake Oswego, Oregon 97035 Tel: (503) 635-1233 Fax: (866) 533-5543	KNOTT LANDFILL 2021 MSW CELL SEQUENCING PLAN DESCHUTES COUNTY, OREGON	DRAWING NUMBER: 2	
SCALE: AS SHOWN		DRAWN BY: GF	APPROVED BY: CC			CAD FILE NUMBER: 2	
A 1/15/21 GF ISSUED FOR REVIEW		CHECKED BY: GF	DATE: 1-15-21			SHEET: 2 OF	REV. A
No.	DATE	BY	REVISION				



MSW Disposal Capacity Analysis

Avg 2017-18 Usage Rate = 964 cy/day
 Avg 2018-19 Usage Rate = 1,072 cy/day

Cell 8
 Air Space Available = 1,490,000 cy
 Assumed Density = 1200 lb/cy
 Capacity Available = 894,000 tons
 Assumed Usage Rate = 1,356 cy/day
 Annual Growth Rate = 5.0 %
 Months of Capacity = 36.1 mo
 Projected Completion = November, 2023


Cell 9
 Air Space Available = 1,740,000 cy
 Assumed Density = 1200 lb/cy
 Capacity Available = 1,044,000 tons
 Assumed Usage Rate = 1,560 cy/day
 Annual Growth Rate = 5.0 %
 Months of Capacity = 36.7 mo
 Projected Completion = December, 2026

Cell 10
 Air Space Available = 1,480,000 cy
 Assumed Density = 1200 lb/cy
 Capacity Available = 888,000 tons
 Assumed Usage Rate = 1,745 cy/day
 Annual Growth Rate = 5.0 %
 Months of Capacity = 27.9 mo
 Projected Completion = April, 2029

Net Excavation Required
 Cell 9 = 940,000 cy
 Cell 10 = 650,000 cy

Liner Required
 Cell 9 = 11.8 acres
 Cell 10 = 9.7 acres

- NOTES:
 1. TOPOGRAPHY THAT IS SHOWN WAS CURRENT AS OF JULY 5, 2020
 EXCAVATION AND FILLING HAS OCCURRED AFTER THIS DATE.

		JOB No. 00177		DESIGNED: GF		PROJ. ENGINEER: GF		 G. Friesen Associates, Inc. 4088 Orchard Drive Lake Oswego, Oregon 97035 Tel: (503) 635-1233 Fax: (866) 533-5543		KNOTT LANDFILL 2021 MSW CELL SEQUENCING PLAN DESCHUTES COUNTY, OREGON		CELL 8 MSW FILL DEPTHS CELL 9 EXCAVATION DEPTHS		DRAWING NUMBER: 3	
		SCALE: AS SHOWN		DRAWN BY: GF		APPROVED BY: CC								CAD FILE NUMBER: 3	
				CHECKED BY: GF		DATE: 1-15-21								SHEET: 3 OF	
A		1/15/21		GF		ISSUED FOR REVIEW									
No.		DATE		BY		REVISION									

MSW Disposal Capacity Analysis

Avg 2017-18 Usage Rate = 964 cy/day
 Avg 2018-19 Usage Rate = 1,072 cy/day

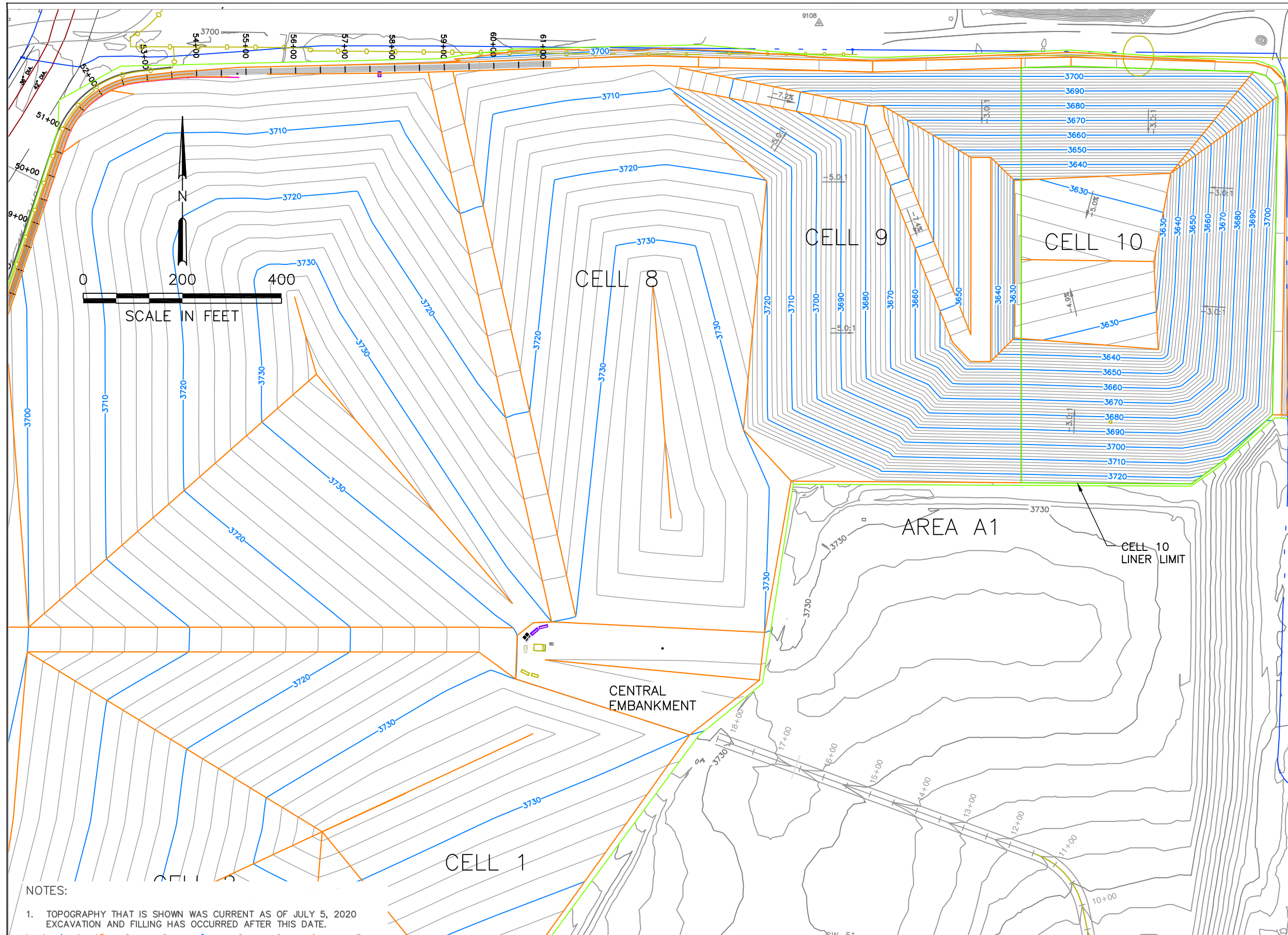
Cell 8
 Air Space Available = 1,490,000 cy
 Assumed Density = 1200 lb/cy
 Capacity Available = 894,000 tons
 Assumed Usage Rate = 1,356 cy/day
 Annual Growth Rate = 5.0 %
 Months of Capacity = 36.1 mo
 Projected Completion = November, 2023

Cell 9
 Air Space Available = 1,740,000 cy
 Assumed Density = 1200 lb/cy
 Capacity Available = 1,044,000 tons
 Assumed Usage Rate = 1,560 cy/day
 Annual Growth Rate = 5.0 %
 Months of Capacity = 36.7 mo
 Projected Completion = December, 2026

Cell 10
 Air Space Available = 1,480,000 cy
 Assumed Density = 1200 lb/cy
 Capacity Available = 888,000 tons
 Assumed Usage Rate = 1,745 cy/day
 Annual Growth Rate = 5.0 %
 Months of Capacity = 27.9 mo
 Projected Completion = April, 2029

Net Excavation Required
 Cell 9 = 940,000 cy
 Cell 10 = 650,000 cy

Liner Required
 Cell 9 = 11.8 acres
 Cell 10 = 9.7 acres



NOTES:
 1. TOPOGRAPHY THAT IS SHOWN WAS CURRENT AS OF JULY 5, 2020
 EXCAVATION AND FILLING HAS OCCURRED AFTER THIS DATE.

JOB No. 00177		DESIGNED: GF	PROJ. ENGINEER: GF	 G. Friesen Associates, Inc. 4088 Orchard Drive Lake Oswego, Oregon 97035 Tel: (503) 635-1233 Fax: (866) 533-5543	KNOTT LANDFILL 2021 MSW CELL SEQUENCING PLAN DESCHUTES COUNTY, OREGON	CELL 9 MSW FILL PLAN CELL 10 SUBGRADE PLAN		DRAWING NUMBER: 4	
SCALE: AS SHOWN		DRAWN BY: GF	APPROVED BY: CC					CAD FILE NUMBER: 4	
A 1/15/21 GF ISSUED FOR REVIEW		CHECKED BY: GF	DATE: 1-15-21					SHEET: 4 OF	REV. A
No.	DATE	BY	REVISION						

MSW Disposal Capacity Analysis

Avg 2017-18 Usage Rate = 964 cy/day
 Avg 2018-19 Usage Rate = 1,072 cy/day

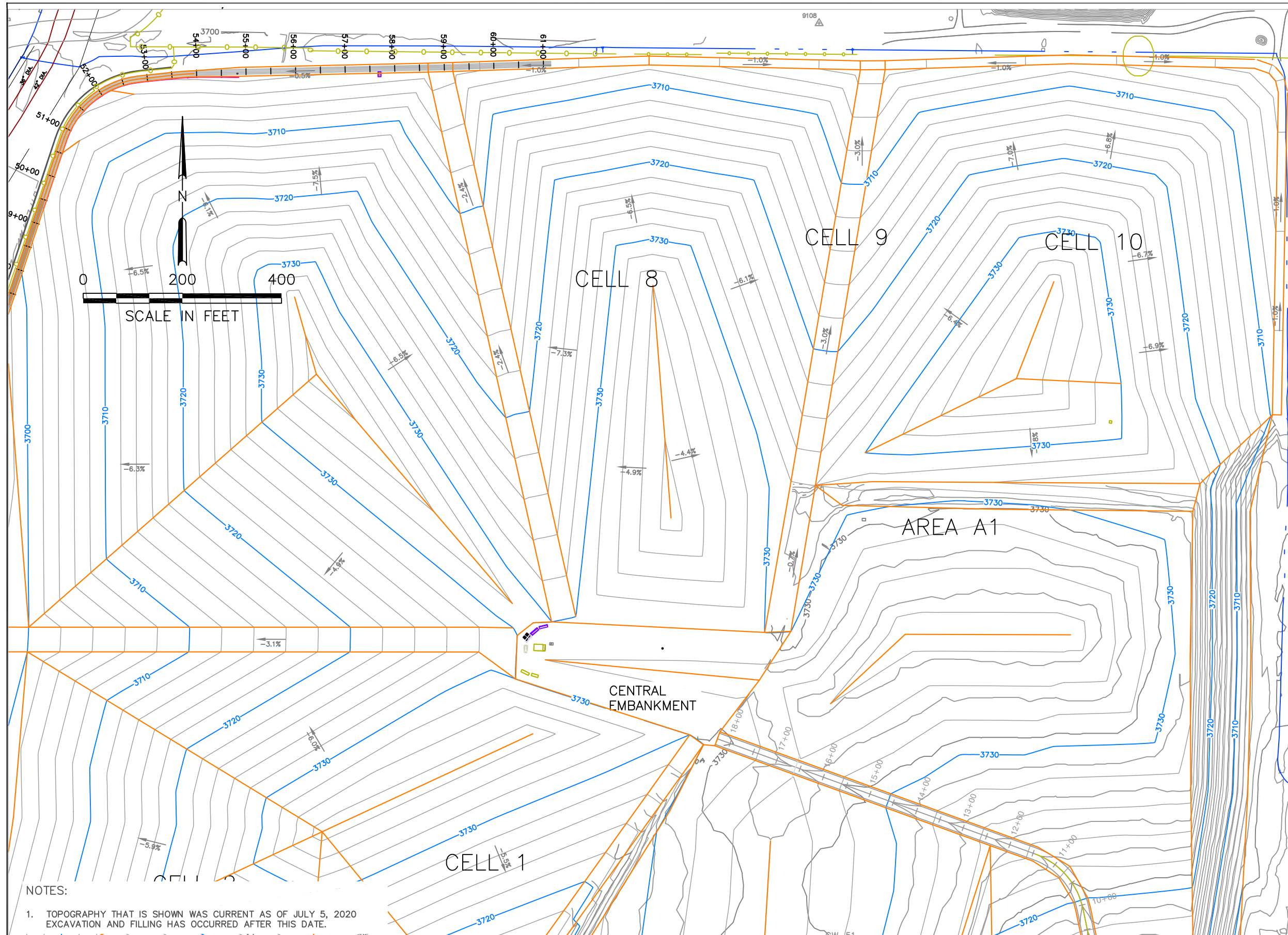
Cell 8
 Air Space Available = 1,490,000 cy
 Assumed Density = 1200 lb/cy
 Capacity Available = 894,000 tons
 Assumed Usage Rate = 1,356 cy/day
 Annual Growth Rate = 5.0 %
 Months of Capacity = 36.1 mo
 Projected Completion = November, 2023

Cell 9
 Air Space Available = 1,740,000 cy
 Assumed Density = 1200 lb/cy
 Capacity Available = 1,044,000 tons
 Assumed Usage Rate = 1,560 cy/day
 Annual Growth Rate = 5.0 %
 Months of Capacity = 36.7 mo
 Projected Completion = December, 2026


Cell 10
 Air Space Available = 1,480,000 cy
 Assumed Density = 1200 lb/cy
 Capacity Available = 888,000 tons
 Assumed Usage Rate = 1,745 cy/day
 Annual Growth Rate = 5.0 %
 Months of Capacity = 27.9 mo
 Projected Completion = April, 2029

Net Excavation Required
 Cell 9 = 940,000 cy
 Cell 10 = 650,000 cy

Liner Required
 Cell 9 = 11.8 acres
 Cell 10 = 9.7 acres



NOTES:
 1. TOPOGRAPHY THAT IS SHOWN WAS CURRENT AS OF JULY 5, 2020
 EXCAVATION AND FILLING HAS OCCURRED AFTER THIS DATE.

JOB No. 00177		DESIGNED: GF	PROJ. ENGINEER: GF	 G. Friesen Associates, Inc. 4088 Orchard Drive Lake Oswego, Oregon 97035 Tel: (503) 655-1233 Fax: (866) 533-5543	KNOTT LANDFILL 2021 MSW CELL SEQUENCING PLAN DESCHUTES COUNTY, OREGON	TOP OF INTERMEDIATE COVER MSW FILL PLAN		DRAWING NUMBER: 5	
SCALE: AS SHOWN		DRAWN BY: GF	APPROVED BY: CC					CAD FILE NUMBER: 5	
A 1/15/21 GF ISSUED FOR REVIEW		CHECKED BY: GF	DATE: 1-15-21					SHEET: 5 OF	REV. A
No.	DATE	BY	REVISION						