



# Solid Waste Management Facility Siting

Solid Waste Advisory Committee (SWAC) Meeting

September 20, 2022





# Agenda

1. Review/ Approve August Meeting Minutes
2. Public Comment
3. Exclusionary Areas Update (Revised for airports and wetlands)
4. Identification of Broad Site Screening Areas of Interest (presentation)
5. Communications Update
6. Next Steps
7. Adjourn



# Progress to Date

1. Developed siting criteria
2. Developed siting process
3. Identified countywide exclusionary areas
4. Applying criteria and exclusionary areas to site identification and broad-site screening – Areas of Interest (presenting today)

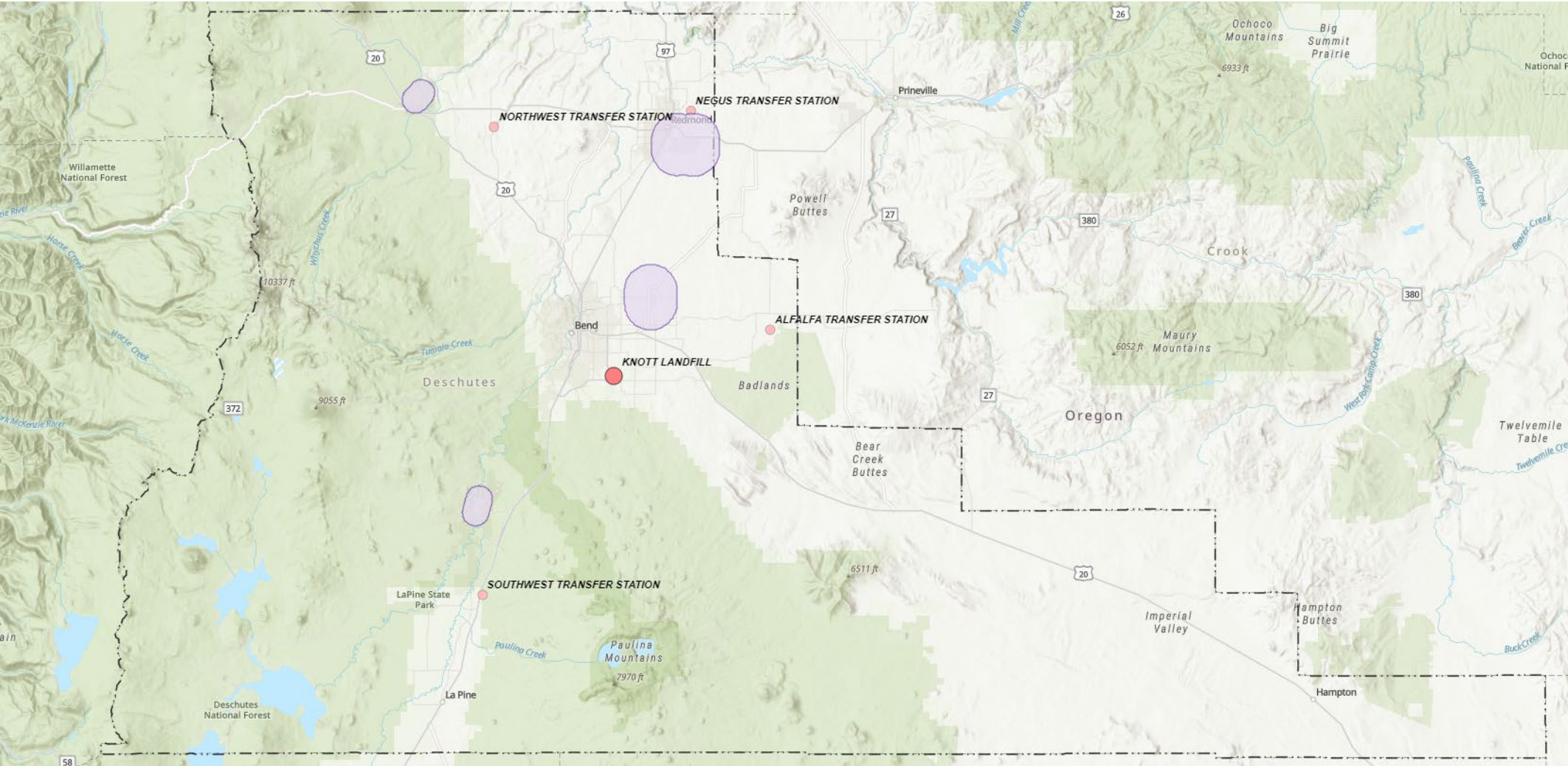


# Countywide Exclusionary Area Criteria

1. City Limits
2. UGB
3. Unincorporated Communities
4. Urban Reserve Area
5. Airport Buffers
6. Wetlands\*
7. FEMA 100-Year Floodplain
8. Sage Grouse Core
9. Metolius ACSC
10. Holocene Fault Buffer
11. Steep Slopes
12. Federal Wilderness Areas



# PUBLIC AIRPORTS

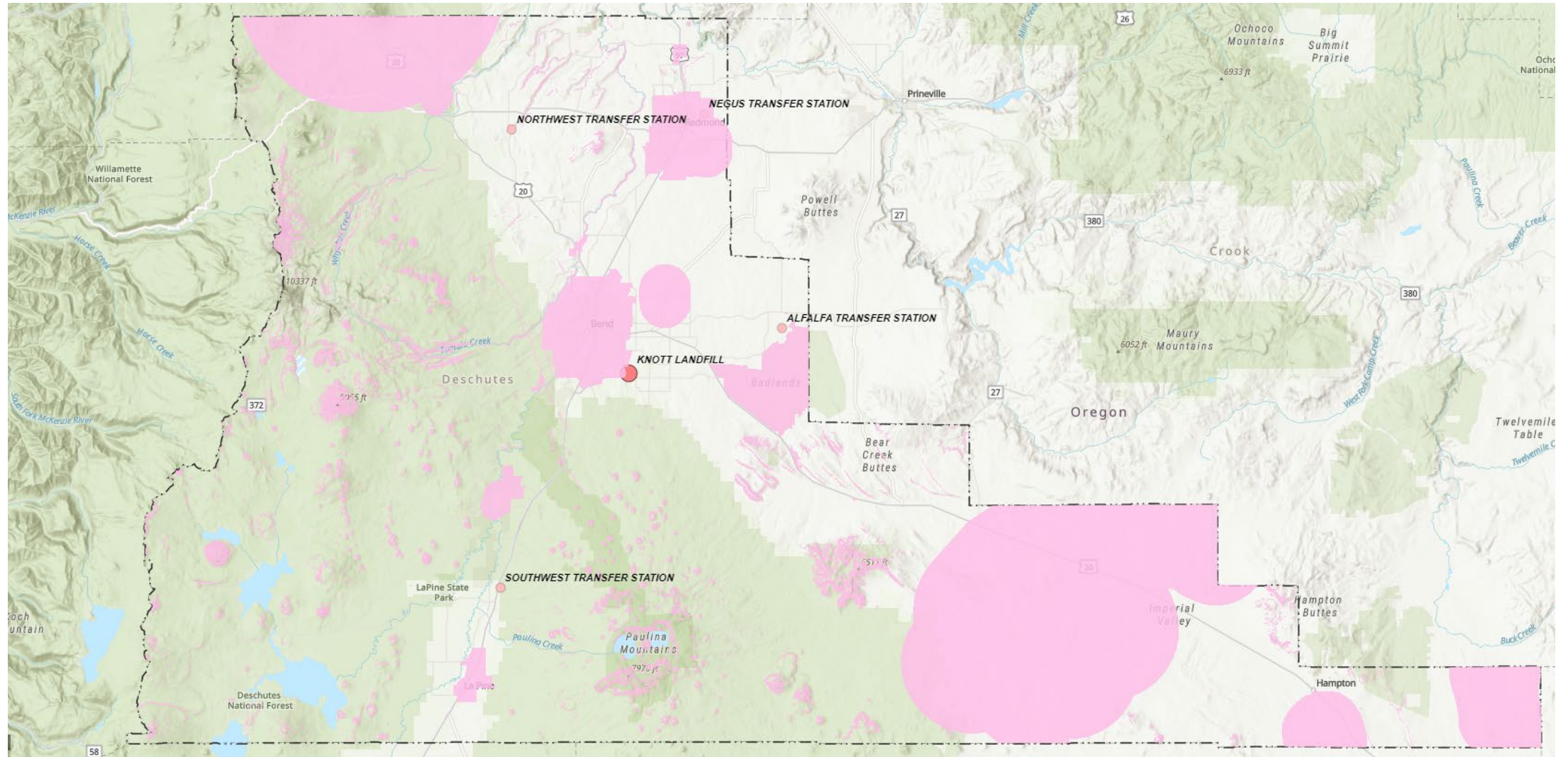


# WETLANDS (NWI)





# CONSOLIDATED EXCLUSIONARY AREAS





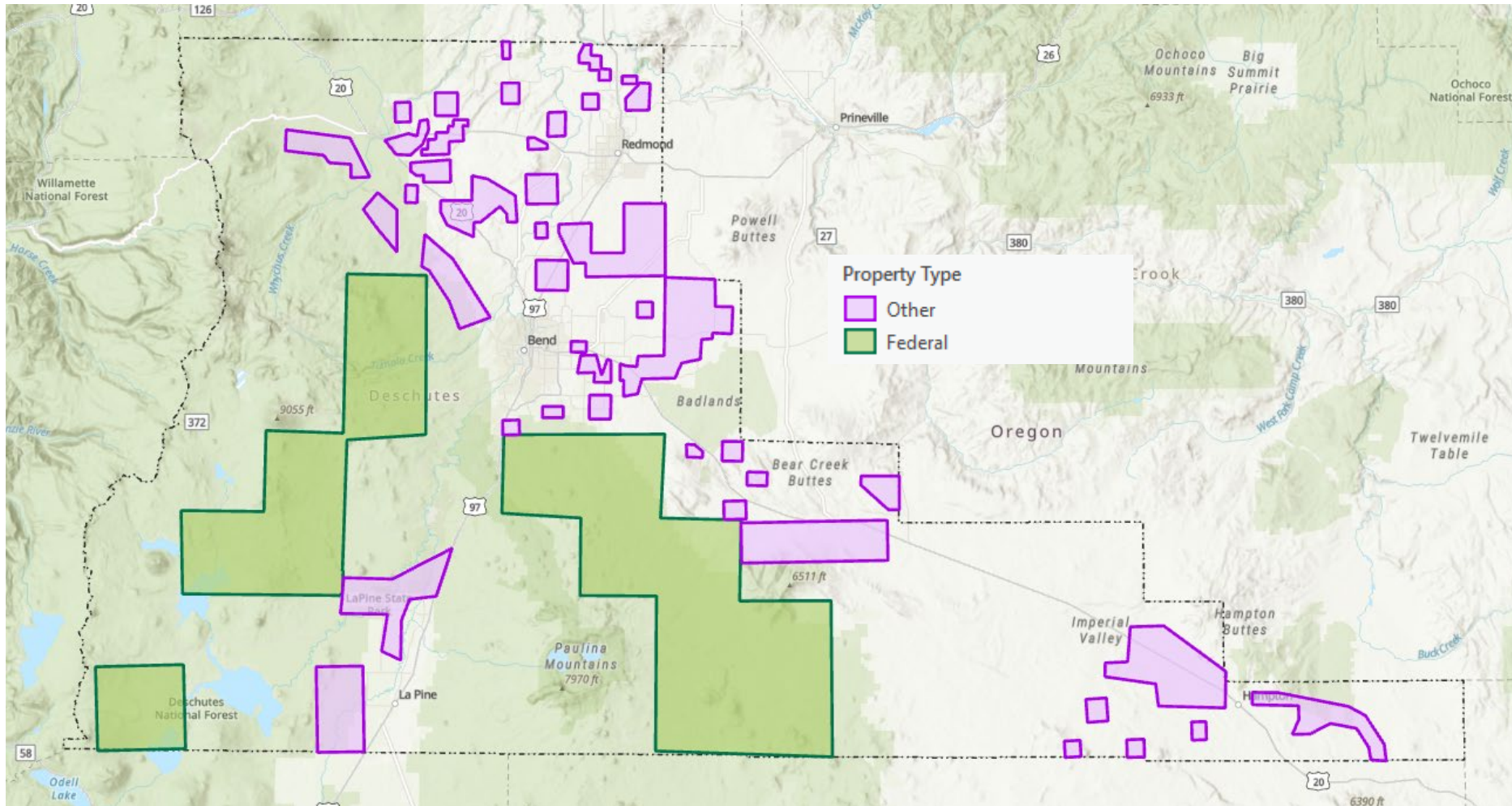
# Broad-Site Screening Areas of Interest

1. Using parcel-level information
2. Parcel size – minimum and maximum
3. Parcel assemblage – 5 or less
4. Outside Exclusionary Areas





# Broad-Site Screening Areas of Interest





# Communications Update

- Communications more intensive as site selection narrows.
- Beginning more targeted outreach as focused area screening occurs in early 2023.
- Continuing to identify outreach opportunities to share Solid Waste Dept. information.
- Open House in April 2023, following March SWAC meeting when finalist sites are shared.



# What's next?

- Community outreach
- Broad site screening