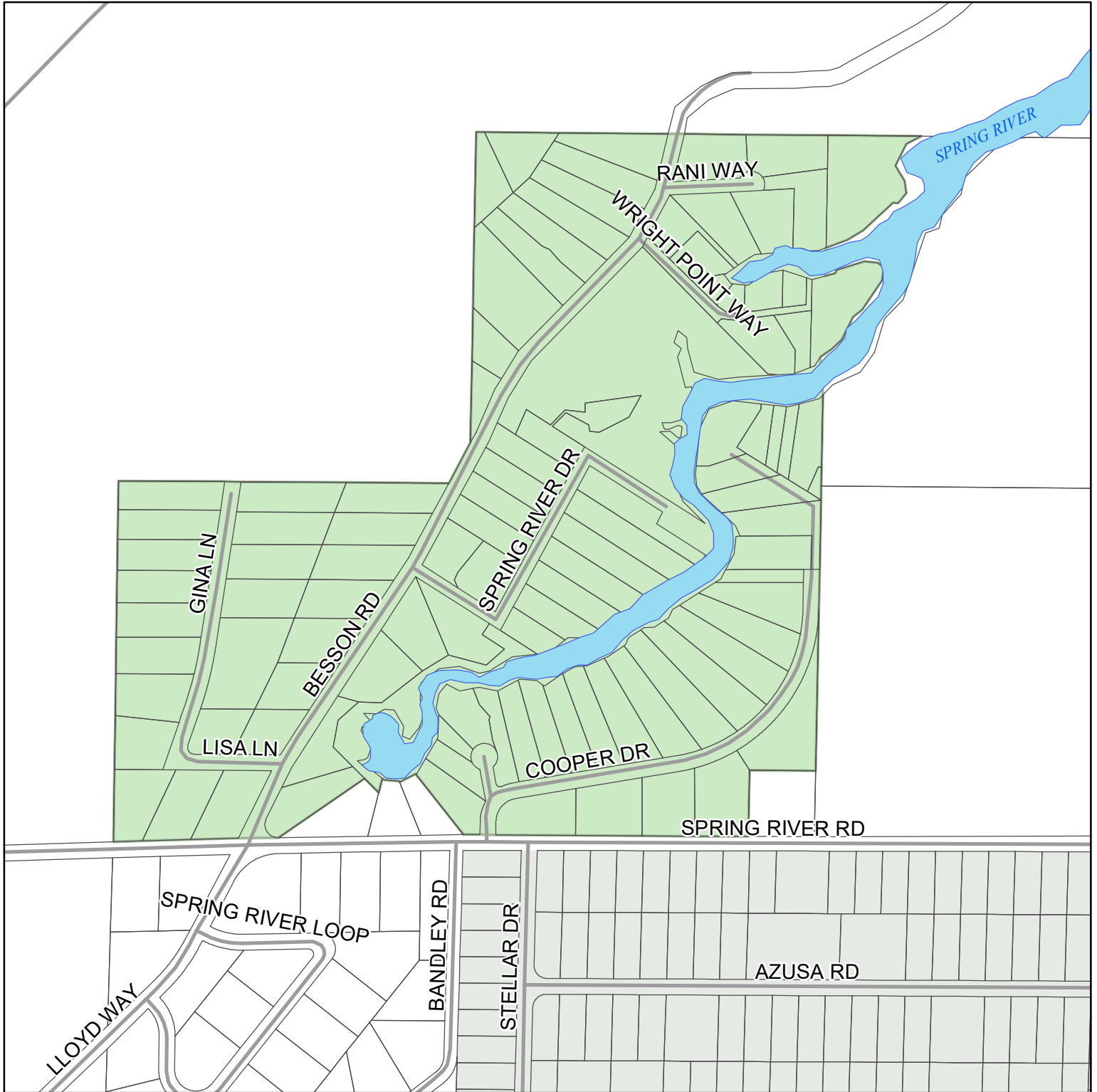


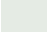

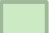


Spring River Special Road District




0 0.125 0.25 0.375 Miles

Printed: 1/03/2022

Legend

	Other SRD		Other roads
	Spring River Special Road District		Rivers
	Taxlots		



	John Anderson, GIS Analyst Phone: (541) 322-7102 Email: john.anderson@deschutes.org Address: 61150 SE 27th St Bend, OR 97702
	Road Department

The information on this map was derived from digital databases on Deschutes County's G.I.S. Care was taken in the creation of this map, but it is provided "as is". Deschutes County cannot accept any responsibility for errors, omissions, or positional accuracy in the digital data or the underlying records. There are no warranties, express or implied, including the warranty of merchantability or fitness for a particular purpose, accompanying this product. However, notification of any errors will be appreciated.