

HUNNELL ROAD: LOCO ROAD TO TUMALO ROAD IMPROVEMENT

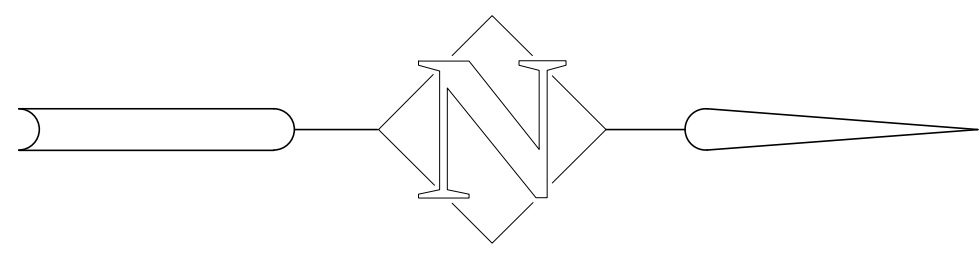
CONCEPT PLAN - SOUTH SECTION

MAY 24, 2021

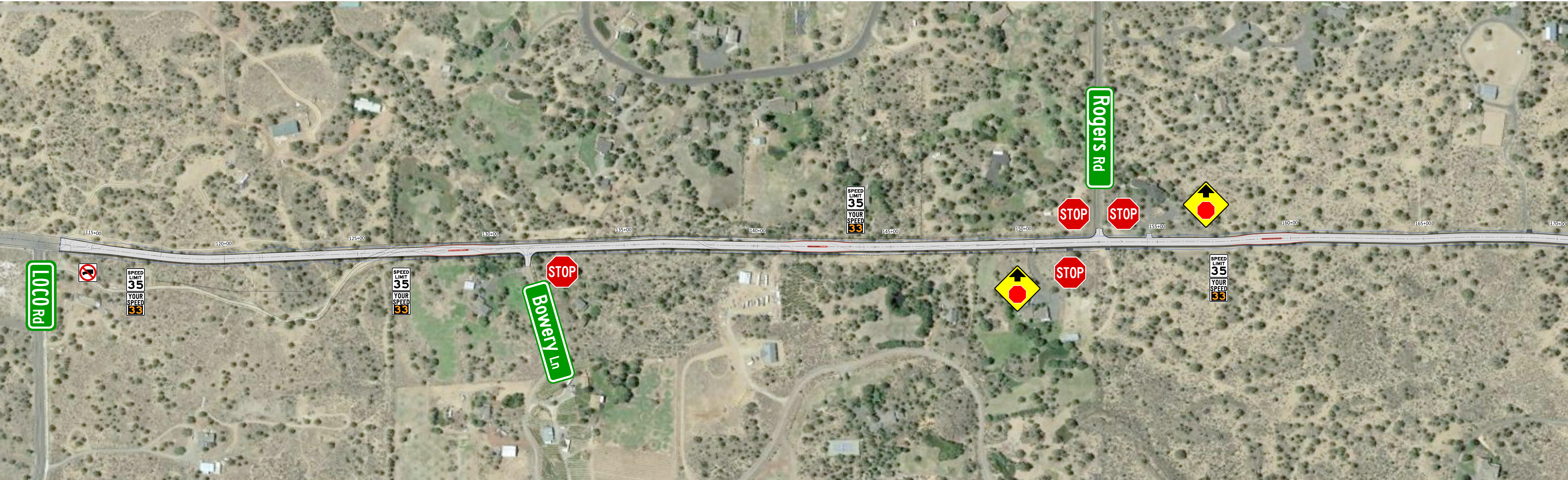
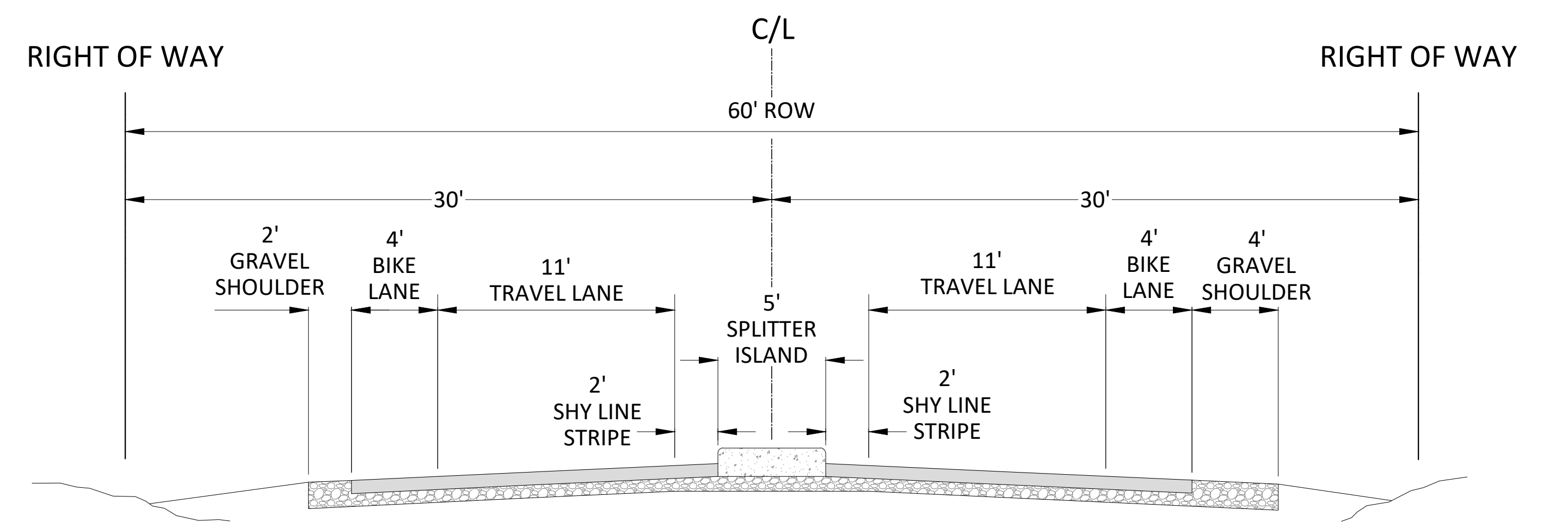
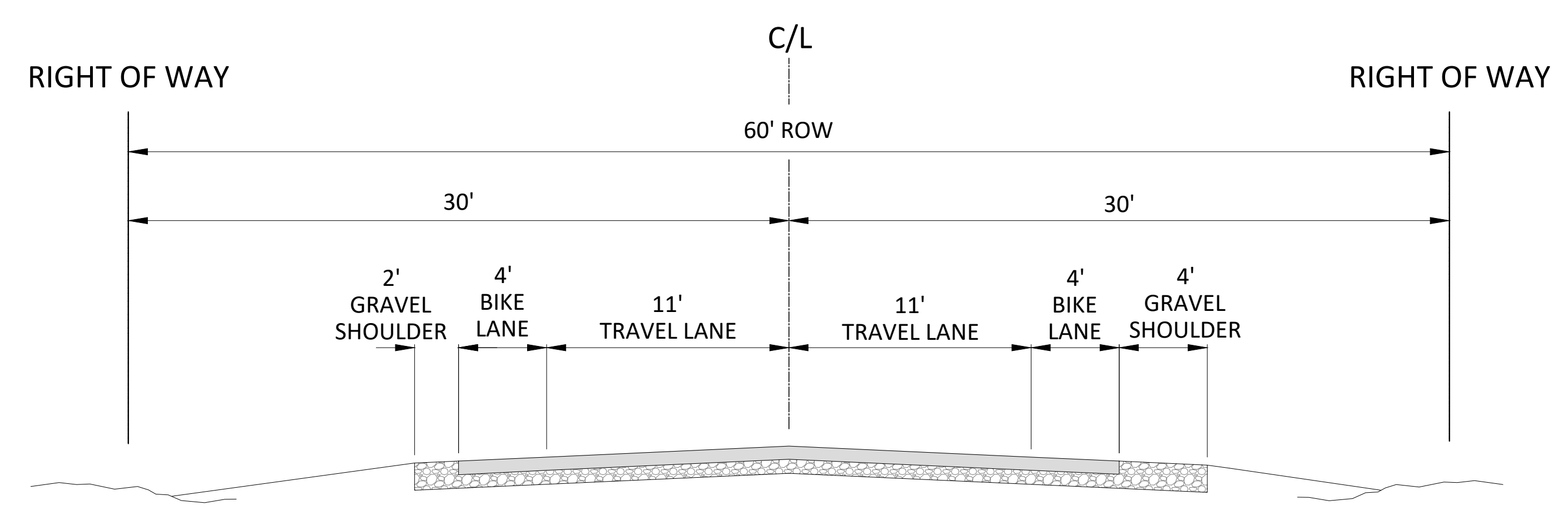


**ROAD
DEPARTMENT**

**Harper
Houf Peterson
Righellis Inc.**
ENGINEERS+PLANNERS
LANDSCAPE ARCHITECTS+SURVEYORS
250 NW Franklin Ave., Suite 404, Bend, OR 97703
phone: 541.318.1161 www.hhpr.com fax: 541.318.1141



SCALE: 1" = 50'



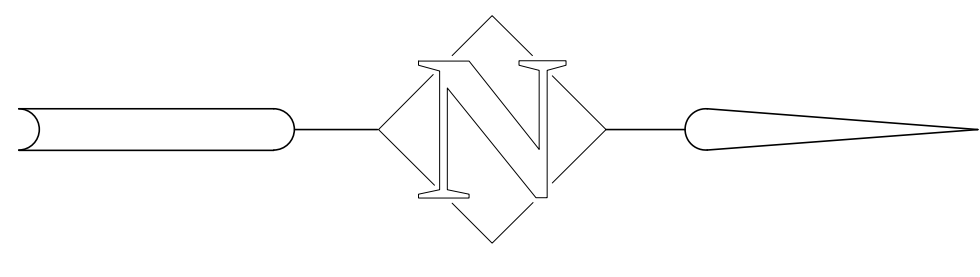
HUNNELL ROAD: LOCO ROAD TO TUMALO ROAD IMPROVEMENT

CONCEPT PLAN - MIDDLE SECTION MAY 24, 2021

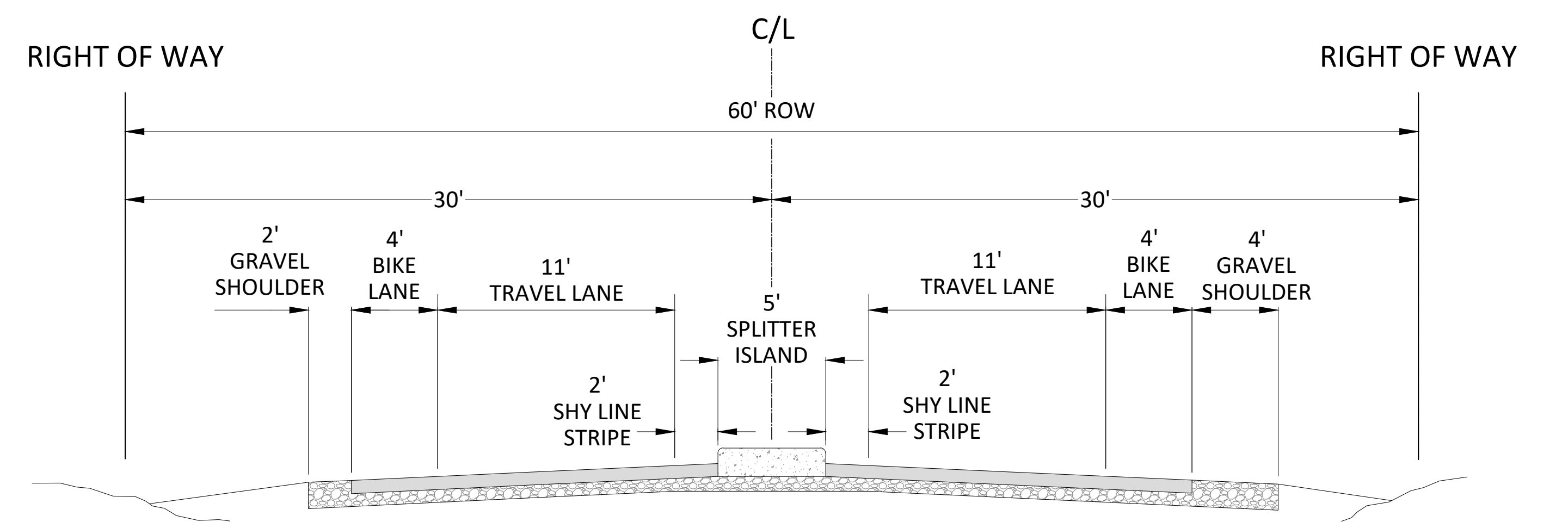
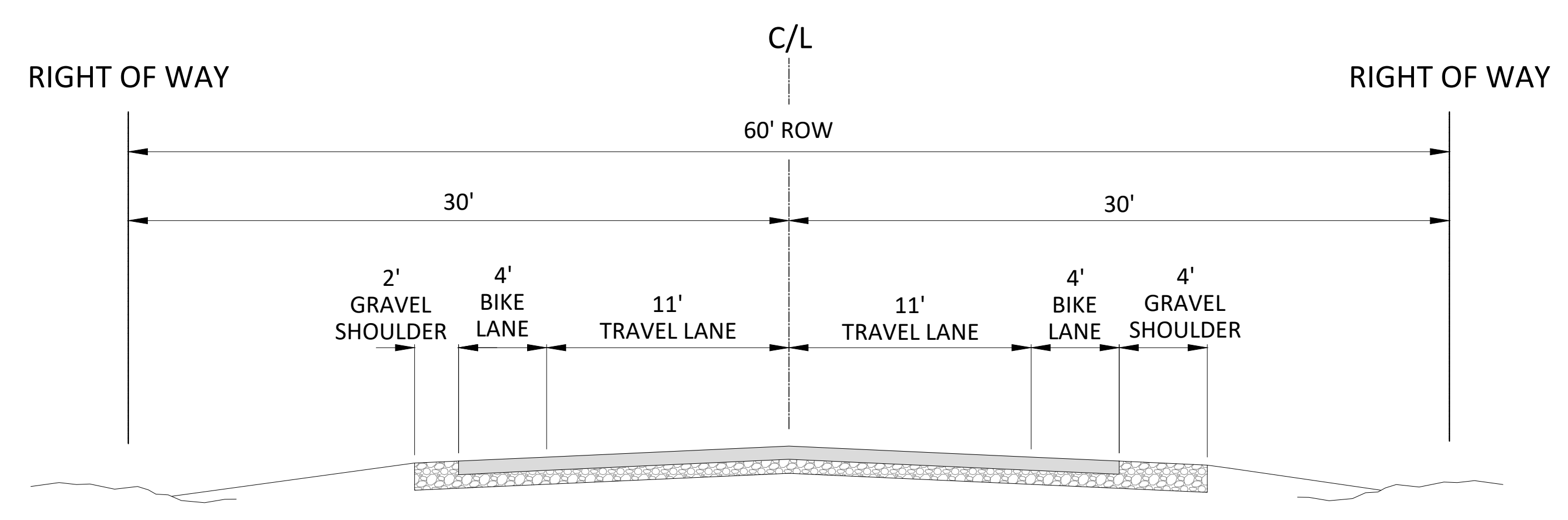


**ROAD
DEPARTMENT**

**Harper
Houf Peterson
Righellis Inc.**
ENGINEERS*PLANNERS
LANDSCAPE ARCHITECTS*SURVEYORS
250 NW Franklin Ave., Suite 404, Bend, OR 97703
phone: 541.318.1161 www.hhpr.com fax: 541.318.1141



SCALE: 1" = 50'



HUNNELL ROAD:

LOCO ROAD TO TUMALO ROAD IMPROVEMENT

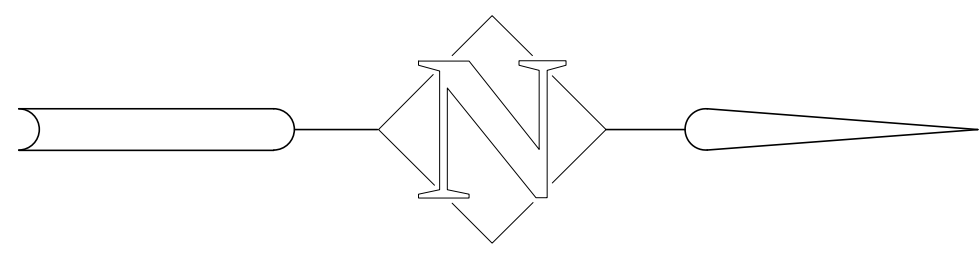
CONCEPT PLAN - NORTH SECTION

MAY 24, 2021

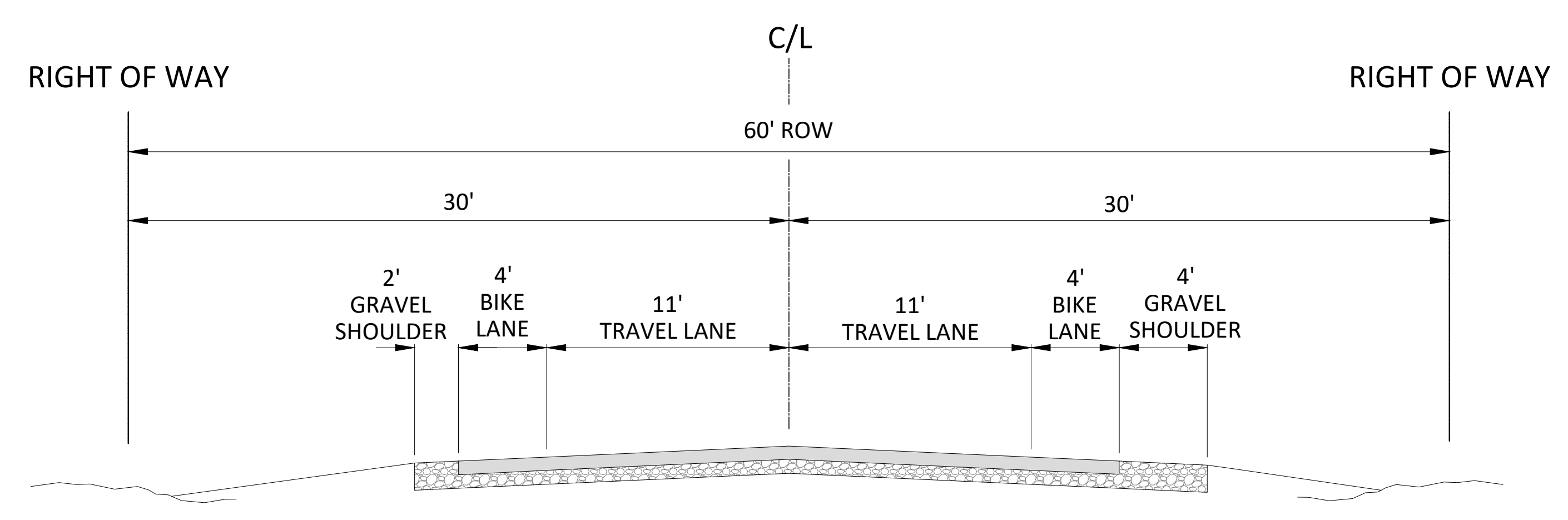


ROAD DEPARTMENT

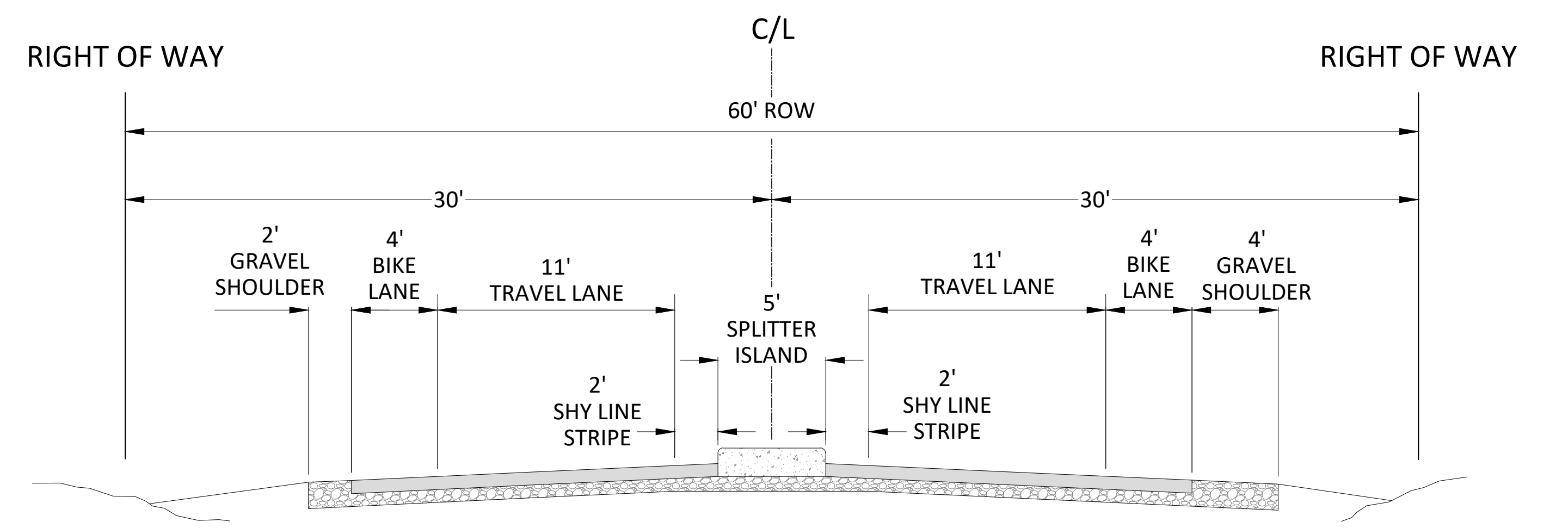
Harper Houf Peterson Righellis Inc.
ENGINEERS+PLANNERS
 LANDSCAPE ARCHITECTS+SURVEYORS
 250 NW Franklin Ave., Suite 404, Bend, OR 97703
 phone: 541.318.1161 www.hhpr.com fax: 541.318.1141



SCALE: 1" = 50'



TYPICAL ROADWAY SECTION
NOT TO SCALE



RAISED MEDIAN ROADWAY SECTION
NOT TO SCALE

