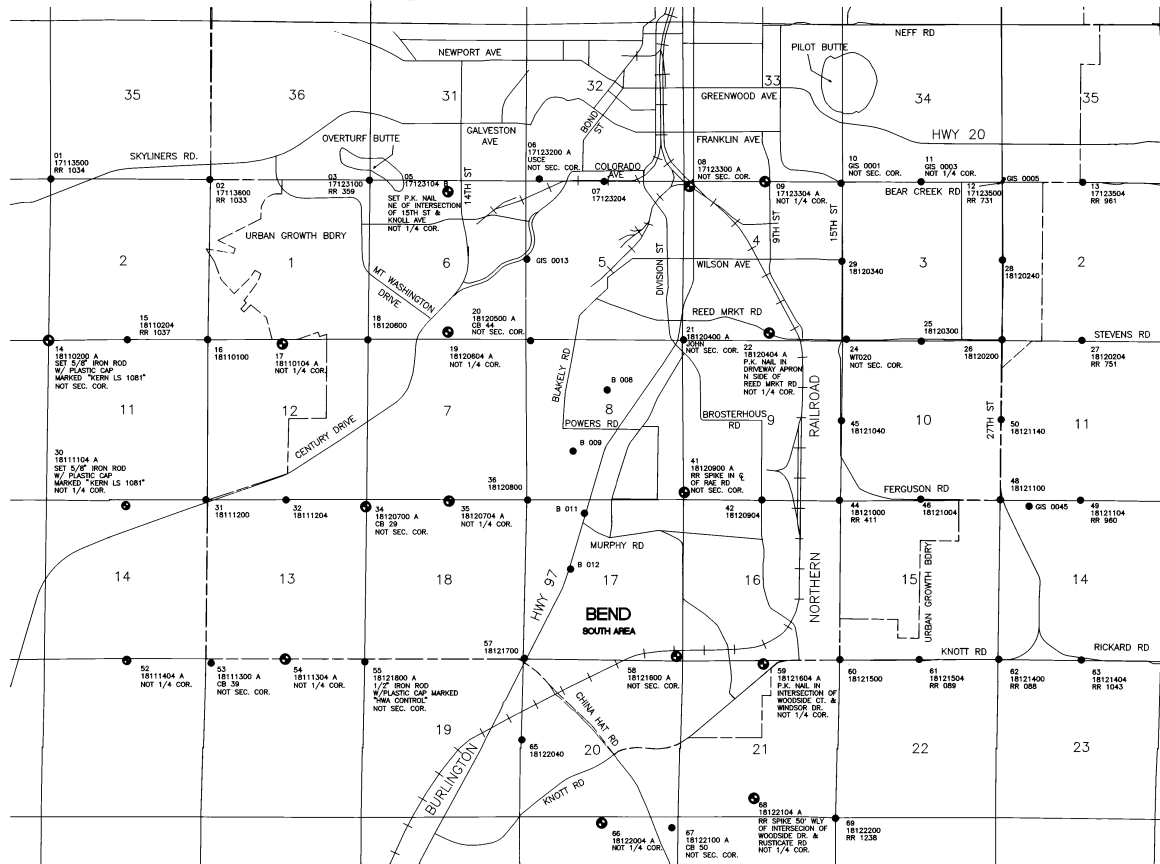


COUNTY GRID COORDINATE LIST

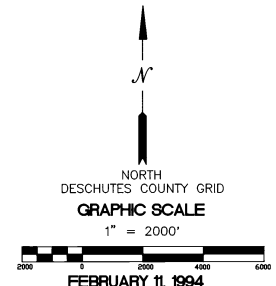
PT	NORTHING	EASTING	ELEVATION
05	382980.2864	3286794.2919	3655.12
08	383156.7355	3294928.1472	3655.06
09	383314.3913	3297331.9294	3689.24
14	378030.2079	3273648.0193	3880.30
17	377939.5232	3281319.4199	3772.42
19	378333.6742	3286791.6898	3695.29
22	378279.1113	3297438.7533	3724.91
25*	378096.6432	3302516.4049	3703.15
26*	378069.1835	3305170.0870	3696.08
28*	380711.6191	3305186.5840	3684.14
30	372592.3738	3276142.8738	3973.97
32	372779.9647	3281438.5366	3864.14
35	372739.4304	3286824.0365	3826.21
36	372771.9639	3289424.0941	3814.96
41	372790.0864	3294615.2182	3760.72
42	372771.3891	3297221.9222	3739.57
52	367461.9724	3276173.2466	3901.36
54	367502.6546	3281408.9029	3885.55
55	367409.1973	3284036.3223	3851.02
57	367489.1978	3289381.0812	3848.60
58	367581.0308	3294380.8263	3827.23
59	367329.2574	3297264.0282	3788.39
61	367471.9079	3302421.2950	3744.09
65	364848.1394	3289334.3544	3878.03
66	362064.4120	3291871.9438	3959.43
68	362879.2728	3296947.4575	3863.70

\* COORDINATES CALCULATED USING COUNTY DATA

R. 11 E. R. 12 E.



T. 17 S.  
T. 18 S.



FEBRUARY 11, 1994

SURVEYOR'S NARRATIVE

THE PURPOSE OF THIS SURVEY WAS TO ESTABLISH CONTROL FOR AERIAL MAPPING OF THE BEND URBAN GROWTH BOUNDARY TO AID IN THE DEVELOPMENT OF A SEWER AND WATER MASTER PLAN.

THE BASIS OF THIS MAP IS THE OREGON DEPARTMENT OF TRANSPORTATION MAP FOR THE BEND AREA OBTAINED ON DISK.

COORDINATES OF THE NEW POINTS ESTABLISHED WERE GENERATED USING THREE TRIMBLE 4000' SST RECEIVERS IN STATIC MODE. HORIZONTAL AND VERTICAL CONSTRAINTS INCLUDE GIS 0005, GIS 0045 AND GIS 0013. IN ADDITION, A VERTICAL CONSTRAINT WAS ESTABLISHED ON POINT NUMBER 55, BY DIFFERENTIAL LEVELING FROM STATION 18 12 18 00.

HORIZONTAL CONTROL WAS THE DESCHUTES COUNTY PLANE COORDINATE SYSTEM, A TRANSVERSE MERCATOR PROJECTION, DATUM IS NAD 83 (1991) IN INTERNATIONAL FEET. THE VERTICAL CONTROL DATUM IS IN INTERNATIONAL FEET, NGVD 29. SEE SEPARATE DESCRIPTION SHEETS FOR EACH POINT SHOWN HEREON, ON FILE WITH THE DESCHUTES COUNTY SURVEYOR.

MONUMENTS ESTABLISHED ARE 5/8" IRON RODS WITH ALUMINUM CAPS STAMPED "LS 1081", EXCEPT WHERE NOTED. SEE SEPARATE DESCRIPTION SHEETS ON FILE WITH THE DESCHUTES COUNTY SURVEYOR.

LEGEND

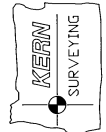
- MONUMENTS FOUND AS PER DESCHUTES COUNTY CORNER RESTORATION, CONTROL SURVEY OR CS RECORDS, ON FILE WITH THE DESCHUTES COUNTY SURVEYOR.
- SET 5/8" INCH IRON ROD WITH ALUMINUM CAP STAMPED "LS 1081", EXCEPT WHERE NOTED

RR DESCHUTES COUNTY CORNER RESTORATION NUMBER, DESCHUTES COUNTY SURVEYOR'S OFFICE

--- URBAN GROWTH BOUNDARY

CONTROL SURVEY  
 FOR THE CITY OF BEND  
 SOUTH AREA  
 LOCATED IN T. 17 S., T. 18 S., R. 11 E., R. 12 E., W.M.  
 DESCHUTES COUNTY, OREGON

PREPARED BY:  
 JEFF KEEN AND ASSOC. INC.  
 1000 BANK NEWPORT AVENUE  
 BEND, OREGON 97701  
 (503) 389-4736



FEB 11 1994  
 2-16-94  
 Jeff Keen

