

Central Oregon Monthly Norovirus Report

August 19th, 2025*

*Note: Norovirus Report released monthly



Norovirus Surveillance Summary

	7/27-8/2/25 (Week 31)	8/3-8/9/25 (Week 32)	8/10-8/16/25 (Week 33)	Cumulative 2024-2025 season*
Total number of Norovirus tests from reporting labs	28	26	29	1,569
Number of positive Norovirus tests (% +)	n/a	n/a	n/a	227(14.5%)

*As of current MMWR week; MMWR=Morbidity & Mortality Weekly Report (CDC); As of 5/21/25, 5 norovirus outbreaks have been reported in Central OR for 2024-25 season; n/a=not available [data <=5 suppressed to protect confidentiality]

Weekly # of reported Norovirus tests and proportion of positive tests in Central Oregon, 2024-2025



Note: While individual positive cases of norovirus are not reportable in Oregon by law, the NREVSS surveillance system provides norovirus testing data passively reported by local labs (described in the footnote below).

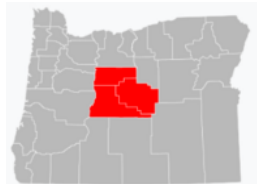


Image above from CreativeCommons

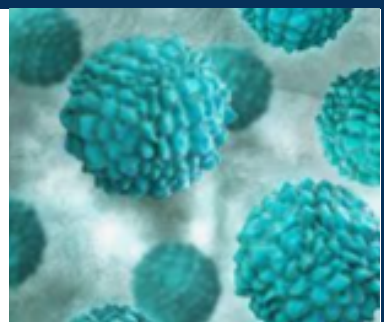
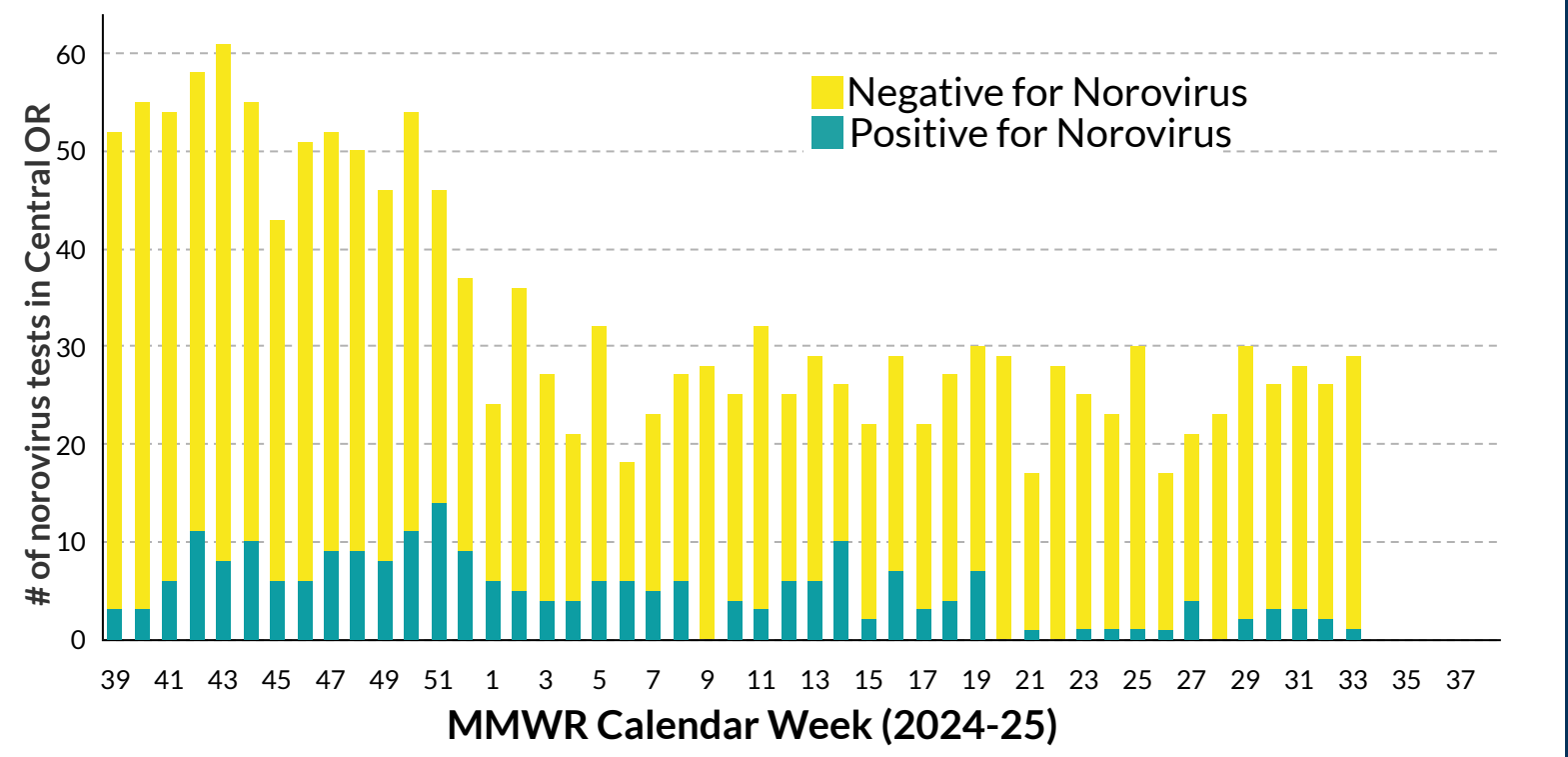


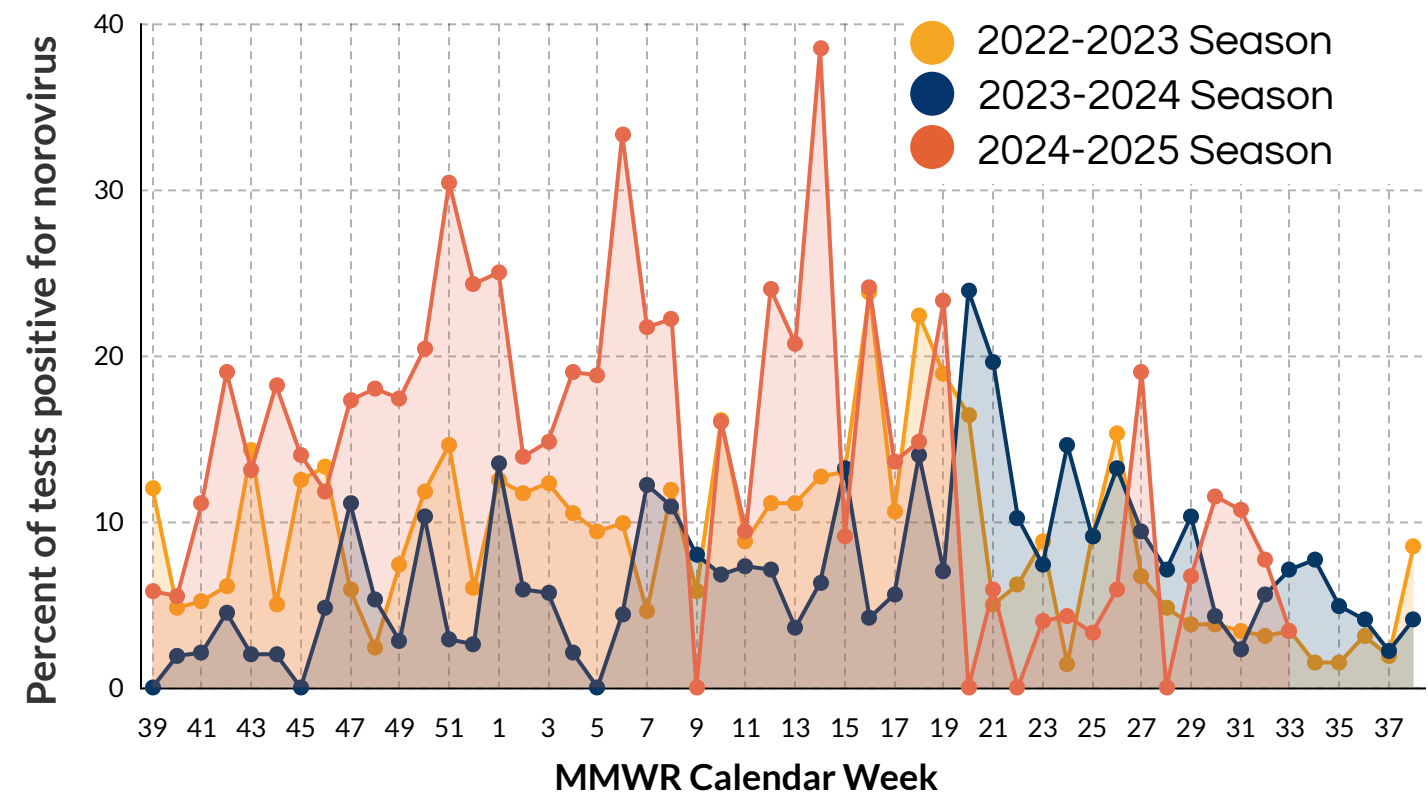
Image above from NFID



Data Source for Central OR lab reporting (graphic above & directly below): National Respiratory & Enteric Virus Surveillance System (NREVSS), a laboratory-based system that monitors temporal & geographic circulation patterns (occurring in a certain time/place) for an array of respiratory viruses. Participating laboratories (including a few in Central OR) report the total # of weekly aggregated tests; aggregated positive tests; along with specimen type/location & week of collection.

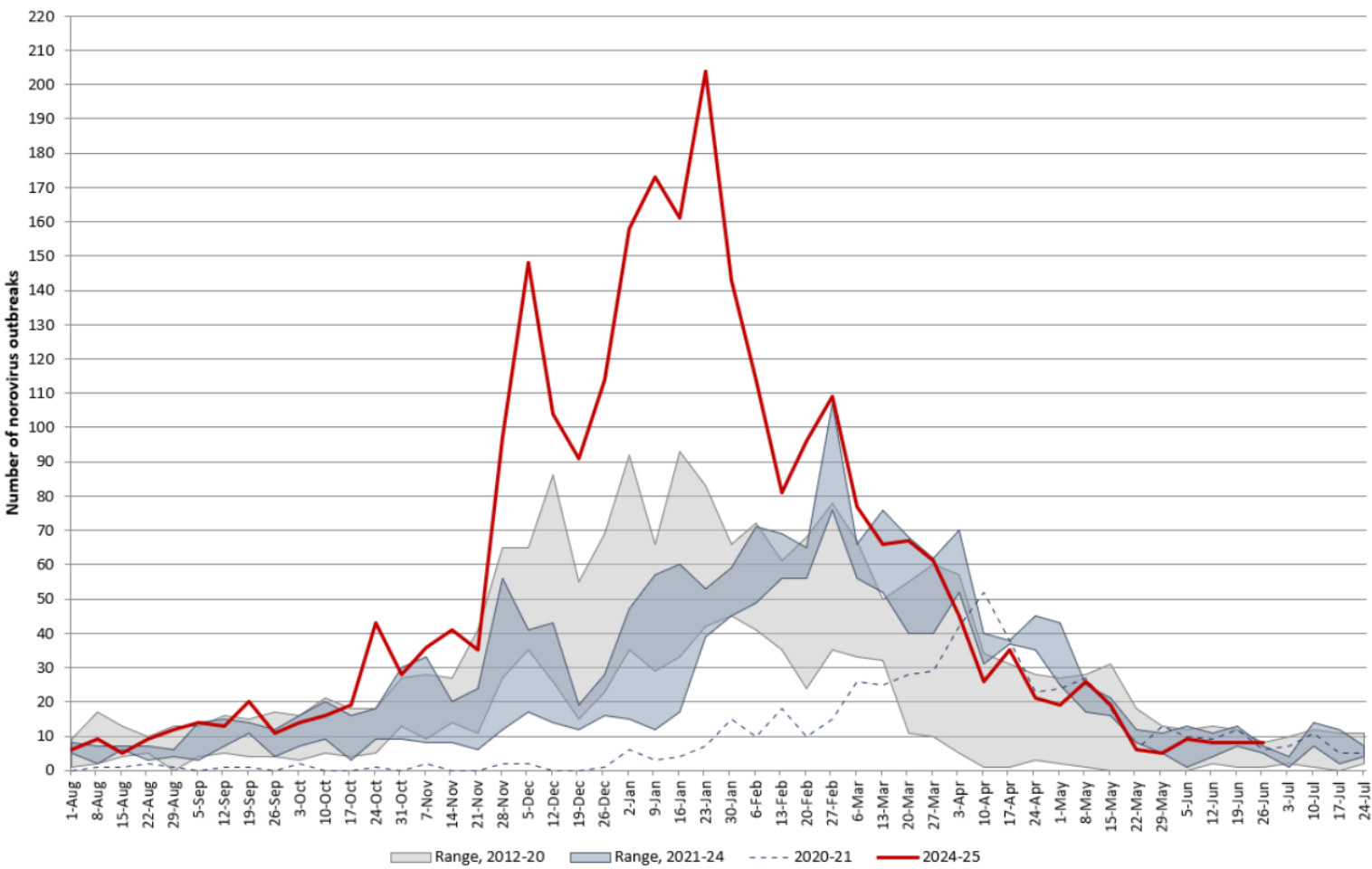
Definitions: MMWR=Morbidity & Mortality Weekly Report; MMWR weeks represent the week of the epidemiologic year for which the National Notifiable Diseases Surveillance System disease report is assigned by the reporting local or state health department for purposes of MMWR disease incidence reporting/publishing. From the above, starting week 39 (far left) corresponds to Sept 22nd-28th, 2024

Percent of reported Norovirus tests positive by MMWR week, 2022-2025



Note: For the 2024-25 season, calendar week 39=9/22-9/28/24; MMWR=Morbidity & Mortality Weekly Report (CDC)

Number of Suspected or Confirmed Norovirus Outbreaks Reported by NoroSTAT-Participating States Per Week, 2012-2025



This report is compiled by the Central Oregon Public Health Departments. Data are preliminary and might change as additional reports are received. Graphic directly above from [CDCs NoroSTAT Surveillance Network](#) [data current as of 6/23/25]. A point of note on **OR Norovirus Data**: While individual cases aren't reportable, outbreaks in specific settings (e.g. long-term care facilities & schools) are reportable. For additional detailed information, please see the following on '[Norovirus Outbreak Detection and Management](#)' released by OHA.