

# Central Oregon Weekly COVID-19 Report

September 9th, 2024\*

**\*Note:** COVID-19 Report released weekly during the **respiratory illness season** (generally from mid-Oct through May)




## COVID-19 Surveillance Summary

	8/11-8/17/24 (Week 33)	8/18-8/24/24 (Week 34)	8/25-8/31/24 (Week 35)	Cumulative 2023-2024 season*
Total number of COVID-19 tests from reporting labs	424	385	453	28,912
Number of positive COVID-19 tests (% +)	71(16.7%)	69(17.9%)	84(18.5%)	2,955(10.2%)

\*As of current MMWR week; MMWR=Morbidity & Mortality Weekly Report (CDC).

## Weekly # of reported COVID-19 tests and proportion of positive tests in Central Oregon, 2023-2024

 **Note:** Reporting for COVID-19 cases has changed with the end of the federal public health emergency. Therefore, reporting individual positive cases of COVID-19 is no longer required in the U.S. The current COVID-19 report uses the NREVSS surveillance system described in the footnote.

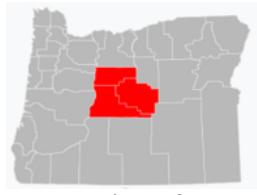


Image above from [CreativeCommons](#)

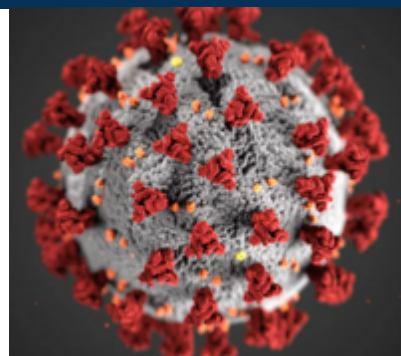
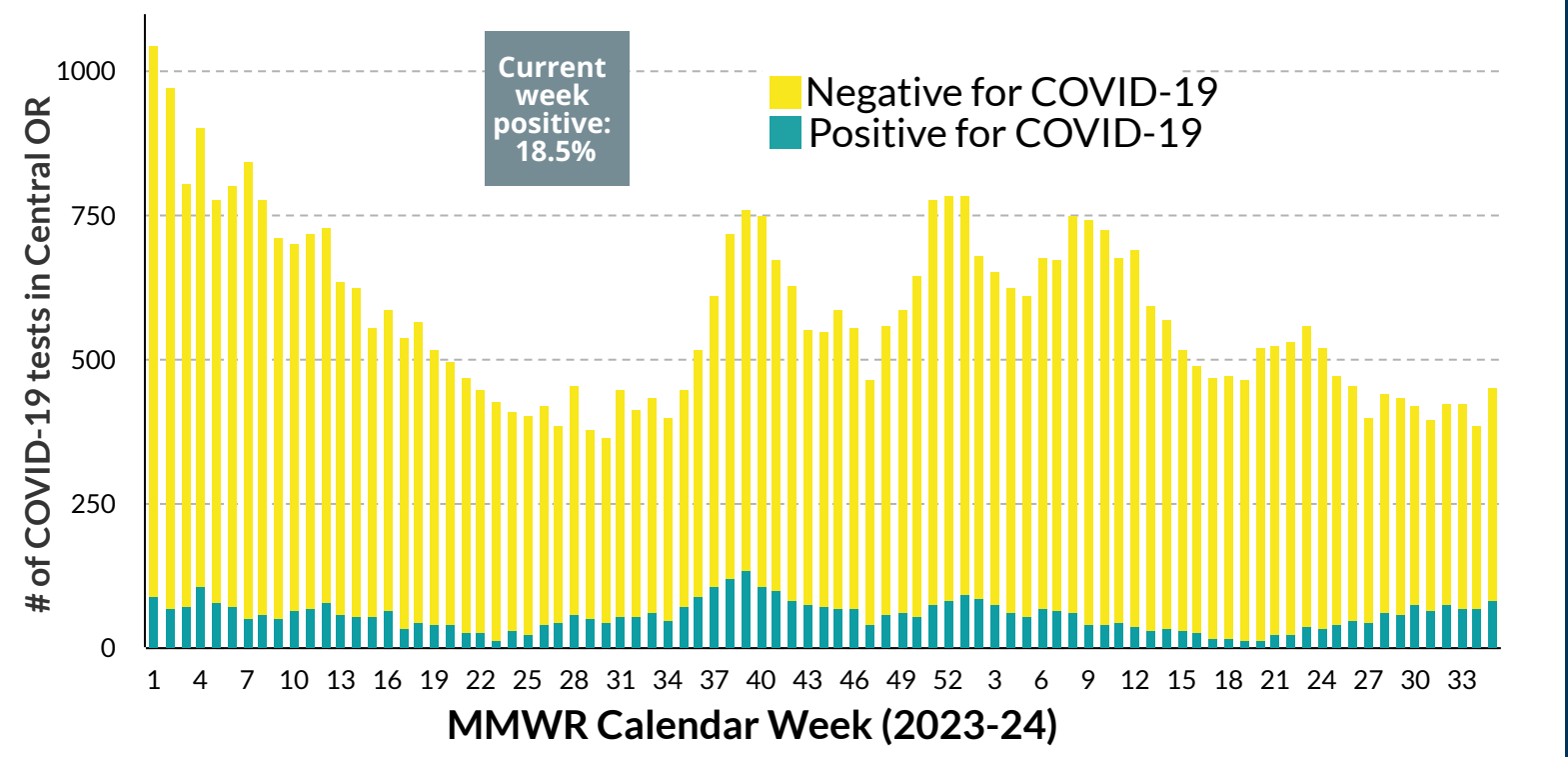


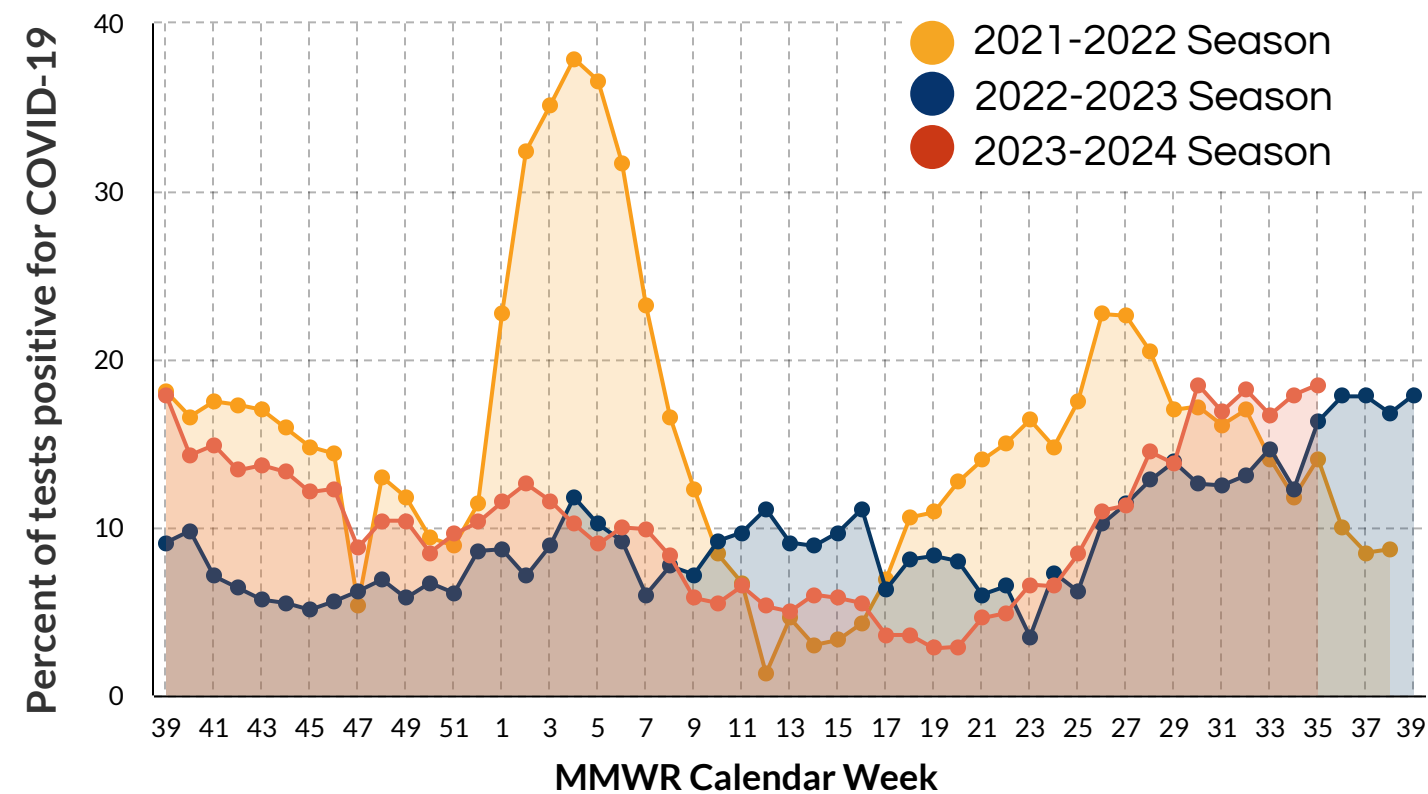
Image above from [CDC](#)



**Data Source for Central OR lab reporting (graphic above & directly below):** National Respiratory & Enteric Virus Surveillance System (NREVSS), a laboratory-based system that monitors temporal & geographic circulation patterns (occurring in a certain time/place) for an array of respiratory viruses. Participating laboratories (including a few in Central OR) report the total # of weekly aggregated tests; aggregated positive tests; along with specimen type/location & week of collection.

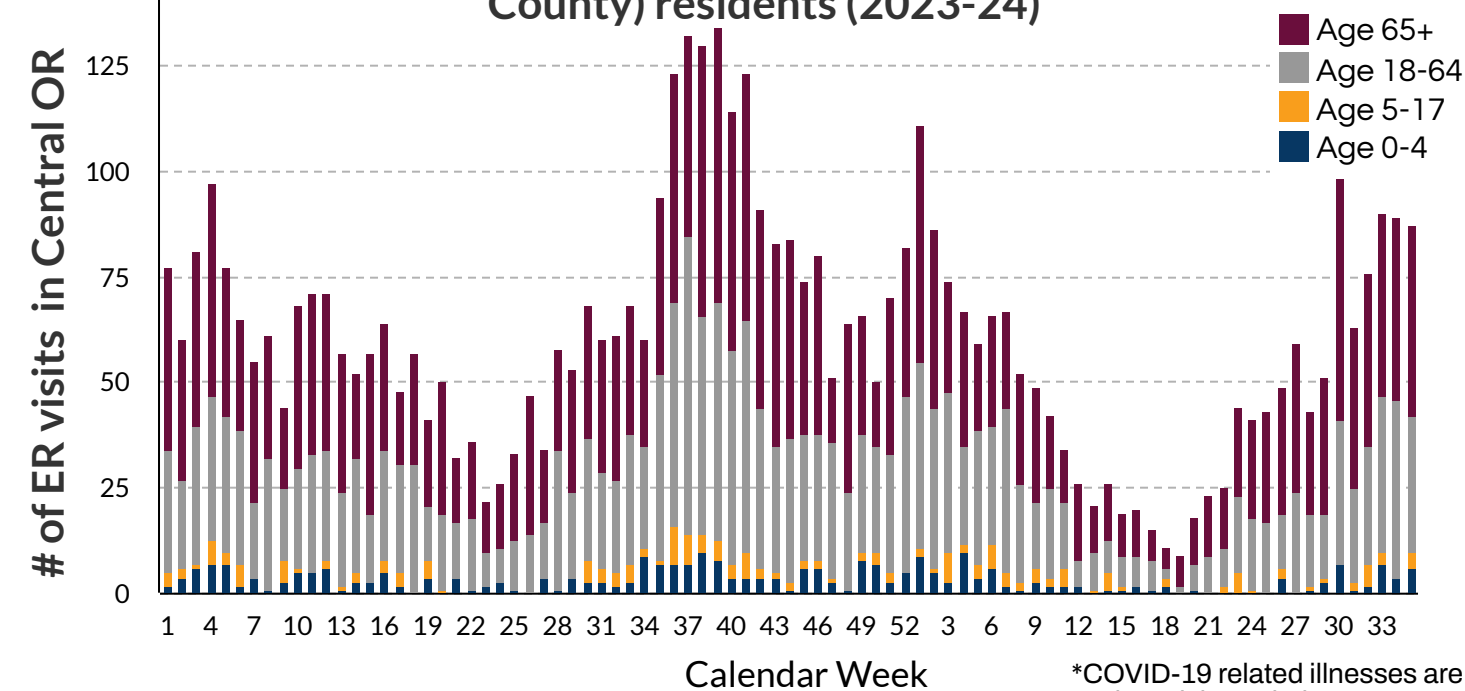
**Definitions:** MMWR=Morbidity & Mortality Weekly Report; MMWR weeks represent the week of the epidemiologic year for which the *National Notifiable Diseases Surveillance System* disease report is assigned by the reporting local or state health department for purposes of MMWR disease incidence reporting/publishing. From the above, starting week 1 (far left) corresponds to Jan 1st-7th, 2023

Percent of reported COVID-19 tests positive by MMWR week, 2021-2024



Note: For the 2023-24 season, calendar week 39=09/24-9/30/23; MMWR=Morbidity & Mortality Weekly Report (CDC)

Number of Emergency Room (ER) visits for COVID-19 like illness\* by age group and week among Central Oregon (Crook, Deschutes, and Jefferson County) residents (2023-24)



# of ER visits by county for COVID-19 like illness

	Last Week	This Week
Crook County residents	18	12
Deschutes County residents	61	66
Jefferson County residents	8	9

\*COVID-19 related illnesses are monitored through the ESSENCE (Oregon) syndromic surveillance database. This report includes visits by Crook, Deschutes, and Jefferson County residents to any ER across the state of Oregon.  
**Note:** \*\*\* indicates that data is not shown due to small numbers (counts <=5 not displayed to protect confidentiality)