

Deschutes County Health Services

COVID-19 Public Health Update

Emily Freeland
COVID-19 Response and Recovery
Supervisor

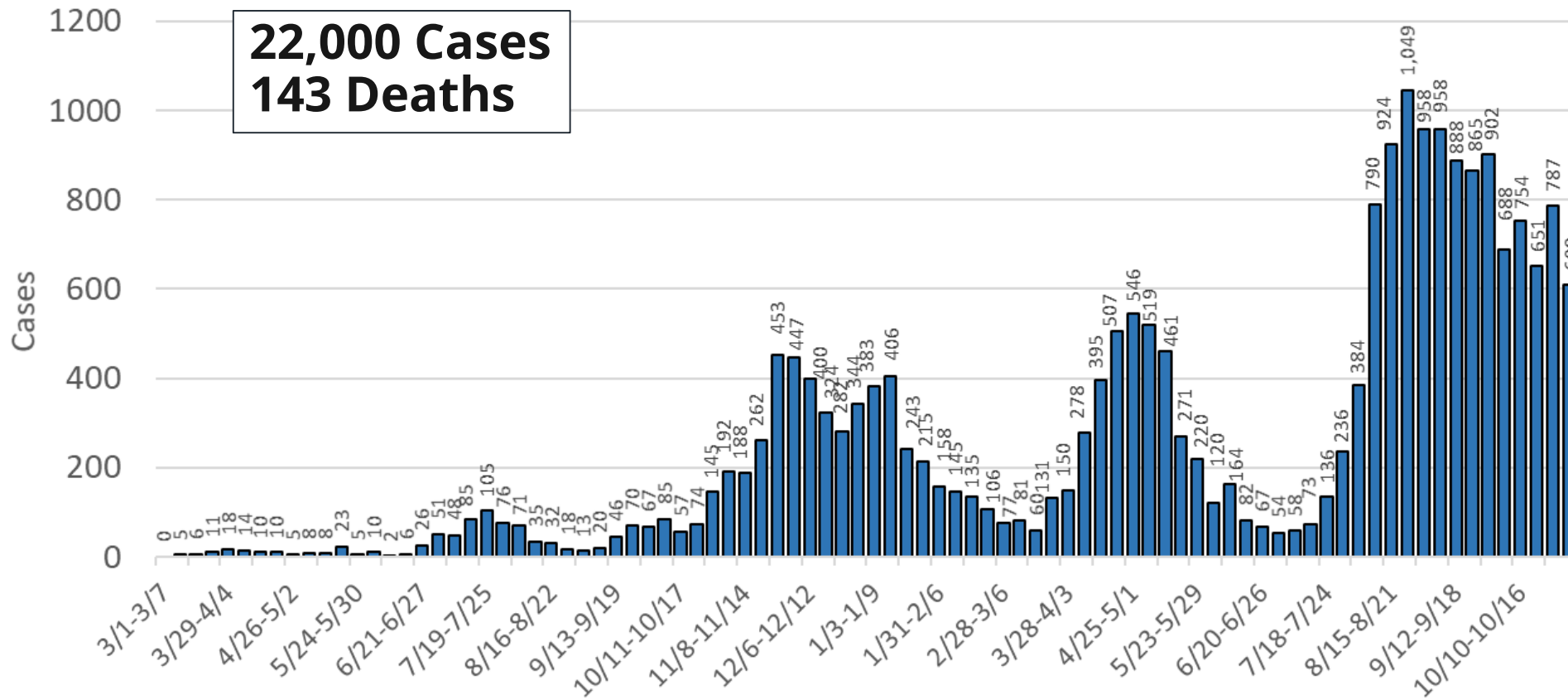
Rita Bacho
Public Health Program Manager

Michael Johnson, PhD
St. Charles Hospital



COVID-19 Case Counts: Vary at High Level

Deschutes County COVID-19 Cases by Week

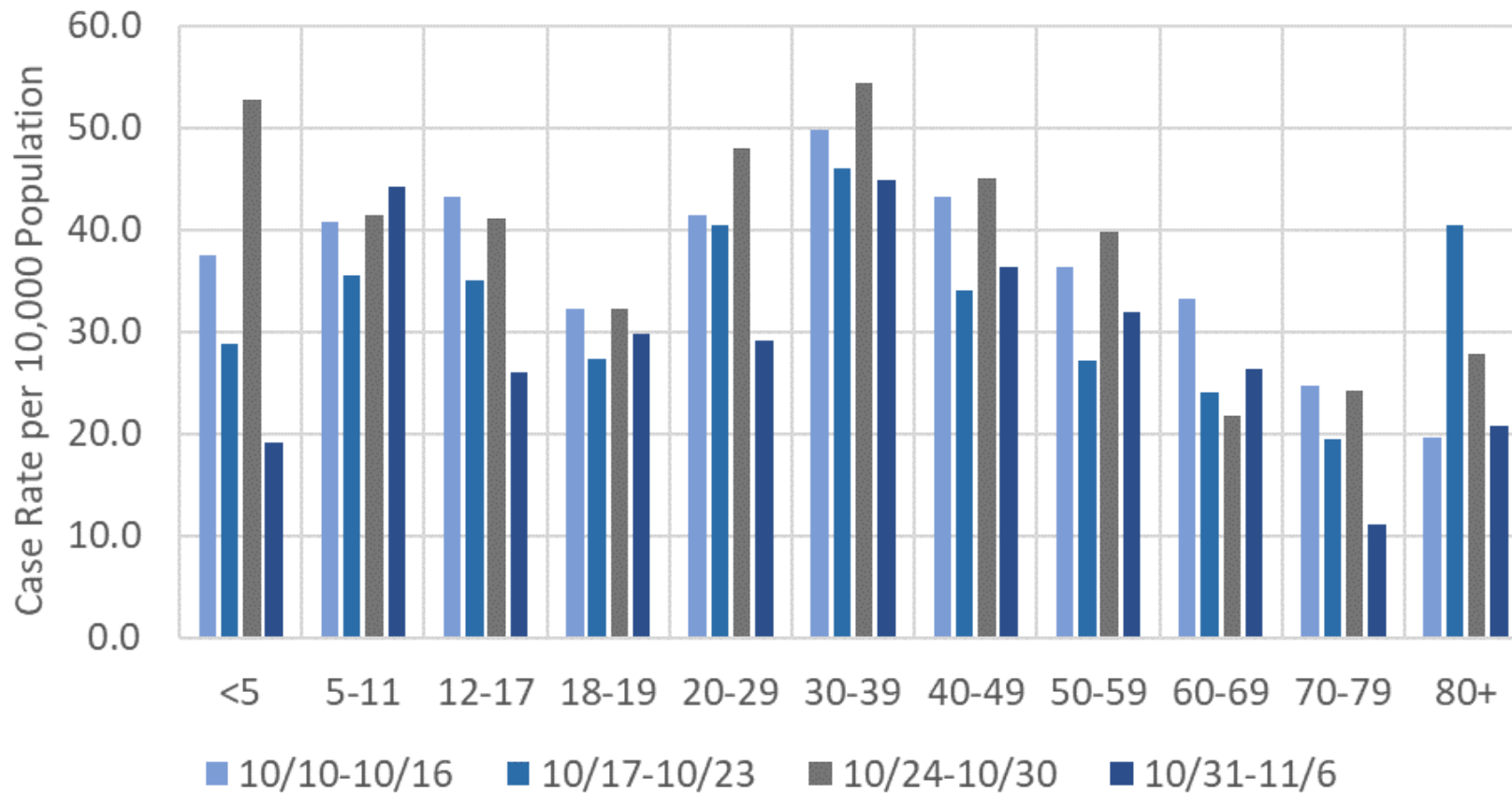


Note. Data are shown based on the date a case first became identified as a case. Data subject to change.



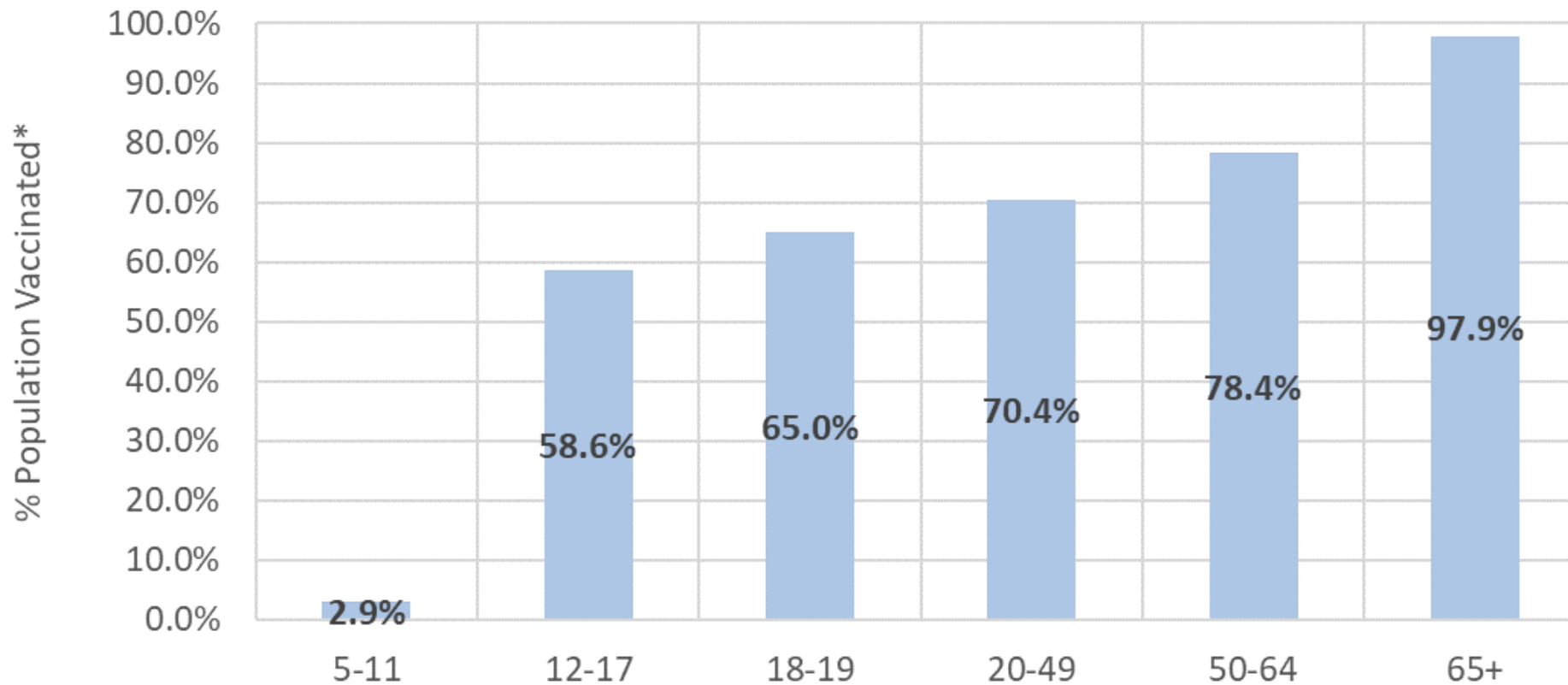
Case Rates Highest Among Young Adults

Deschutes County Weekly Case Rate by Age Group



COVID-19 Vaccination Rates Vary by Age Group

Deschutes County Vaccination Progress by Age Group

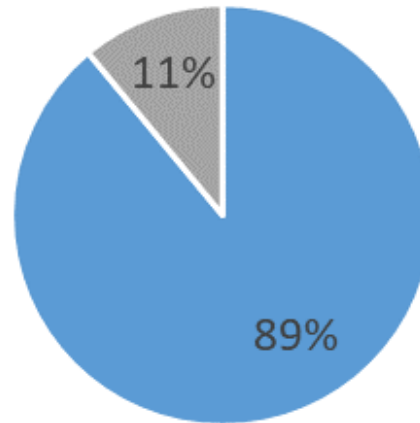


*Includes people with vaccination series in progress or fully vaccinated.



COVID-19 Case Follow Up Stable

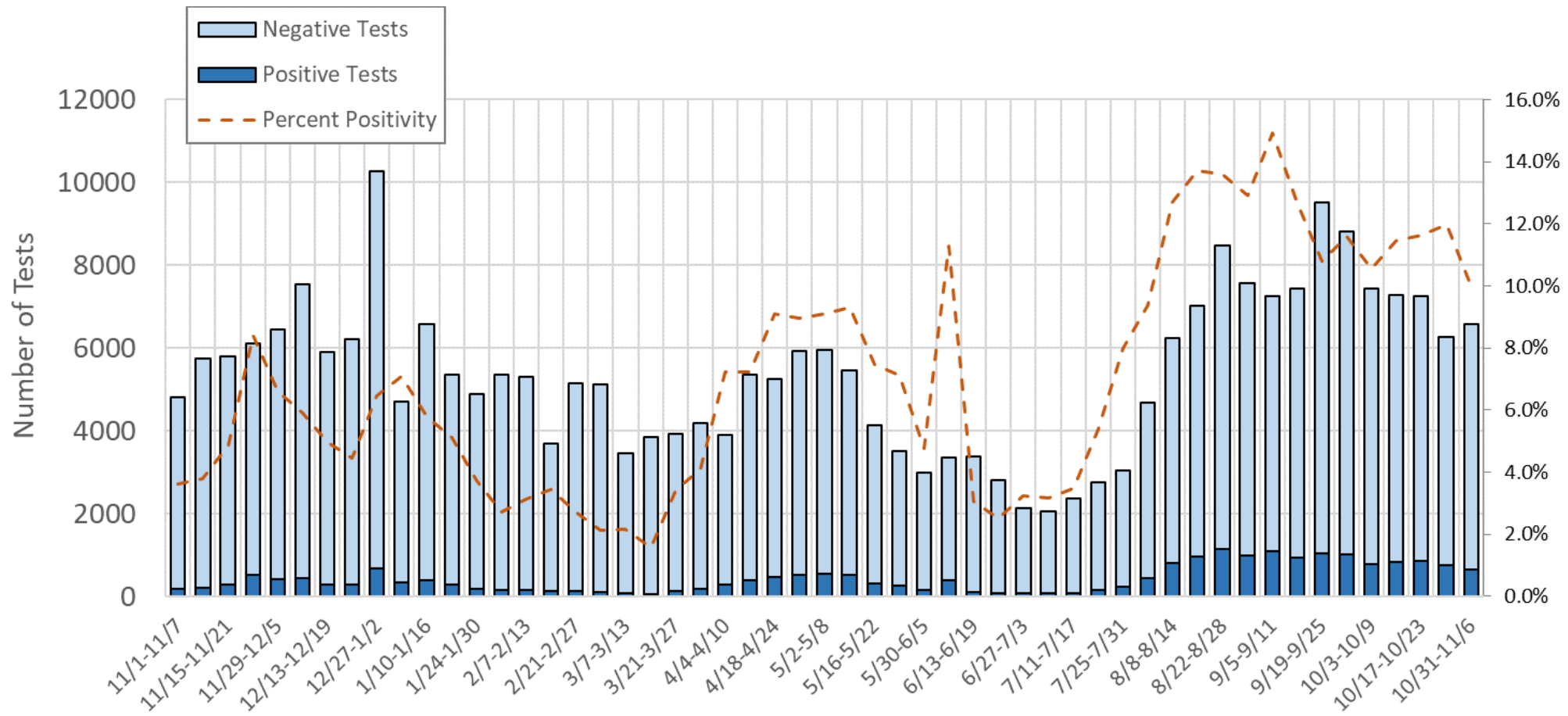
COVID-19 Case Investigation Time



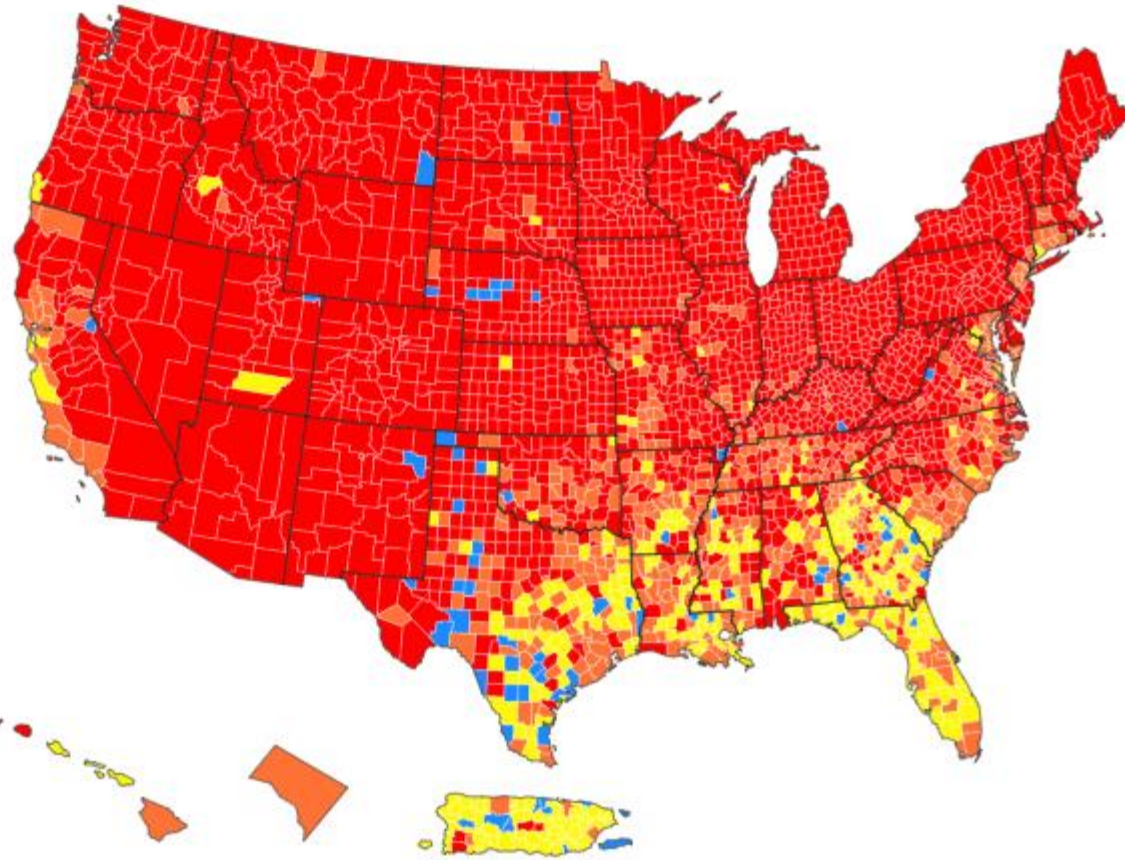
- Investigated within 24 hours of case report
- Not investigated within 24 hours of case report



COVID-19 Testing Volume Stable



COVID-19 Transmission – U.S.



Community Transmission in US by County

	Total	Percent	% Change
High	2248	69.77%	-3.91%
Substantial	556	17.26%	0.99%
Moderate	345	10.71%	2.67%
Low	70	2.17%	0.31%



No-cost Rapid PCR Testing

Rapid PCR testing available by appointment in Redmond

- Schedule an appointment at cur.tv/Redmond
- Open Thursdays through Mondays, noon to 7 p.m.
- Results in 1 to 2 hours
- No insurance required, if you have insurance it may be billed
- No out-of-pocket cost



Children 5-11 Now Eligible for COVID-19 Vaccines

The CDC recommends that all children age 5 and older get a COVID-19 vaccine.

Vaccination is the best way to protect our children, friends, and families from COVID-19



11/3/2021

Vaccines for children ages 5-11

Local pediatric clinics are offering the pediatric COVID-19 vaccine:

- Check your child's pediatrician's website to learn how to make an appointment
- Visit www.deschutes.org/kidsvaccines for vaccination options for kids
 - Thank you to Bend – La Pine Schools and many community partners for helping to create this dashboard of resources.





Give thanks, not covid

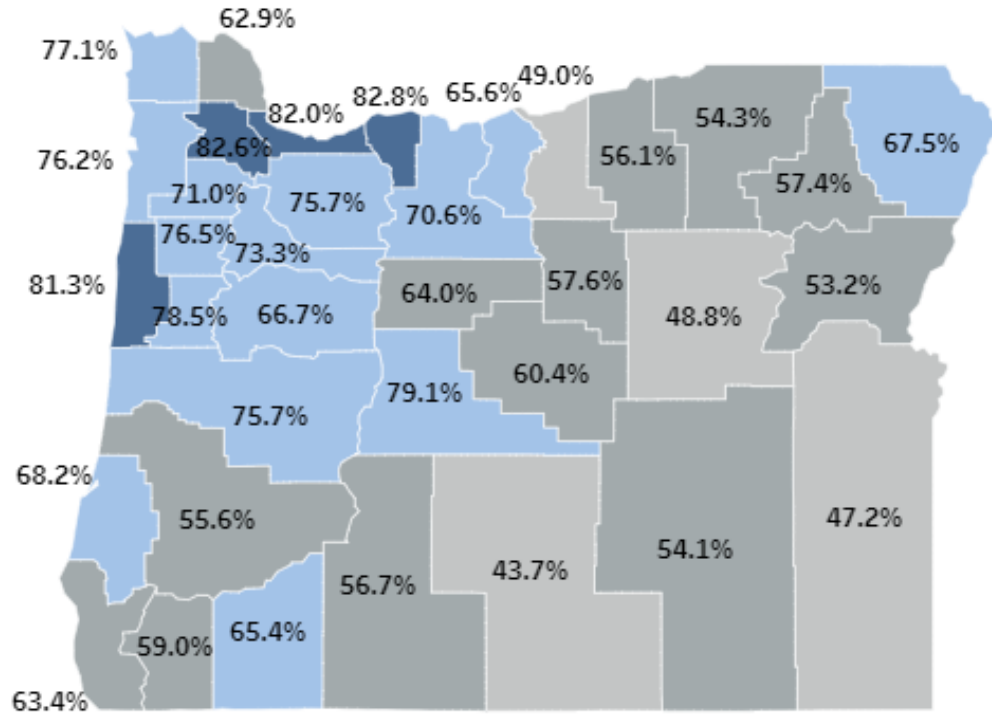
- Get your COVID-19 vaccine/booster
- Get your flu shot
- If you do not feel well or have symptoms, don't host or attend a gathering
- Wear a mask when you're around people you don't live with
- If you are considering traveling, check CDC's travel advisories



Medical System Update

Vaccination

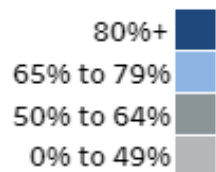
COVID-19 Vaccinations Among Highest in Oregon



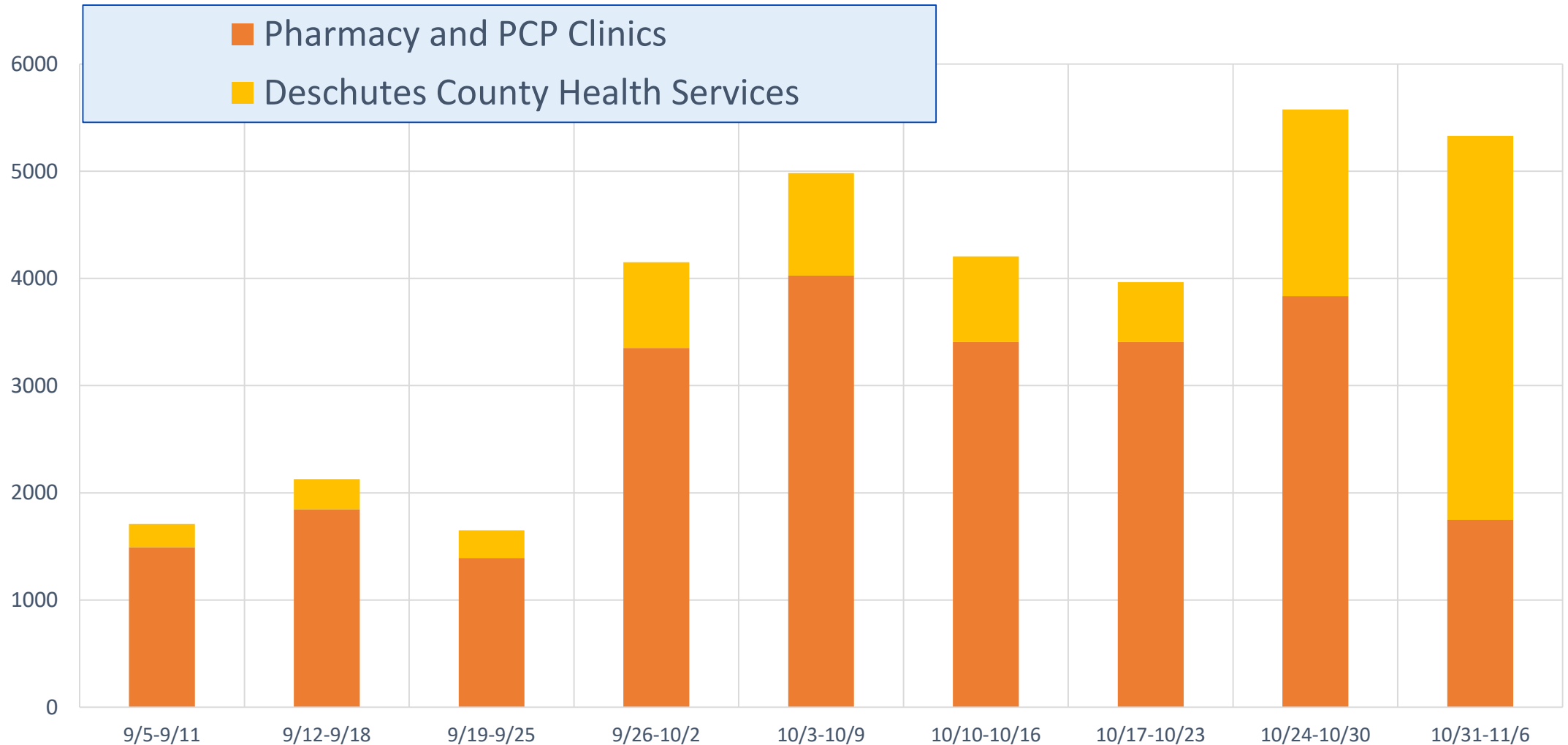
Population 18+ with series in progress	5%
Population 18+ fully vaccinated	74.2%
Population 18+ vaccinated*	79.1%
Population of all ages vaccinated*	66.8%

*Includes people with vaccination series in progress or fully vaccinated.

Legend



Weekly Vaccination Volume



COVID-19

Am I eligible for a booster shot?

Who?

If you received a Pfizer or Moderna series:

- > 65 years and older
- > Age 18+ who live in long-term care settings
- > Age 18+ who have underlying medical conditions
- > Age 18+ who work or live in high-risk settings

If you received a J&J vaccine:

- > Age 18+

When?

- > At least 6 months after Pfizer or Moderna
- > At least 2 months after J&J

Which booster shot do I get?

- > You may have a preference, but you can get any booster shot.



FIND OUT MORE AT [CDC.GOV](https://www.cdc.gov) & [VACCINES.GOV](https://www.vaccines.gov)



Is it COVID-19, flu, RSV or the common cold?

COVID-19 Onset after exposure: 2-14 days

Not everyone gets the same symptoms, or any symptoms.
Abdominal pain • Congestion • Coughing • Diarrhea • Fatigue
Fever (brief episodes) • Headache • Muscle or body aches •
Nausea or vomiting • New loss of taste or smell •
Shortness of breath • Sore throat

Flu Onset after exposure: 1-4 days

Unlike COVID-19, usually comes on very suddenly. Your child may feel perfectly fine one day and be sick the next.
Chills • Fatigue • Fever • Headache • Loss of appetite •
Nausea • Runny nose • Sore throat

RSV Onset after exposure: 4-6 days, in stages (not all at once)

Common cause of wheezing in kids under 2. In older kids, symptoms may not appear any different than the cold.
Coughing • Decreased appetite • Fever • Runny nose •
Sneezing • Wheezing

Common cold Onset after exposure: 2-3 days

Coughing • Runny or stuffy nose • Sneezing •
Sore throat • Watery eyes



Oregon
Health
Authority

I get it
so I won't get
**wiped out
by the flu**

#FIGHT FLU

Get your flu shot today.



where can I get a booster dose?

- Pharmacies: www.vaccines.gov
- Your primary care physician
- DCHS Vaccine Clinics

VACCINATION OPTIONS

- ✓ free
- ✓ no insurance required
- ✓ no id required

www.centraloregoncovidvaccine.com



St. Charles

Available to all aged 12+

Schedule!



Mosaic Medical

Available to all aged 12+

Schedule!



High Lakes

Available to all aged 12+

Schedule!



Central Oregon
Pediatric
Associates

Available to all aged 12+

Schedule!



Local
Pharmacies

Fred Meyer, Walgreens,
Safeway, Costco ...

Find one near you



Family Choice
Urgent Care

Available to all aged 12+

Schedule!



La Pine
Community
Health Center

Available to all aged 12+

Schedule!



Summit Health

Current patients only

Schedule!



Deschutes Co

Check out Deschutes
County's pop-up clinics!

Learn more!



Crook Co

Crook County is hosting
some great pop-up clinics.

Schedule!



Jefferson Co

What's available in
Jefferson County?

Schedule!



Vaccines.gov

Check out the CDC's
vaccine locator tool.

Search

Diversifying our reach/ access point

- La frontera/BIPOC
- Redmond Airport
- Vulnerable Populations (LTCFs/Homebound/AFH/ALF/MC)
 - 174 LTCF residents (11/1 – 11/7)
 - 43 LTCF staff (11/1 – 11/7)



Help with Questions



Frequently Asked Questions

www.deschutes.org/covid19vaccine

Email assistance

healthservices@deschutes.org

COVID-19 Vaccine Hotline

541-699-5109

Monday – Friday, 9 a.m. to 5 p.m.

