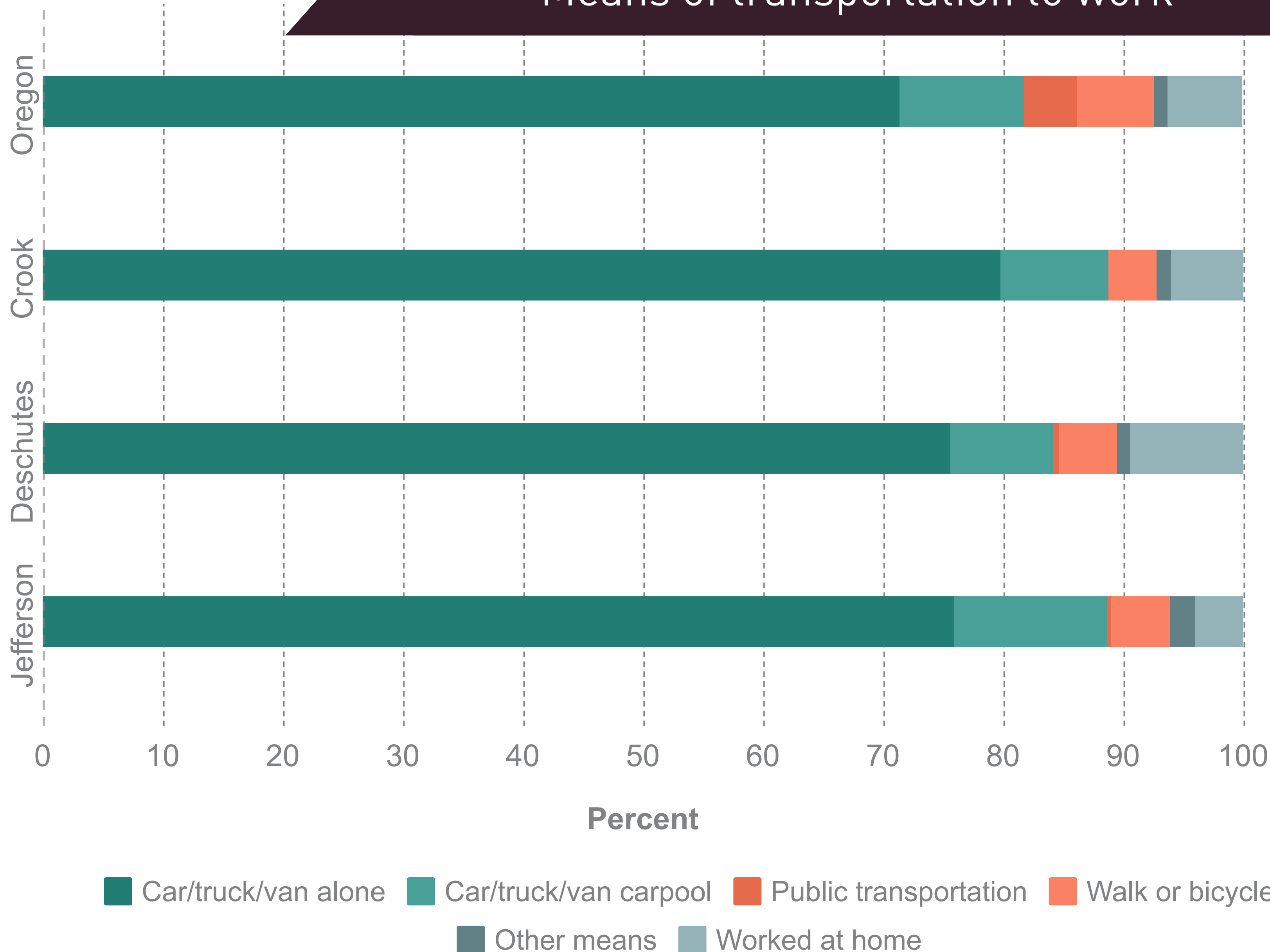


Environmental Health

Regional Health Assessment Midpoint Update 2017

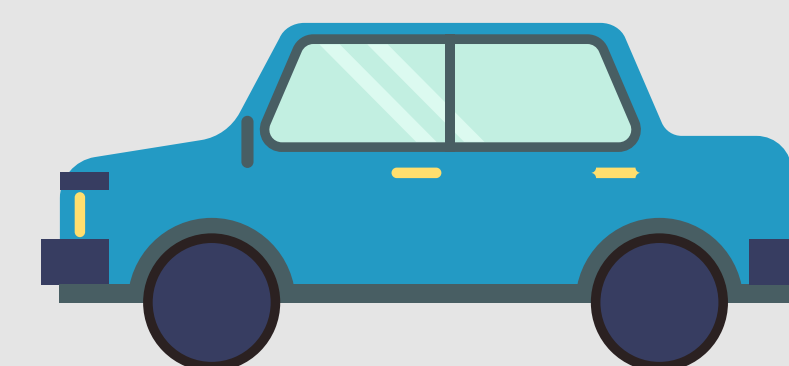
Means of transportation to work



Most Central Oregonians commute to work alone in a car, truck, or van.

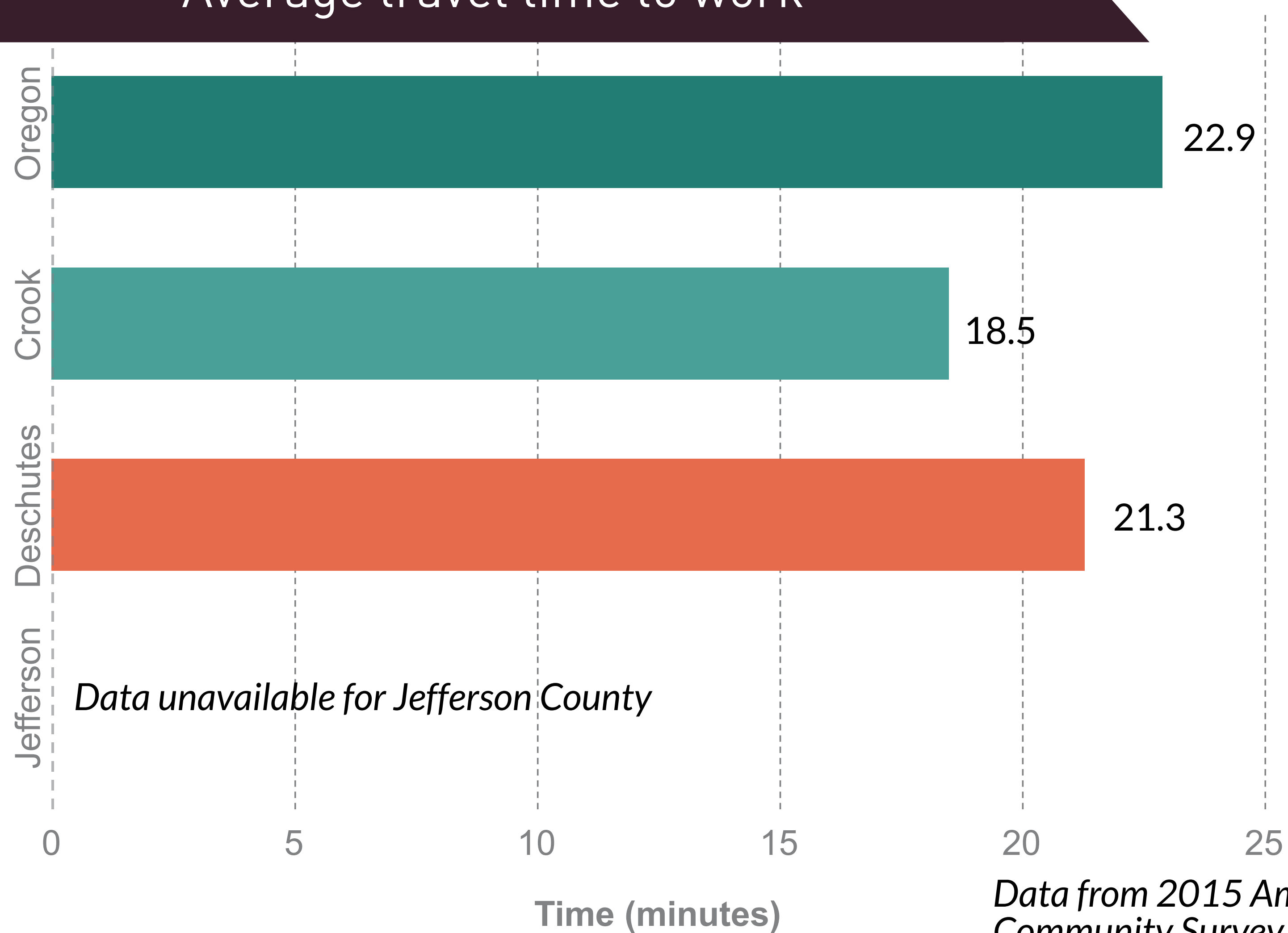
The percent who used active transportation (biking/walking) in each county was:

Crook: 4%
Deschutes: 4.9%
Jefferson: 4.9%



Data from 2015 American Community Survey

Average travel time to work

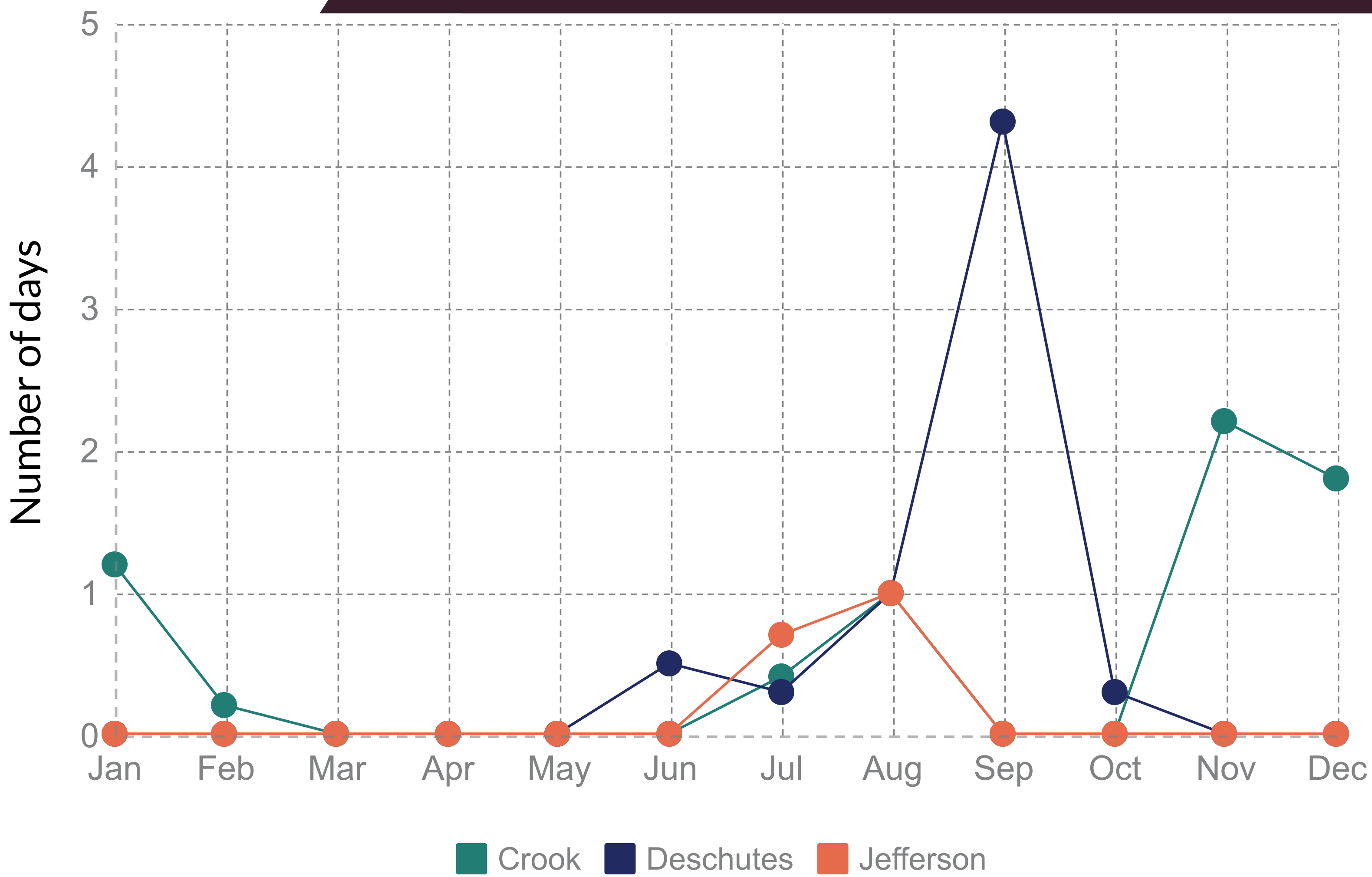


Data from 2015 American Community Survey



Residents of Crook and Deschutes Counties spend less time commuting to work than Oregonians as a whole.

Average unhealthy air quality days for individuals with asthma/lung diseases, by month

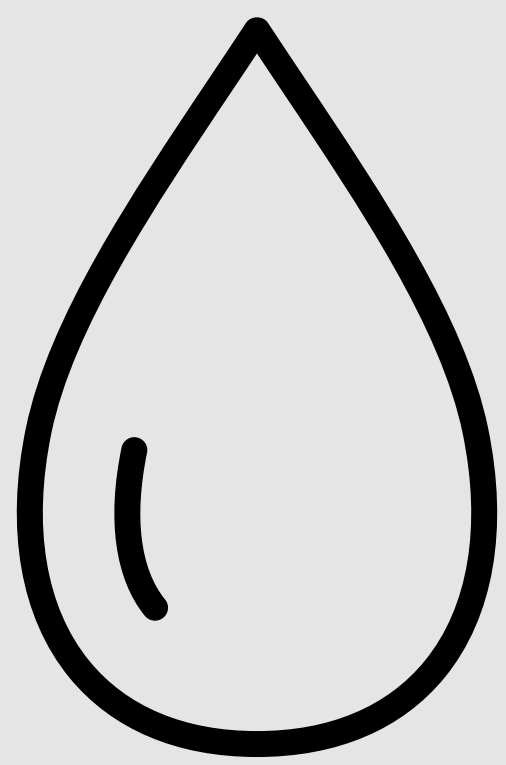


Late summer is the unhealthiest time of year for air quality in Deschutes and Jefferson Counties.

Winter is the unhealthiest time of year for air quality in Crook County.

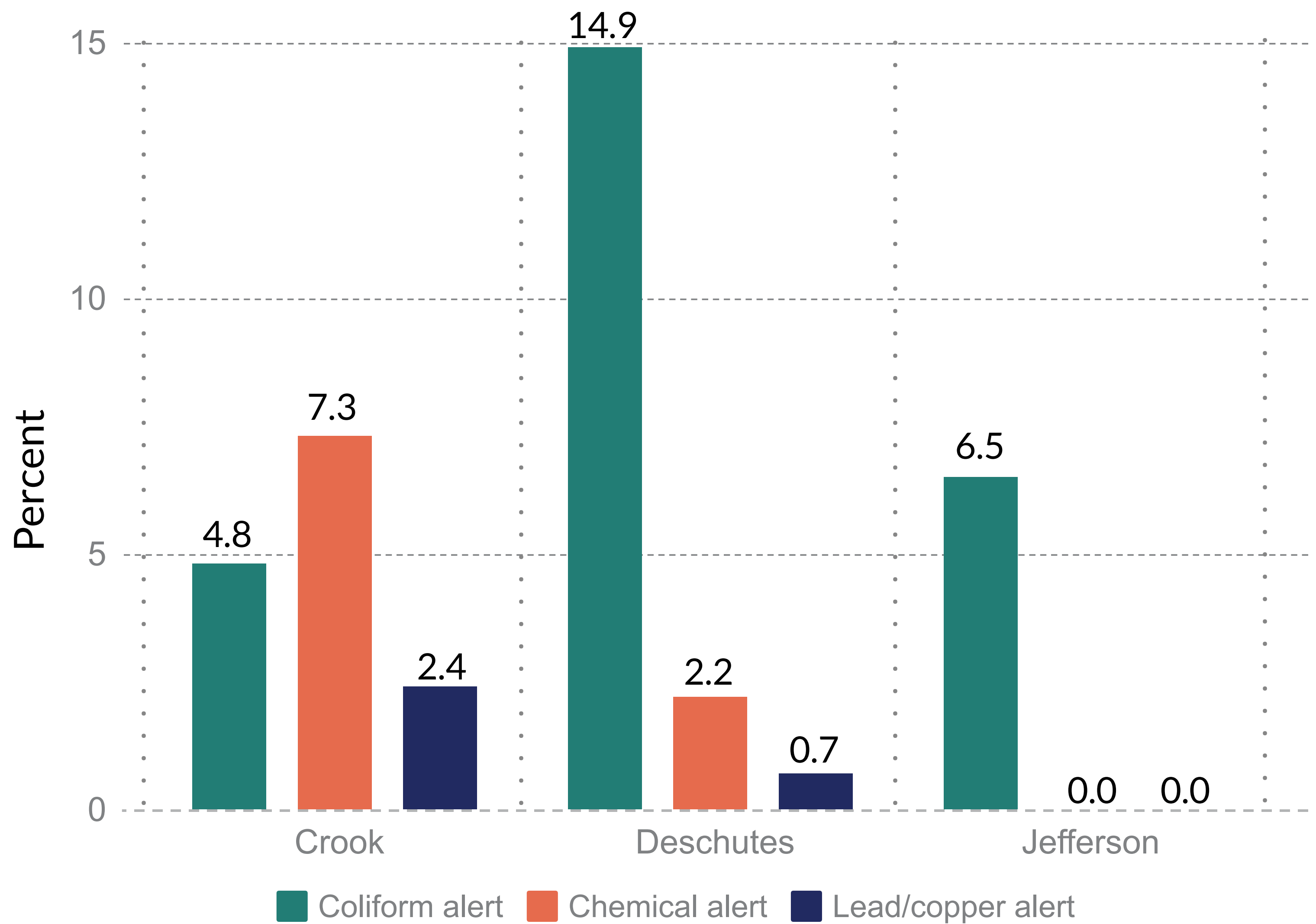
Data from airnow.gov, 2012-2016

Percent of all active drinking water systems that had an alert



Coliform alerts were the most common type of alerts seen in Deschutes and Jefferson Counties.

Chemical alerts were the most common type of alert seen in Crook County.



Data from Oregon Drinking Water Quality Database, 2016



deschutes.org/healthdata