

Community Development Department

Statewide Planning Goal 5

Part 5 of a 12-Part Series



Planning Commission, November 12, 2020

Invited Guest

- Matt Martin, Deschutes County Associate Planner



Part I

A. Water Resources

B. Wildlife Habitat

Planning Commission, October 22, 2020



Parts II & III

- A. Scenic and Open Spaces
- B. Cultural and Historic Resources
- C. Mineral and Aggregate Resources



Goal 5 – Natural Resources, Scenic and Historic Areas, and Open Spaces

- Goal emphasizes protecting natural resources and conserving scenic and historic areas and open spaces
- Local governments are required to develop inventories and adopt programs that will protect natural resources and conserve scenic, historic, and open space resources for present and future generation



Goal 5 – Natural Resources, Scenic and Historic Areas, and Open Spaces

- OAR 660, Division 23 (Goal 5 Requirements)
 - ❖ 660-023-0000: Purpose and Intent
 - ❖ 660-023-0010: Definitions
 - ❖ 660-023-0020: Standard and Specific Rules and Safe Harbors
 - ❖ 660-023-0030: Inventory Process
 - ❖ 660-023-0040: ESEE Decision Process
 - ❖ 660-023-0050: Programs to Achieve Goal 5
 - ❖ 660-023-0060: Notice and Land Owner Involvement
 - ❖ 660-023-0070: Buildable Lands Affected by Goal 5 Measures
 - ❖ 660-023-0080: Metro Regional Resources

Adopted by LCDC

OAR



Goal 5 – Natural Resources, Scenic and Historic Areas, and Open Spaces

- OAR 660, Division 23 (Goal 5 Requirements)

Adopted by LCDC

OAR

- ❖ 660-023-0090: Riparian Corridors
- ❖ 660-023-0100: Wetlands
- ❖ 660-023-0110: Wildlife Habitat
- ❖ 660-023-0115: Greater Sage Grouse
- ❖ 660-023-0120: Federal Wild and Scenic Rivers
- ❖ 660-023-0130: Oregon Scenic Waterways
- ❖ 660-023-0140: Groundwater Resources
- ❖ 660-023-0150: Approved Oregon Recreation Trails
- ❖ 660-023-0160: Natural Areas
- ❖ 660-023-0170: Wilderness Areas
- ❖ 660-023-0180: Mineral Resources
- ❖ 660-023-0190: Energy Sources
- ❖ 660-023-0200: Historic Resources
- ❖ 660-023-0220: Open Space
- ❖ 660-023-0230: Scenic Views and Sites
- ❖ 660-023-0240: Relationship of Goal 5 to Other Goals
- ❖ 660-023-0250: Applicability



Goal 5 – Natural Resources, Scenic and Historic Areas, and Open Spaces

- OAR 660, Division 23 (Goal 5 Requirements)

Adopted by LCDC

OAR

- ❖ 660-023-0090: Riparian Corridors
- ❖ 660-023-0100: Wetlands
- ❖ 660-023-0110: Wildlife Habitat
- ❖ 660-023-0115: Greater Sage Grouse
- ❖ 660-023-0120: Federal Wild and Scenic Rivers
- ❖ 660-023-0130: Oregon Scenic Waterways
- ❖ 660-023-0140: Groundwater Resources
- ❖ 660-023-0150: Approved Oregon Recreation Trails
- ❖ 660-023-0160: Natural Areas
- ❖ 660-023-0170: Wilderness Areas
- ❖ 660-023-0180: Mineral Resources
- ❖ 660-023-0190: Energy Sources
- ❖ 660-023-0200: Historic Resources
- ❖ 660-023-0220: Open Space
- ❖ 660-023-0230: Scenic Views and Sites
- ❖ 660-023-0240: Relationship of Goal 5 to Other Goals
- ❖ 660-023-0250: Applicability



Scenic and Open Spaces



Comprehensive Plan – Section 2.7

- Section 2.7, Open Spaces, Scenic Views and Sites recognizes:
 - ❖ 76% of Deschutes County (~1.4 million acres) is owned by the federal government
 - ❖ Open spaces are protected through an Open Space and Conservation map designation and zoning district
 - ❖ Scenic view protection is implemented through a Landscape Management Combining Zone



Comprehensive Plan – Section 2.7

- Section 2.7, Open Space Goals and Policies emphasize:
 - ❖ Supporting efforts to identify and protect significant open spaces and visually important areas including between Bend and Redmond
 - ❖ Encouraging a variety of approaches that protect significant open spaces and scenic views and sites
 - ❖ Reviewing County Code and revise as needed to protect open space and scenic views and sites



Open Space and Conservation Zone

❖ ~70,000 acres in Deschutes County's Open Space and Conservation Zone

❖ 128 properties

-State Parks

-Irrigation Districts

-Newberry Nat'l Monument

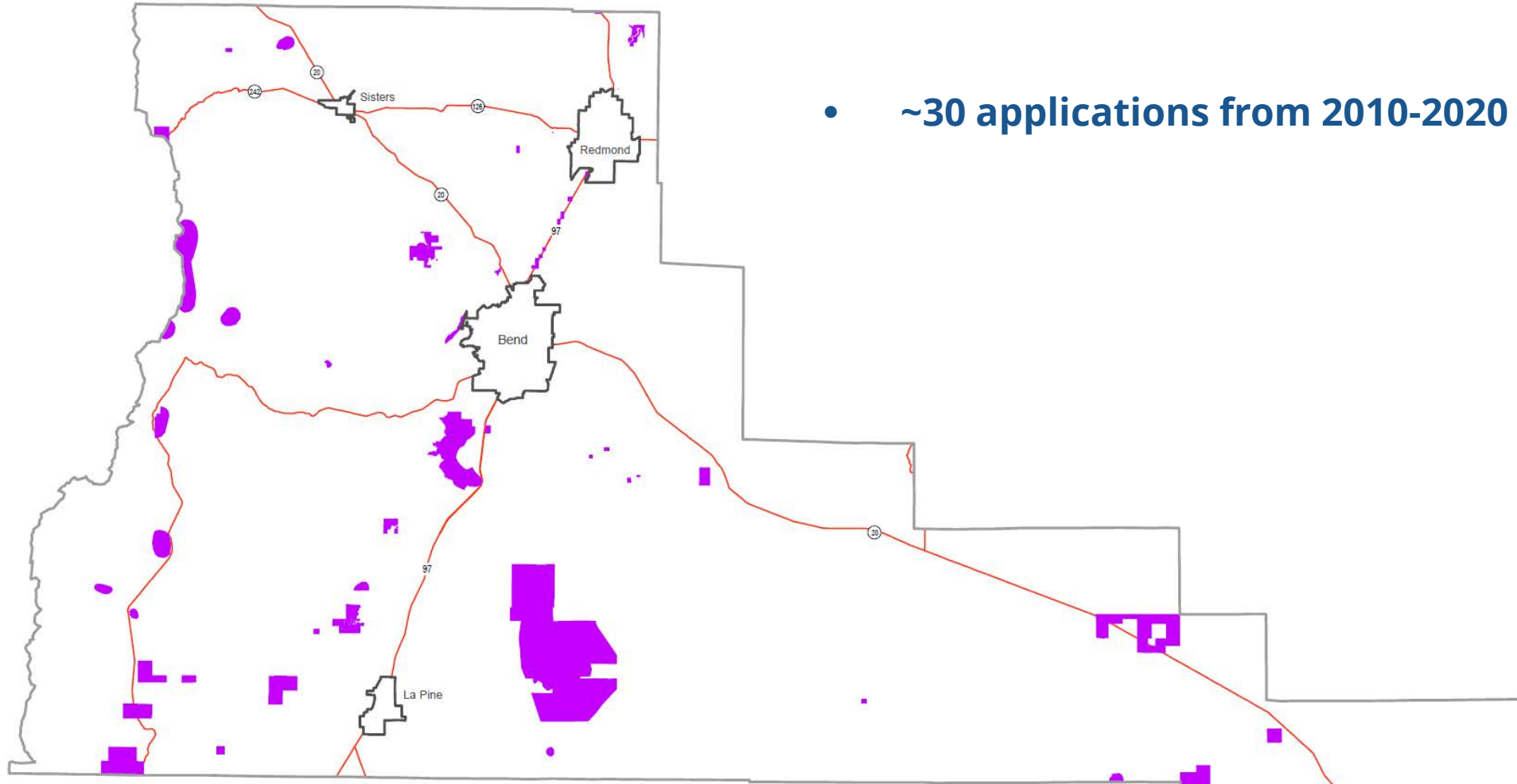
-Oregon Department of State Lands

-Bend Parks and Recreation District

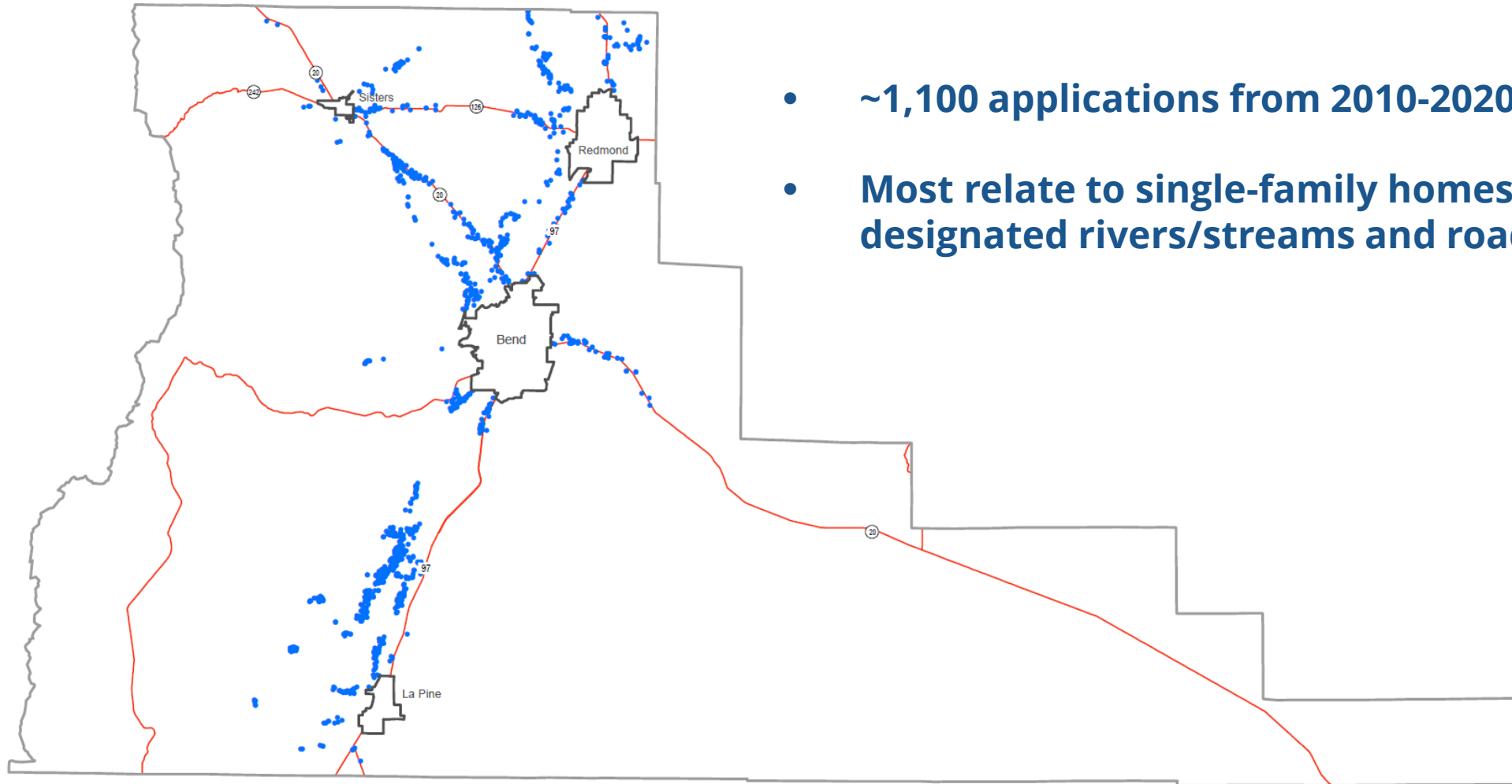
-Other federal lands



Open Space and Conservation Zone



Landscape Management Combining Zone



- ~1,100 applications from 2010-2020
- Most relate to single-family homes near designated rivers/streams and roads



Open Space – Emerging Trends

Wilderness Permits



Smith Rock / Overflow Parking



Discussion.



Historic Resources



Comprehensive Plan – Section 2.11

- Section 2.11, Cultural and Historic Resources recaps:
 - ❖ Board of County Commissioners established a Historical Landmarks Commission in 1980, creating a process to evaluate, designate and regulate historic structures
 - ❖ 35 Historic or Cultural sites in the Comprehensive Plan Inventory
 - ❖ 13 Sites in Deschutes County on the National Register of Historic Places

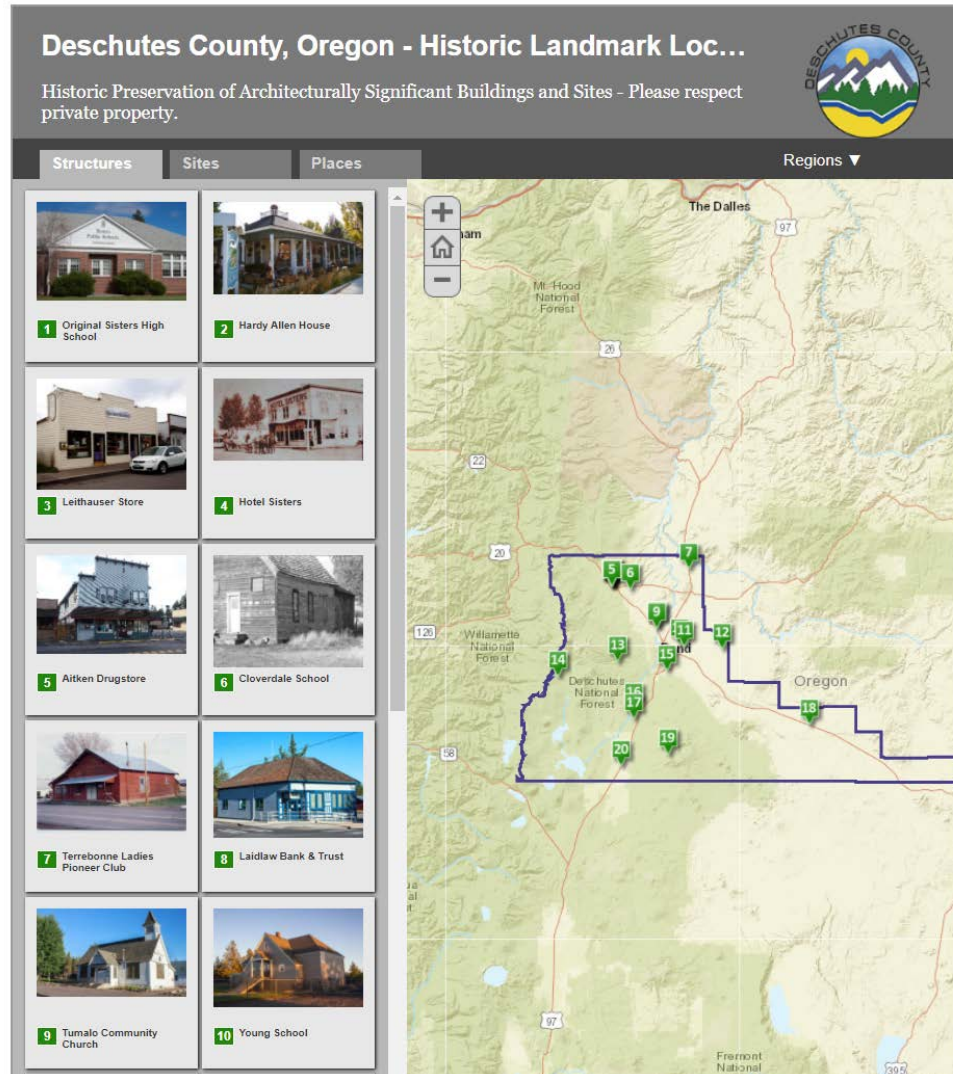


Comprehensive Plan – Section 2.11

- Section 2.11, Cultural and Historic Resource Goals and Policies recognize:
 - ❖ Maintaining Deschutes County as a Certified Local Government
 - ❖ Encouraging the preservation of lands with significant historic or cultural resources
 - ❖ Historic Landmarks Commission taking the lead in promoting historic and cultural resource preservation as defined in DCC 2.28



Historic Resources / Story Map



- 48 local and national historic landmarks in Deschutes County
- Limited land use activity from 2010-2020

<https://www.deschutes.org/cd/page/historic-preservation>



Historic Resources – Emerging Trend

National Register of Historic Places / Pilot Butte and
Central Oregon Canals



Discussion.



Mineral and Aggregate Resources



Comprehensive Plan – Section 2.10

- Section 2.10, Surface Mining recaps:
 - ❖ Aggregate and mineral resources related to pumice, cinders, building stone, sand, gravel, and crushed rock
 - ❖ Potential conflicts with neighboring land uses, particularly residential uses.
 - ❖ Updated surface mining inventories in the 1990s during Periodic Review

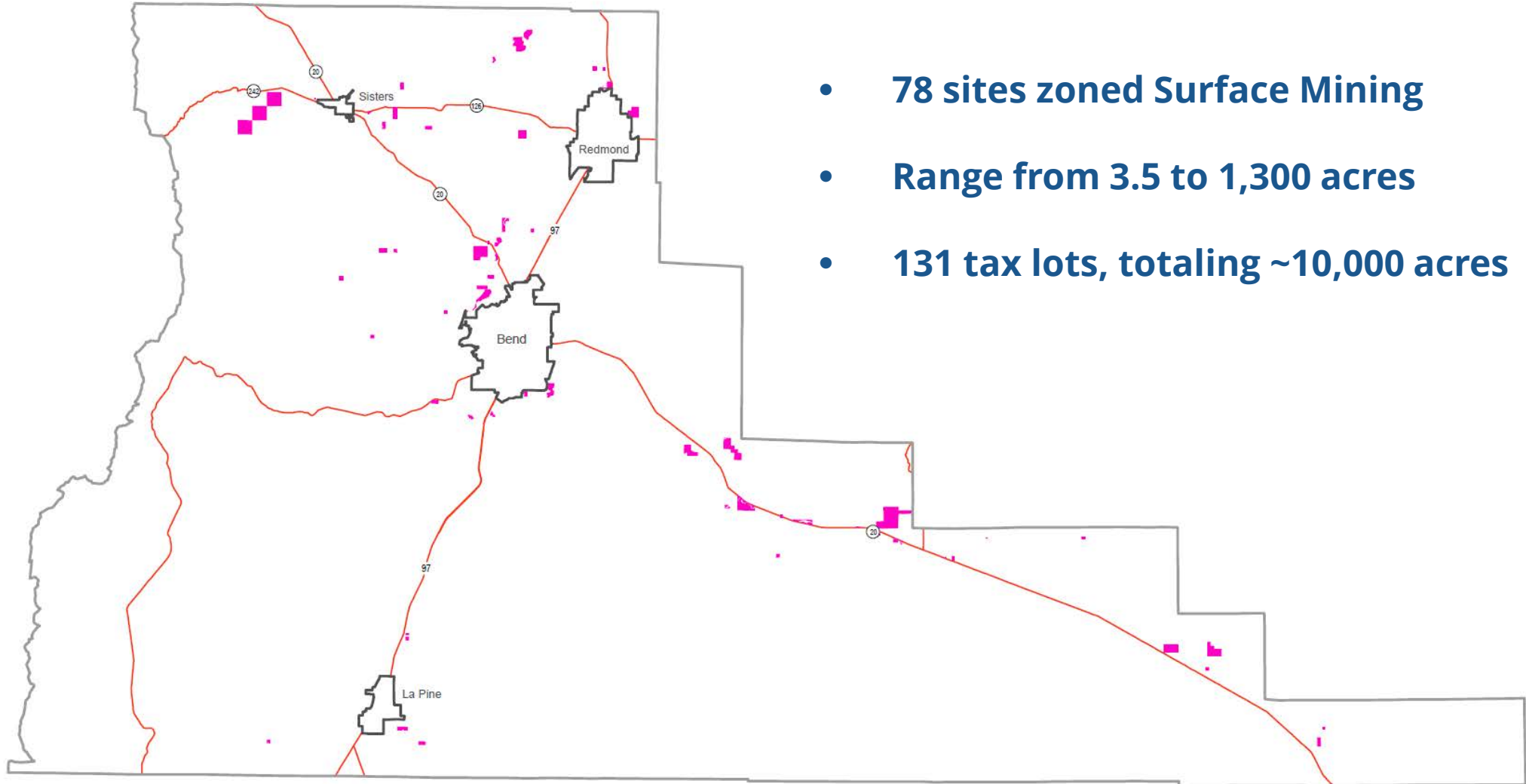


Comprehensive Plan – Section 2.10

- Section 2.6, Surface Mining Goals and Policies recognize:
 - ❖ Reviewing surface mining codes and revise as needed to consider especially mitigation factors, imported material, and reclamation
 - ❖ Coordinating mining regulations with the Oregon Department of Geology and Mineral Industries
 - ❖ Supporting efforts by private property owners and appropriate regulatory agencies to address reclamation of Goal 5 mine sites following mineral extraction



Surface Mining Zone

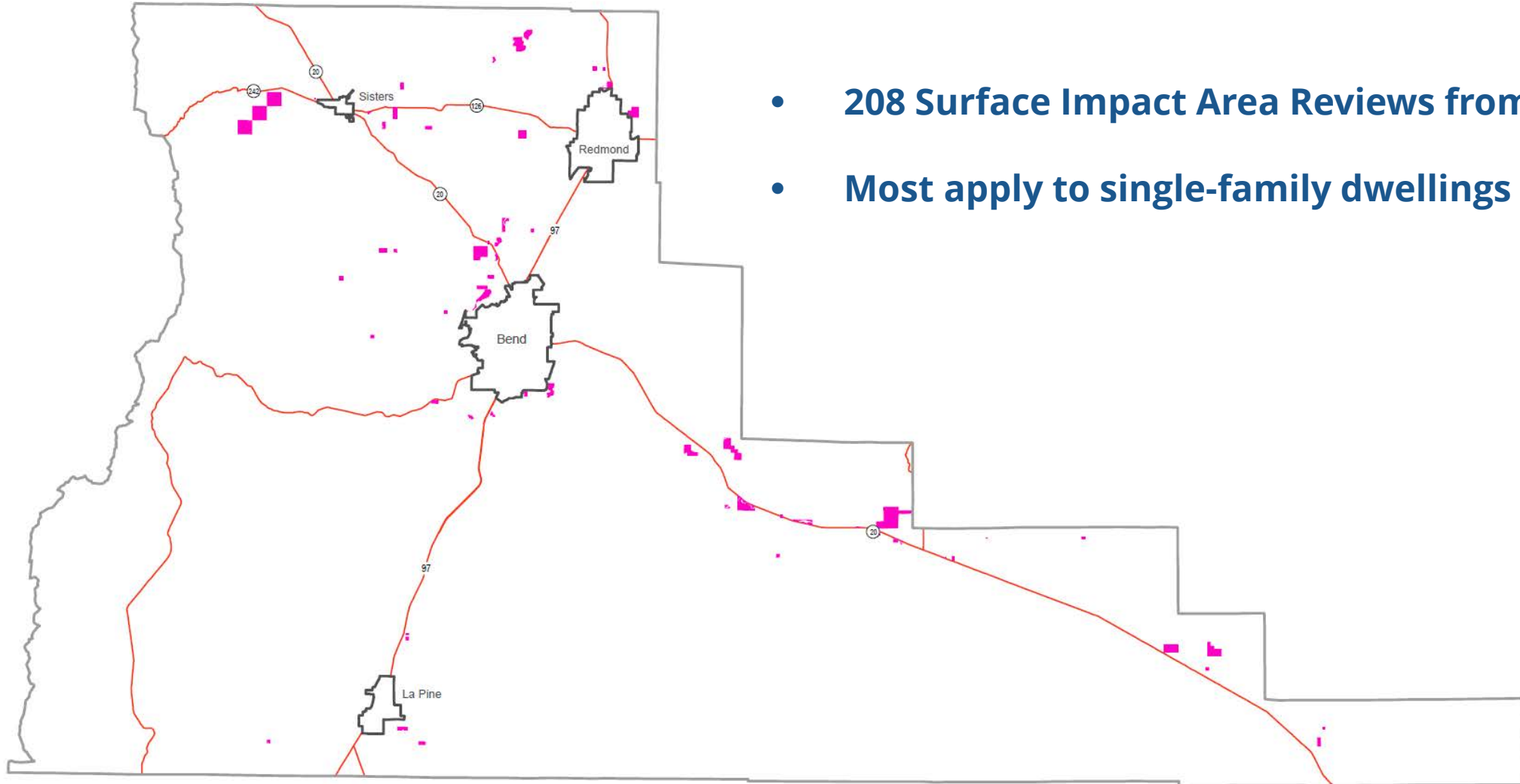


Surface Mine Development Activity (2010-2020)

- Processed ~90 land use applications
 - ❖ 17 Lot Line Adjustments
 - ❖ 10 Lot of Record Verifications
 - ❖ 10 Site Plans
 - ❖ 8 Appeals
 - ❖ 8 Extensions
 - ❖ 7 Administrative Determinations
 - ❖ 7 Landscape Management Reviews
 - ❖ 5 Conditional Uses
 - ❖ 2 Partitions
 - ❖ 2 Plan Amendments
 - ❖ 2 Subdivisions
 - ❖ 2 Zone Changes
 - ❖ 1 Declaratory Ruling
 - ❖ 1 Nonconforming Use



Surface Mining Impact Area Combining Zone



- **208 Surface Impact Area Reviews from 2010-2020**
- **Most apply to single-family dwellings**

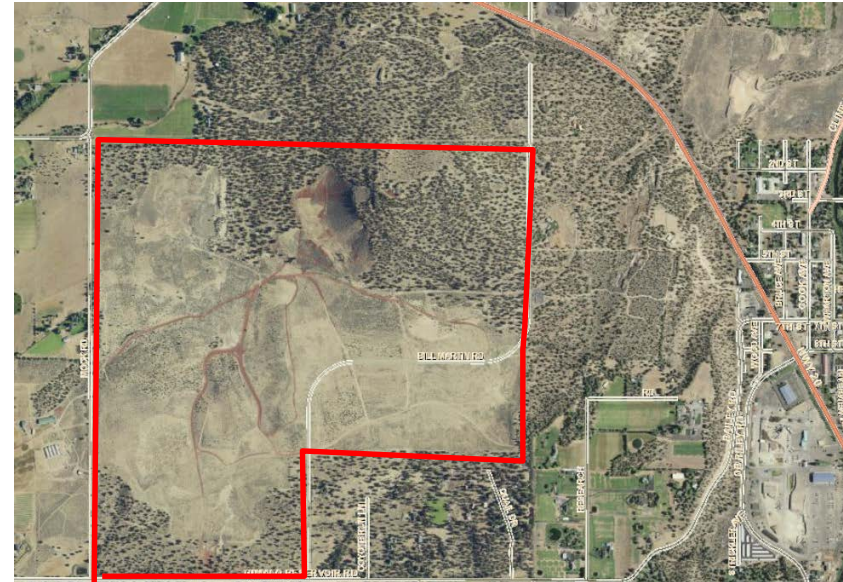


Surface Mining – Emerging Trends

Updating Surface Mining Inventory



Reclamation / Rezoning



Schedule

Dec. 10	Goal 6 Air, Water and Land Resources Quality & Goal 7 Hazards
Jan. 14	Goal 8 Recreational Needs
Jan. 28	Goal 9 Economic Development
Feb. 11	Goal 10 Housing & Goal 11 Public Facilities & Services
Feb. 25	Goal 12 Transportation
March 11	Goal 13 Energy & Goal 14 Urbanization



Discussion.

Project website:

<https://www.deschutes.org/cd/page/deschutes-2040>

