

Community Development Department

# Statewide Planning Goal 5

Part 4 of a 12-Part Series



Planning Commission, October 22, 2020

# Invited Guest

---

- Caroline House, Deschutes County Assistant Planner



# Part I

---

A. Water Resources

B. Wildlife Habitat



# Goal 5 – Natural Resources, Scenic and Historic Areas, and Open Spaces

---

- Goal emphasizes protecting natural resources and conserving scenic and historic areas and open spaces
- Local governments are required to develop inventories and adopt programs that will protect natural resources and conserve scenic, historic, and open space resources for present and future generations.



# Goal 5 – Natural Resources, Scenic and Historic Areas, and Open Spaces

- OAR 660, Division 23 (Goal 5 Requirements )
  - ❖ 660-023-0000: Purpose and Intent
  - ❖ 660-023-0010: Definitions
  - ❖ 660-023-0020: Standard and Specific Rules and Safe Harbors
  - ❖ 660-023-0030: Inventory Process
  - ❖ 660-023-0040: ESEE Decision Process
  - ❖ 660-023-0050: Programs to Achieve Goal 5
  - ❖ 660-023-0060: Notice and Land Owner Involvement
  - ❖ 660-023-0070: Buildable Lands Affected by Goal 5 Measures
  - ❖ 660-023-0080: Metro Regional Resources

Adopted by LCDC

OAR



# Goal 5 – Natural Resources, Scenic and Historic Areas, and Open Spaces

- OAR 660, Division 23 (Goal 5 Requirements )

Adopted by LCDC

OAR

- ❖ 660-023-0090: Riparian Corridors
- ❖ 660-023-0100: Wetlands
- ❖ 660-023-0110: Wildlife Habitat
- ❖ 660-023-0115: Greater Sage Grouse
- ❖ 660-023-0120: Federal Wild and Scenic Rivers
- ❖ 660-023-0130: Oregon Scenic Waterways
- ❖ 660-023-0140: Groundwater Resources
- ❖ 660-023-0150: Approved Oregon Recreation Trails
- ❖ 660-023-0160: Natural Areas
- ❖ 660-023-0170: Wilderness Areas
- ❖ 660-023-0180: Mineral Resources
- ❖ 660-023-0190: Energy Sources
- ❖ 660-023-0200: Historic Resources
- ❖ 660-023-0220: Open Space
- ❖ 660-023-0230: Scenic Views and Sites
- ❖ 660-023-0240: Relationship of Goal 5 to Other Goals
- ❖ 660-023-0250: Applicability
- ❖ 660-023-0150: Approved Oregon Recreation Trails
- ❖ 660-023-0160: Natural Areas
- ❖ 660-023-0170: Wilderness Areas



# Goal 5 – Natural Resources, Scenic and Historic Areas, and Open Spaces

- OAR 660, Division 23 (Goal 5 Requirements )

Adopted by LCDC

OAR

- ❖ 660-023-0090: Riparian Corridors
- ❖ 660-023-0100: Wetlands
- ❖ 660-023-0110: Wildlife Habitat
- ❖ 660-023-0115: Greater Sage Grouse
- ❖ 660-023-0120: Federal Wild and Scenic Rivers
- ❖ 660-023-0130: Oregon Scenic Waterways
- ❖ 660-023-0140: Groundwater Resources
- ❖ 660-023-0150: Approved Oregon Recreation Trails
- ❖ 660-023-0160: Natural Areas
- ❖ 660-023-0170: Wilderness Areas
- ❖ 660-023-0180: Mineral Resources
- ❖ 660-023-0190: Energy Sources
- ❖ 660-023-0200: Historic Resources
- ❖ 660-023-0220: Open Space
- ❖ 660-023-0230: Scenic Views and Sites
- ❖ 660-023-0240: Relationship of Goal 5 to Other Goals
- ❖ 660-023-0250: Applicability
- ❖ 660-023-0150: Approved Oregon Recreation Trails
- ❖ 660-023-0160: Natural Areas
- ❖ 660-023-0170: Wilderness Areas





# Part I

---

## A. Water Resources





# Comprehensive Plan – Section 2.5

---

- Section 2.5, Water Resource recaps:
  - ❖ Upper Deschutes Basin Hydrology
  - ❖ Water Rights and Availability
  - ❖ Water Conservation
  - ❖ Deschutes Basin Ecosystem
    - Wild & Scenic River (Upper and Middle Sections of the Deschutes River; Whychus Creek)
    - Oregon Scenic Waterways (Sections along the Upper Deschutes River)
    - Perennial Streams
    - Riparian Areas and Wetlands
    - Flood Plains
    - Fish and Aquatic Habitat



# Comprehensive Plan – Section 2.5

---

- Section 2.5, Water Resource recaps:
  - ❖ Deschutes River Mitigation and Enhancement Committee
  - ❖ Ground and Surface Water Quality
    - South County Sole Source Aquifer
    - Water Quality Limited Streams / Total Maximum Daily Loads (TMDLs)
  - ❖ Water and Land Use
    - Water Management Plans
    - Wellhead Protection
    - Central Oregon Stormwater Management Project



# Water Resources Snapshot

## River and Stream Miles

Major Rivers and Streams	Miles
Deschutes River	97
Little Deschutes River	42
Whychus Creek (lower 6-miles are in Jefferson County)	39
Tumalo Creek	16
Paulina Creek	10
Fall River	8
Crooked River	7



# Water Resources Snapshot

## Riparian Acres

Streams	Riparian Acres
Deschutes River	1,440
Little Deschutes River	2,920
Paulina Creek	846
Indian Ford Creek	573
Tumalo Creek	50
Whychus Creek	47
Fall River	43
Crooked River	38
<b>TOTAL</b>	<b>5,966</b>

Source: Deschutes County/City of Bend River Study 1986



# Water Resources Snapshot

---

## Flood Plains Adjacent to Rivers and Streams

- |                          |                     |
|--------------------------|---------------------|
| • Deschutes River        | • Long Prairie      |
| • Little Deschutes River | • Dry River         |
| • Whychus Creek          | • Spring River      |
| • Crooked River          | • Indian Ford Creek |
| • Paulina Creek          |                     |

Source: Deschutes County GIS



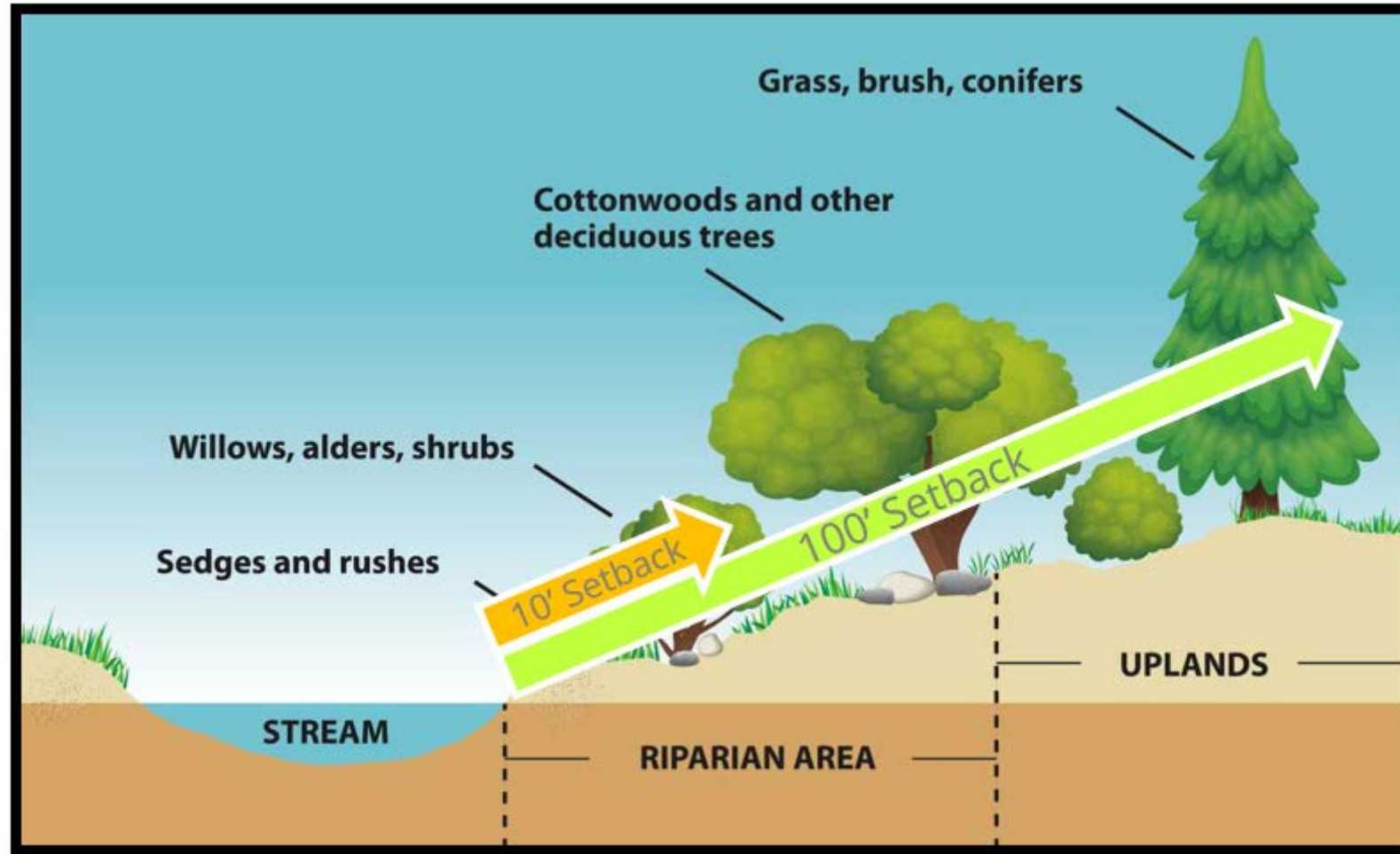
# Comprehensive Plan – Section 2.5

---

- Section 2.2, Water Resource Goals and Policies recognize:
  - ❖ Support healthy native fish populations
  - ❖ Coordinate with stakeholders to address water-related public health issues
  - ❖ Coordinate with Oregon Department of Environmental Quality on regional water quality efforts
  - ❖ Maintain and enhance healthy river and riparian ecosystems and wetlands.
  - ❖ Develop regional, comprehensive water management policies



# Riparian and Wetland Protection





# Common Development Activity 2010-2020

- Application Types
  - ❖ 816 - River Landscape Management Reviews
  - ❖ 124 - Condition Use Permits in the FP Zone
  - ❖ 33 - Administrative Determinations in the FP Zone
  - ❖ 31 - Nonconforming Use Verifications/Alterations for *existing* docks and boat slips



# Water Resources – Emerging Trends

Oregon spotted frog



Water Panel



NMFS Biological Opinion



South County Local Wetland Inventory



# Discussion.

---



# Part I

---

## B. Wildlife Habitat



# Comprehensive Plan – Section 2.6

---

- Section 2.6, Wildlife recaps:
  - ❖ Deschutes County's wildlife designations starting in 1970s
  - ❖ Wildlife Snapshot - \$78 million spent in Deschutes County on fishing, hunting, and wildlife viewing.
  - ❖ Notable Inventories
    - Deer Migration                      -Sensitive Birds
    - Deer Winter Range                -Elk
    - Antelope                                -Sage Grouse
  - ❖ Oregon Conservation Strategy
  - ❖ Interagency Report



# Comprehensive Plan – Section 2.6

---

- Section 2.6, Wildlife Goals and Policies recognize:
  - ❖ Promote stewardship of wildlife habitats and corridors
  - ❖ Support incentives for preserving wildlife habitat by traditional or innovative means, including zoning, land swaps, and conservation easements
  - ❖ Ensure Goal 5 wildlife inventories and habitat protection programs are up to date
  - ❖ Use combination of incentives, regulations, and education to protect wildlife habitat and address development impacts





# Wildlife Area Combining Zone

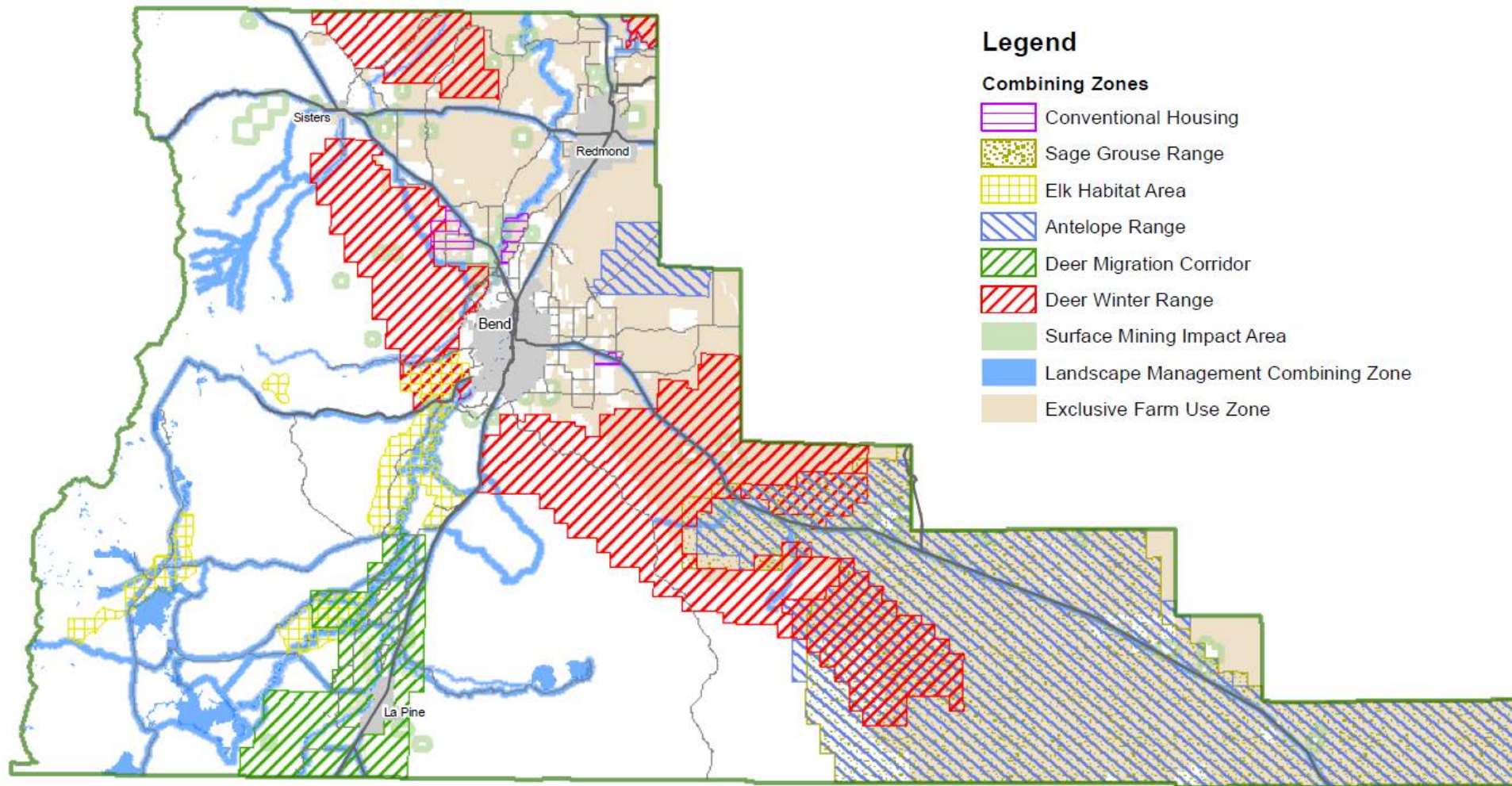
---

- ❖ ~816,000 acres in Deschutes County's Wildlife Area Combining Zone.
- ❖ 70% is owned and managed by the federal government through the U.S. Forest Service (USFS) and Bureau of Land Management (BLM).
- ❖ Wildlife habitat on non-federal Lands:
  - Deer Migration (~47,000 acres)
  - Elk Habitat (~13,000 acres)
  - Deer Winter Range (~79,000 acres)
  - Antelope Range (~118,000 acres)





# Wildlife Area Combining Zone



# Sensitive Bird and Sage Grouse Combining Zones

- **Sensitive Bird**

- ❖ ~2,800 acres in Deschutes County's Sensitive and Mammal and Combining Zone.
- ❖ 55% located on non-federal land
- ❖ 40 sites protected by buffer area

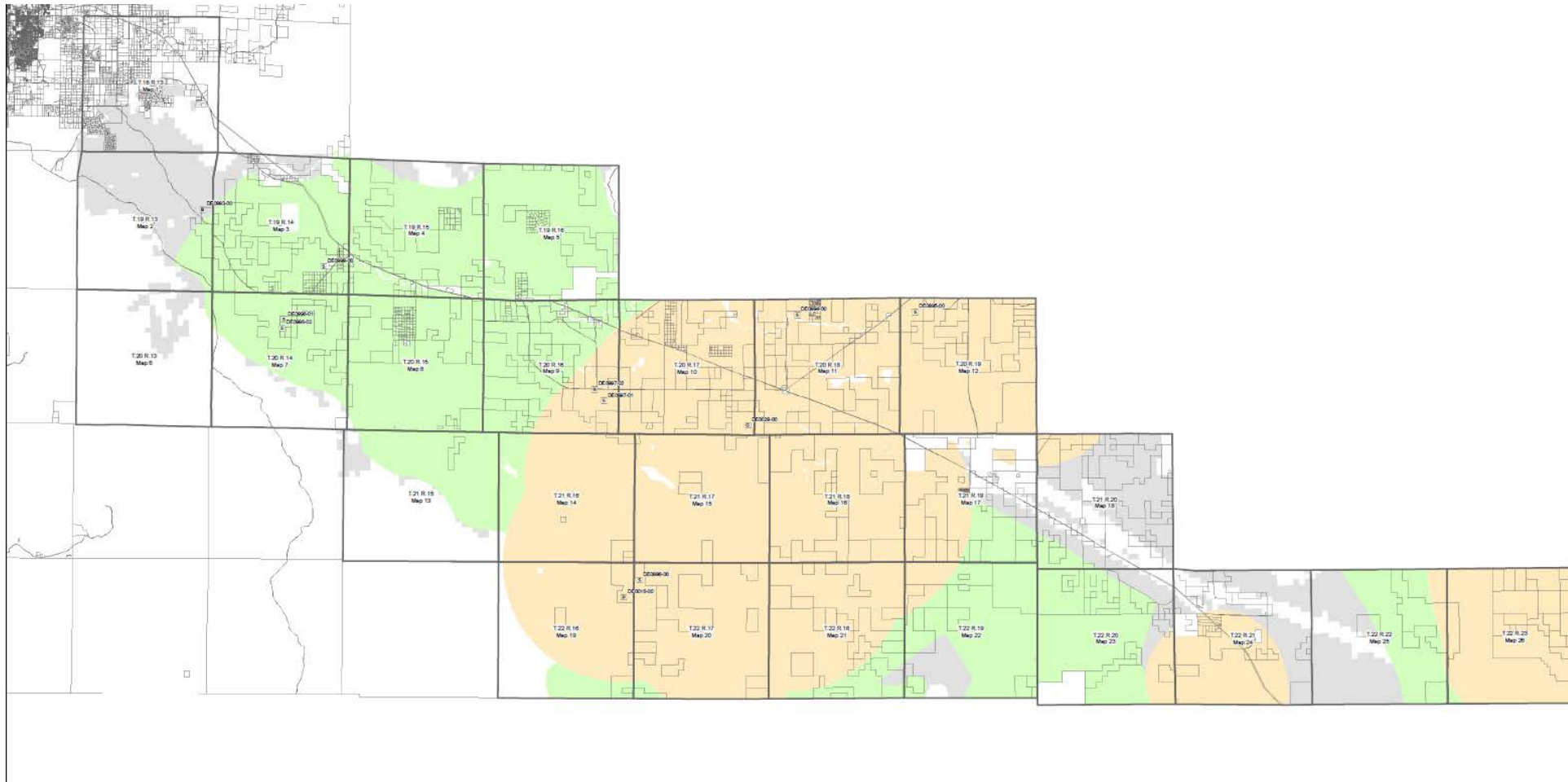


- **Greater Sage Grouse**

- ❖ ~490,000 acres in Sage Grouse Combining Zone.
- ❖ 27% located on non-federal land
- ❖ 7 lek sites protected



# Sage Grouse Area Combining Zone



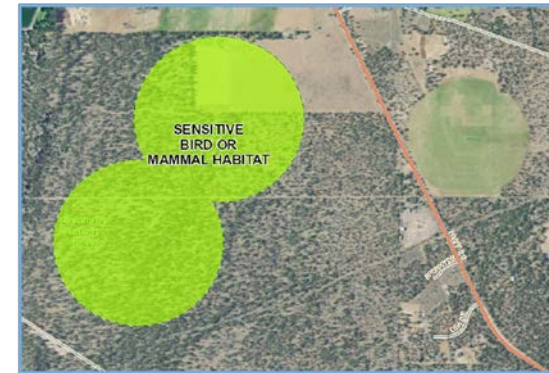
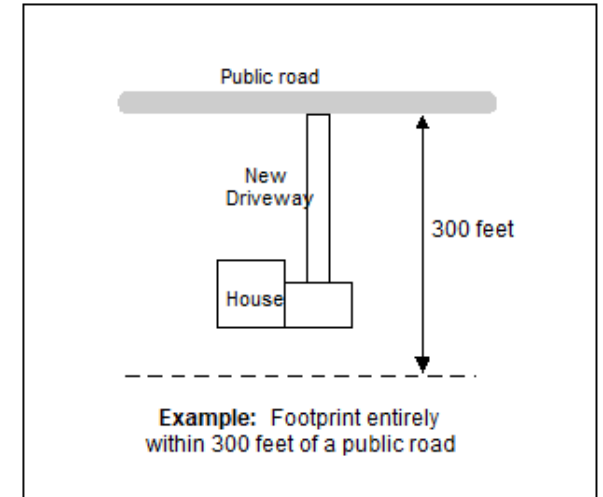
# Common Development Activity (2010-2020)

- Application Types

- ❖ 875 – Single-family Dwelling Building Permits Issued in the WA Combining Zone

- ❖ 34 – Partition Approvals in the WA Combining Zone

- ❖ 6 – Site Plan Approvals in the SBMH Combining Zone





# Wildlife – Emerging Trends

---

## Cluster Development

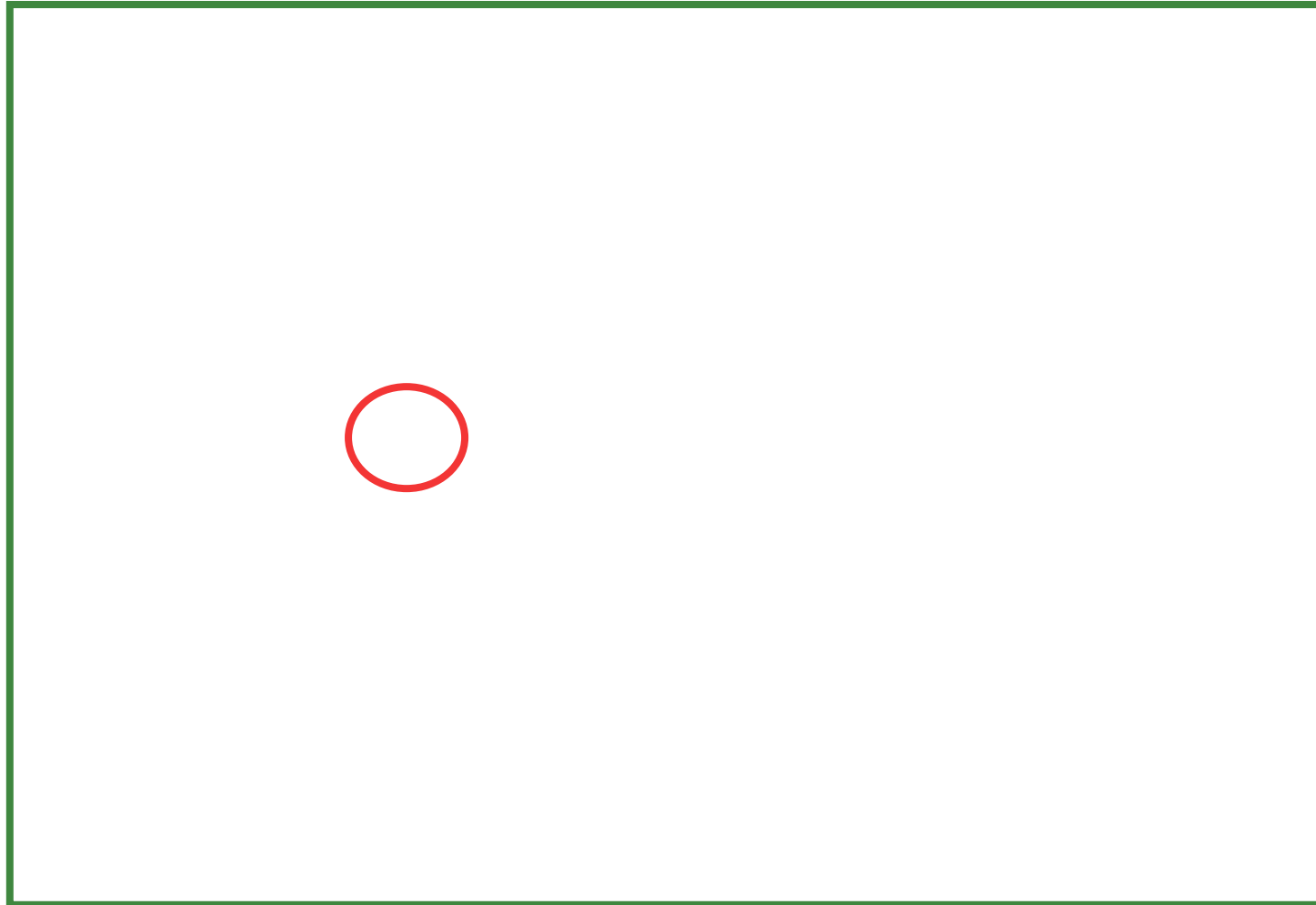


## Sage Grouse



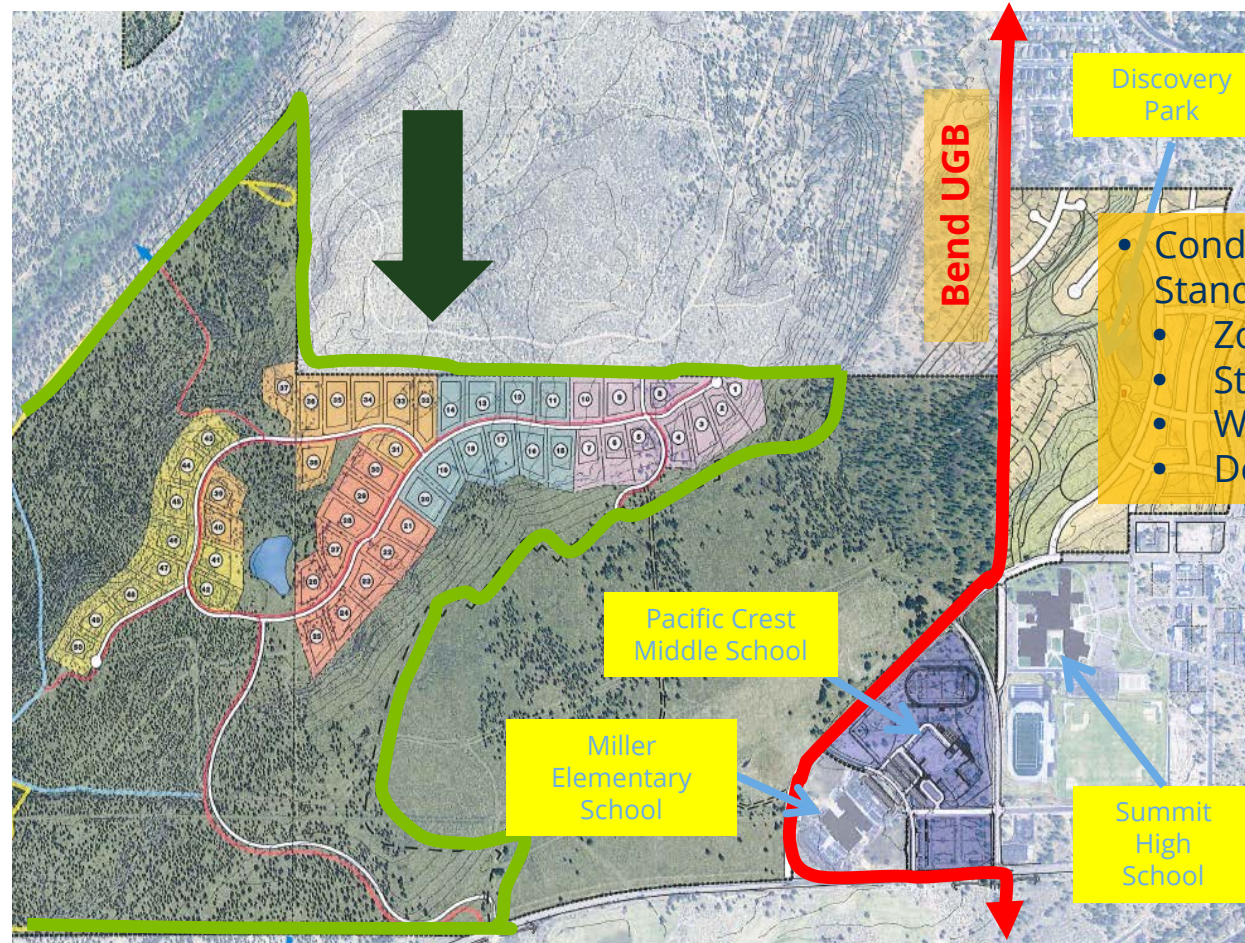
# Miller Tree Farm

---



# Miller Tree Farm Case Study

- 5 phase subdivision proposal
- 50, two-acre residential lots
- 422 acres of preserved open space
- Comprehensive trail network



- Conditional Use Permit / Subdivision Standards
  - Zoning
  - Street connectivity
  - Water and Wastewater
  - Defensible Space & Wildlife Area





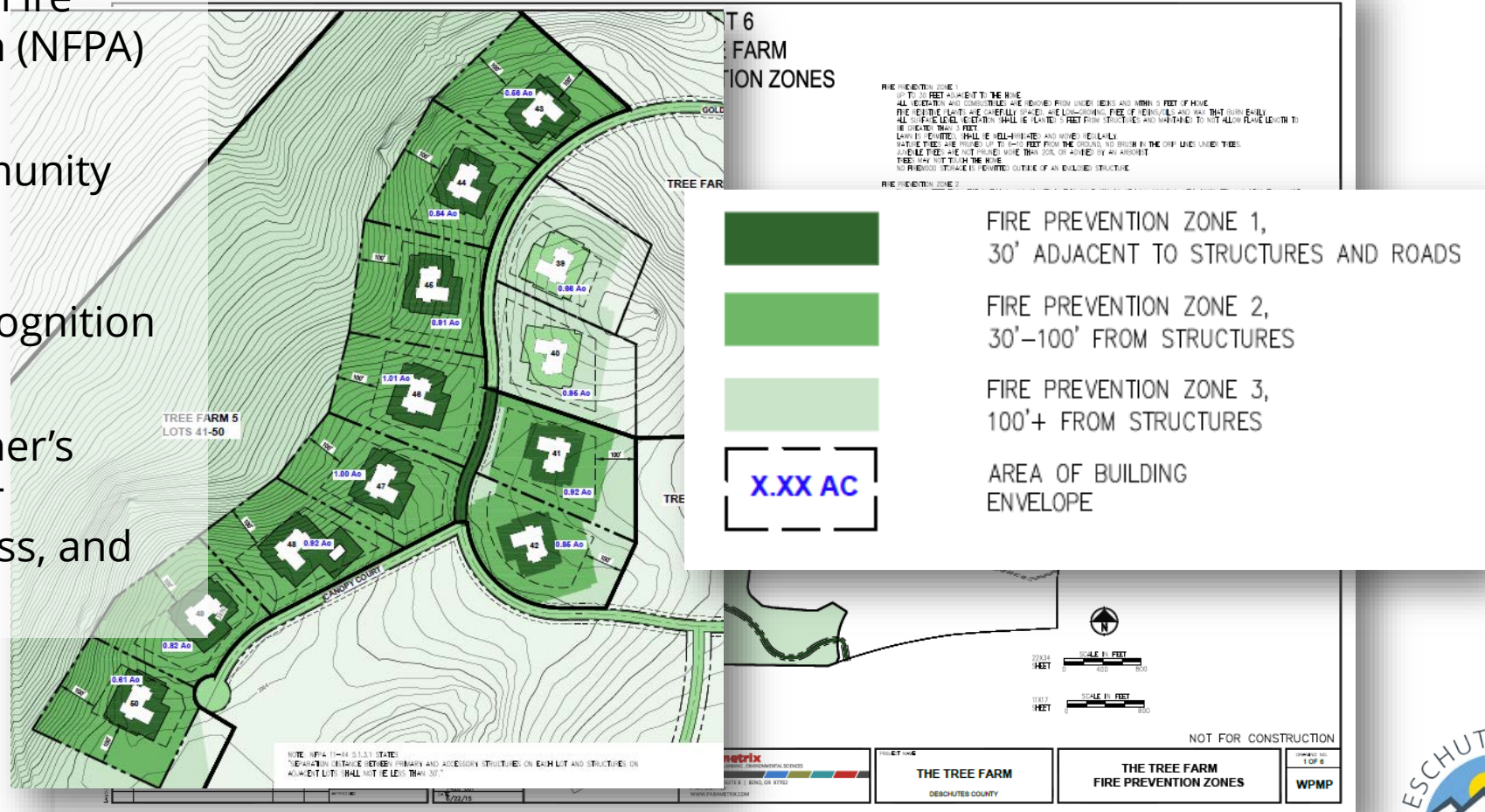
# Miller Tree Fire Mitigation Plan

Comply with National Fire Protection Association (NFPA) Standards

Obtain Firewise Community Recognition

Annual renewal of recognition required

CCRs Detail Homeowner's Responsibilities for Construction, Access, and Defensive Space.



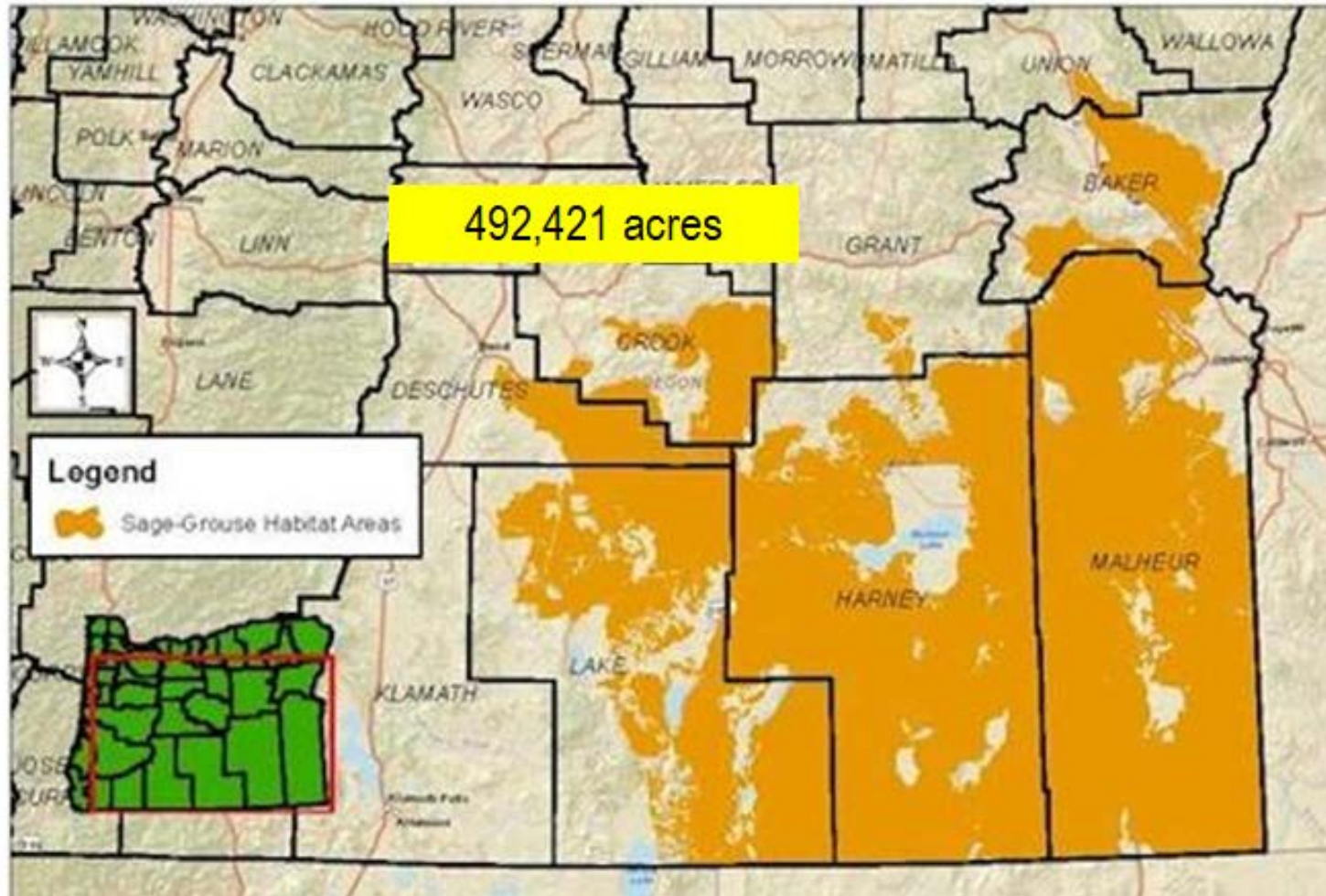


- Required to submit a wildlife plan for the open space
- Complete Biological Audit Report every 3 to 5 years
- CCRs Detail Homeowner's Responsibilities for implementation





# Oregon Greater Sage Grouse Habitat



# Schedule

---

Nov. 12	Goal 5 Parts 2 & 3: Scenic & Open Spaces, Historic Resources, Mineral and Aggregate Resources
Dec. 10	Goal 6 Air, Water and Land Resources Quality & Goal 7 Hazards
Jan. 14	Goal 8 Recreational Needs
Jan. 28	Goal 9 Economic Development
Feb. 11	Goal 10 Housing & Goal 11 Public Facilities & Services
Feb. 25	Goal 12 Transportation
March 11	Goal 13 Energy & Goal 14 Urbanization



# Discussion.

---

**Project website:**

<https://www.deschutes.org/cd/page/deschutes-2040>

