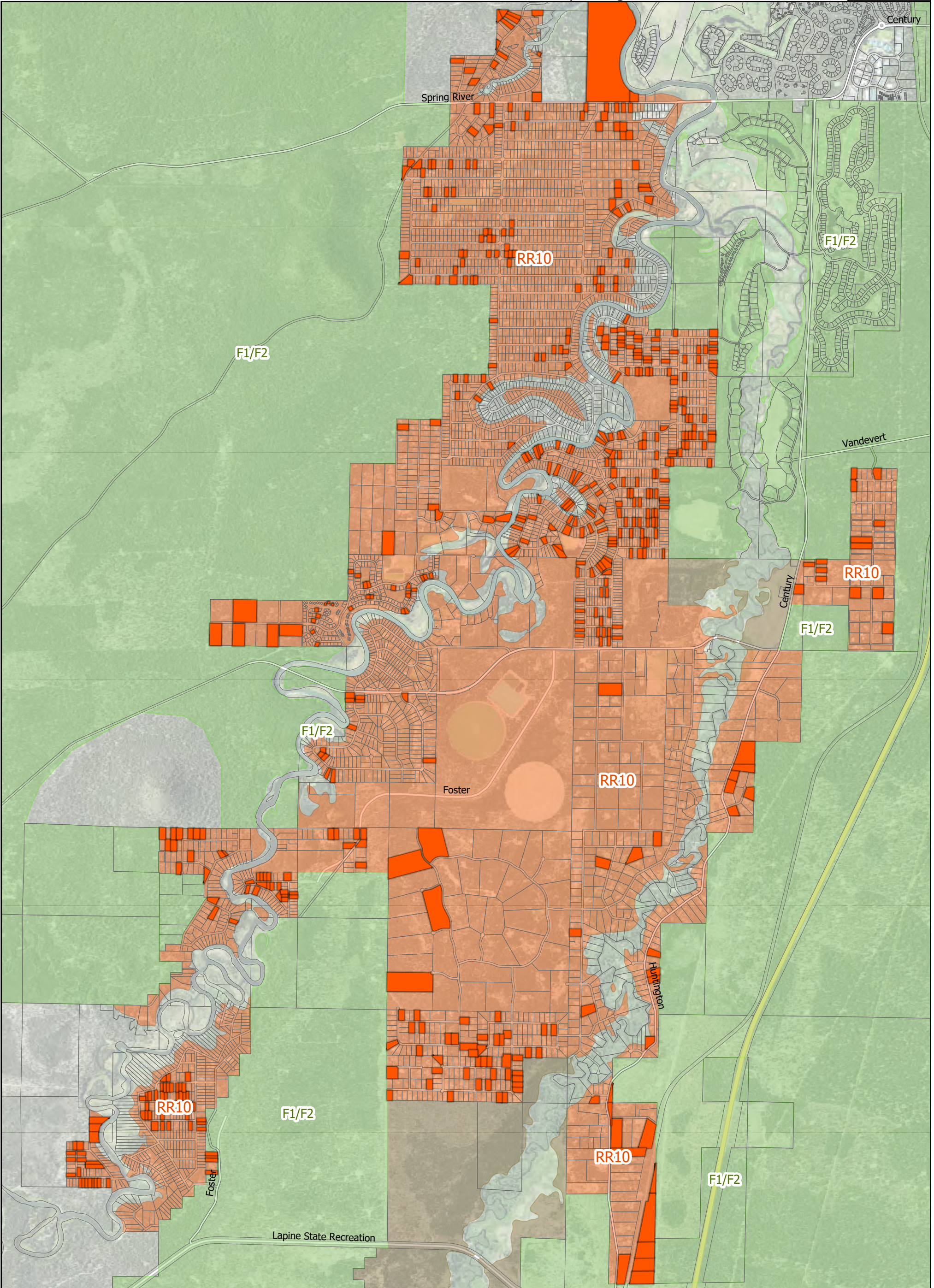


# Vacant\* Residential County Lands - Sunriver Area

Vacant\* Taxlots with County Zoning

Map No.: 4a



- |             |                                 |
|-------------|---------------------------------|
| <b>ZONE</b> | Taxlots on map: 6,500           |
| RR10        | Vacant Lots in RR10 on map: 550 |
| EFU         |                                 |
| F1;F2       |                                 |



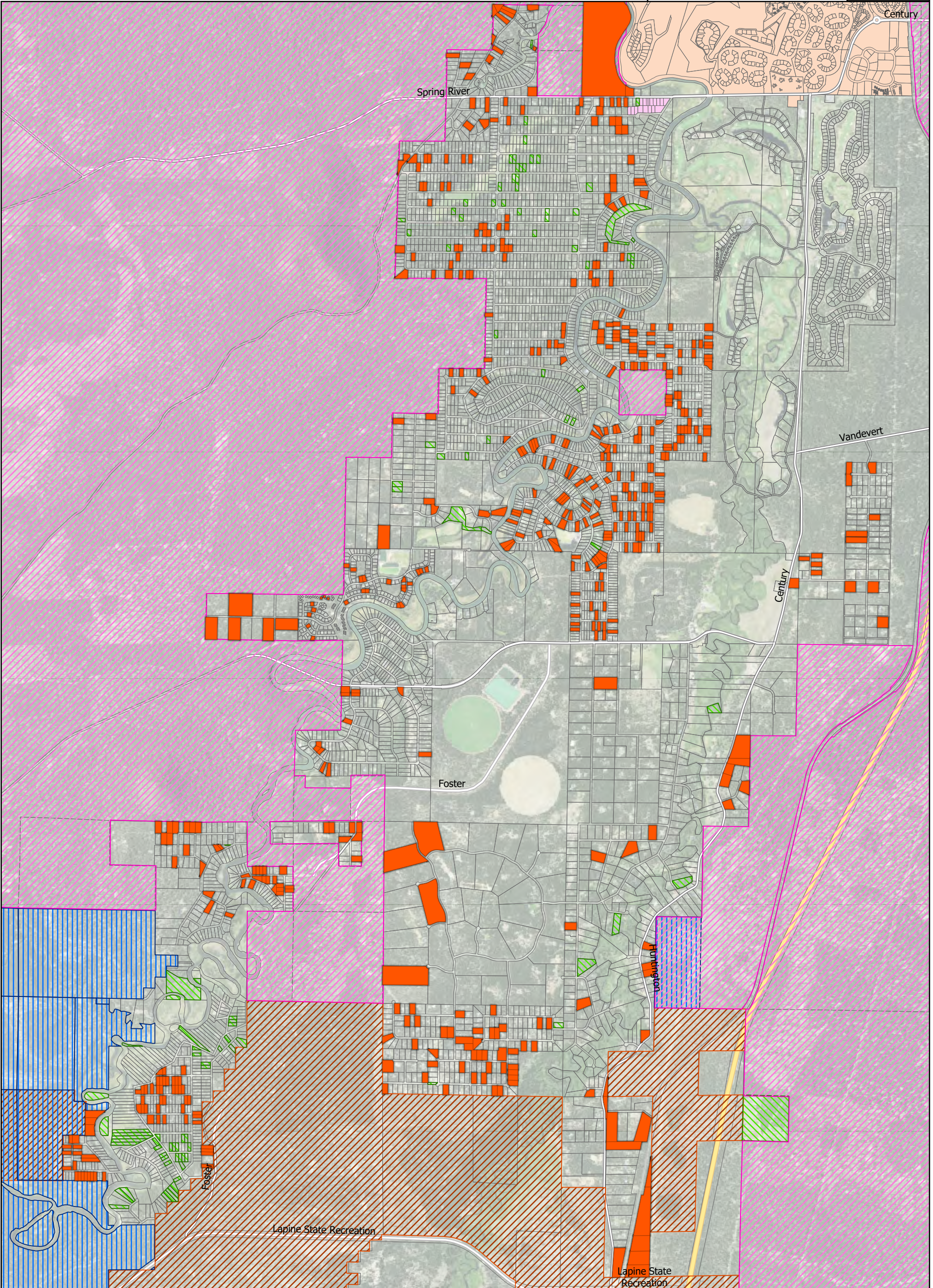
\*Vacant: Please refer to methodology in report for definition of "vacant".






7/15/2020 12:40 PM


# Vacant\* Residential County Lands - Sunriver Area

Vacant\* Taxlots with Public Lands Ownership

Map No.: 4b



- Public Lands Ownership
-  BLM
  -  DESCHUTES COUNTY
  -  STATE OF OREGON
  -  USA
  -  USFS

 Vacant Lots in RR10 on map: 550



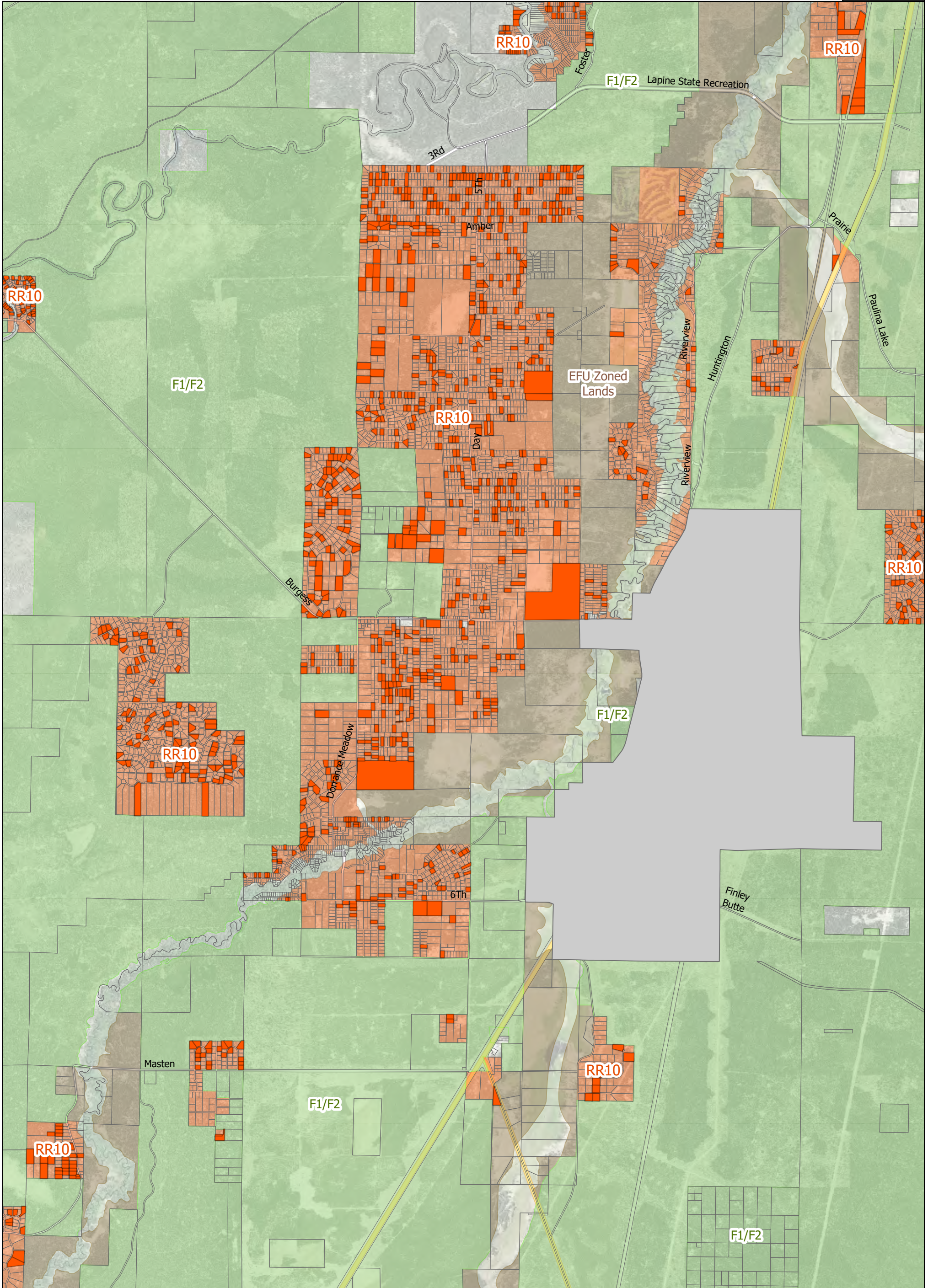
\*Vacant: Please refer to methodology in report for definition of "vacant".

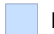





7/15/2020 12:40 PM

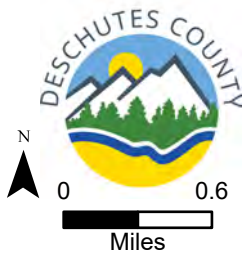
# Vacant\* Residential County Lands - La Pine Area

Vacant\* Taxlots with County Zoning

Map No.: 5a



 MUA10	 Taxlots on map: 8,063
 RR10	 Vacant Lots in RR10 on map: 1031
 EFU	
 F1;F2	



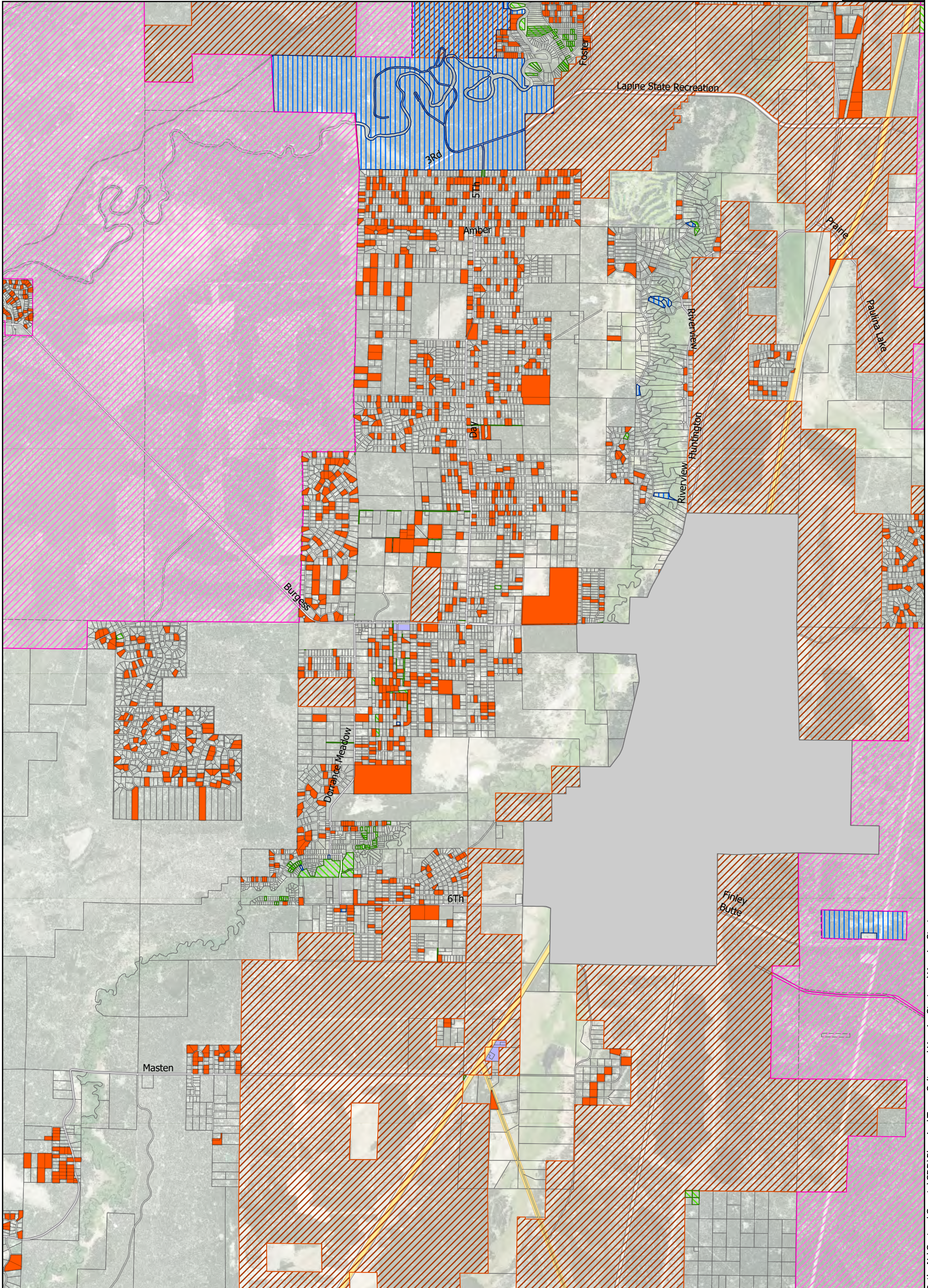
\*Vacant: Please refer to methodology in report for definition of "vacant".

7/15/2020 12:13 PM

# Vacant\* Residential County Lands - La Pine Area

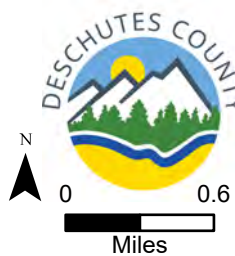
Vacant\* Taxlots with Public Lands Ownership

Map No.: 5b



- Public Lands Ownership
- BLM
  - DESCHUTES COUNTY
  - STATE OF OREGON
  - USA
  - USFS

- Taxlots on map: 8119
- Vacant Lots in RR10 on map: 1044



\*Vacant: Please refer to methodology in report for definition of "vacant".

7/15/2020 11:15 AM