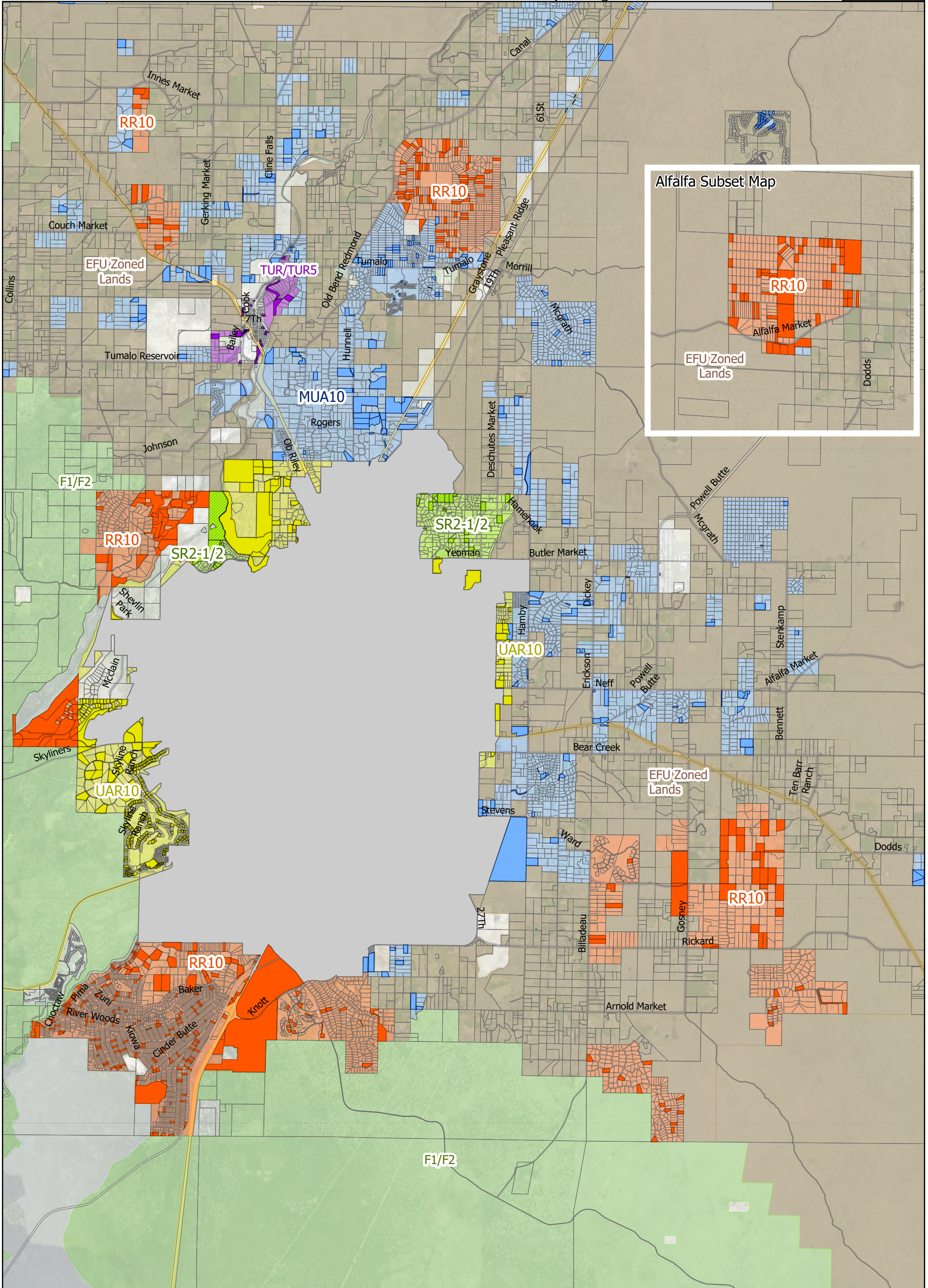


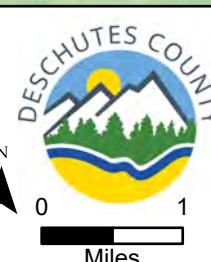
Vacant* Residential County Land - Bend and Alfalfa Area

Vacant* Taxlots with County Zoning

Map No.: 3a



ZONE	EFU	Taxlots on map: 53,687	Vacant Lots in TUR;TUR5 on map: 38
MUA10	F1/F2	Vacant Lots in MUA10 on map: 242	Vacant Lots in SR2-1/2 on map: 27
RR10	SR2-1/2	Vacant Lots in RR10 on map: 393	Vacant Lots in UAR10 on map: 291
TUR;TUR5	UAR10		



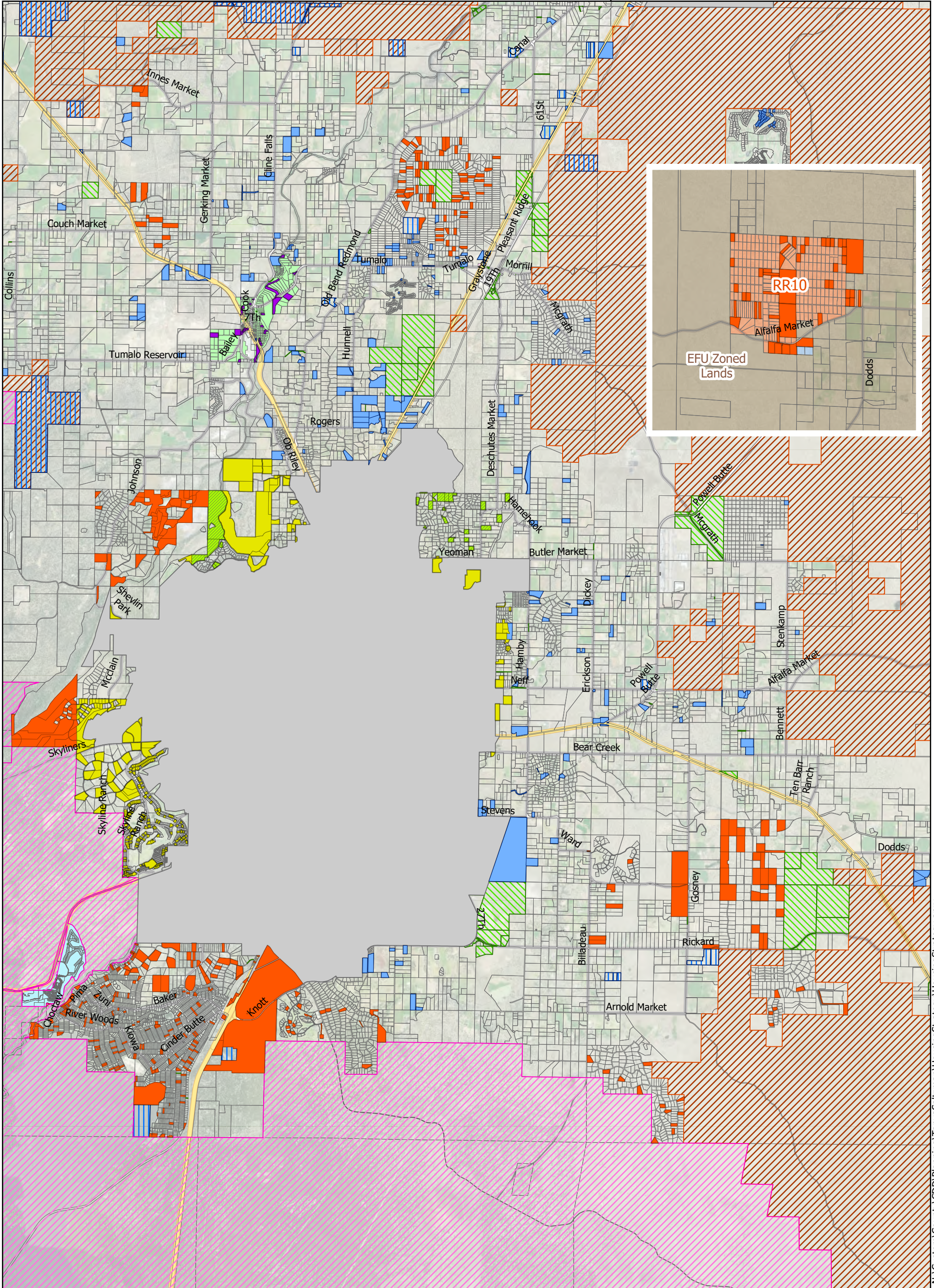
*Vacant: Please refer to the methodology in report for definition of "vacant".

7/15/2020 4:58 PM

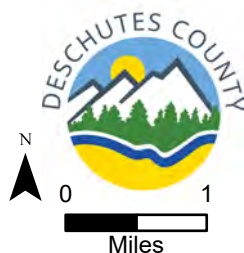
Vacant* Residential County Land - Bend and Alfalfa Area

Vacant* Taxlots with Public Lands Ownership

Map No.: 3b



- | | |
|------------------------|------------------------------------|
| Public Lands Ownership | □ Taxlots on map: 53700 |
| BLM | Vacant Lots in MUA10 on map: 243 |
| DESCHUTES COUNTY | Vacant Lots in RR10 on map: 393 |
| STATE OF OREGON | Vacant Lots in TUR;TUR5 on map: 38 |
| USA | Vacant Lots in SR2-1/2 on map: 27 |
| USFS | Vacant Lots in UAR10 on map: 291 |



*Vacant: Please refer to the methodology in report for definition of "vacant".

7/15/2020 5:54 PM