



# PLANNING PROGRAM OVERVIEW

Spring 2017





# CDD Mission Statement

> Protect Public  
Health & Safety

> 1-stop shop for  
development  
services

> Coordination

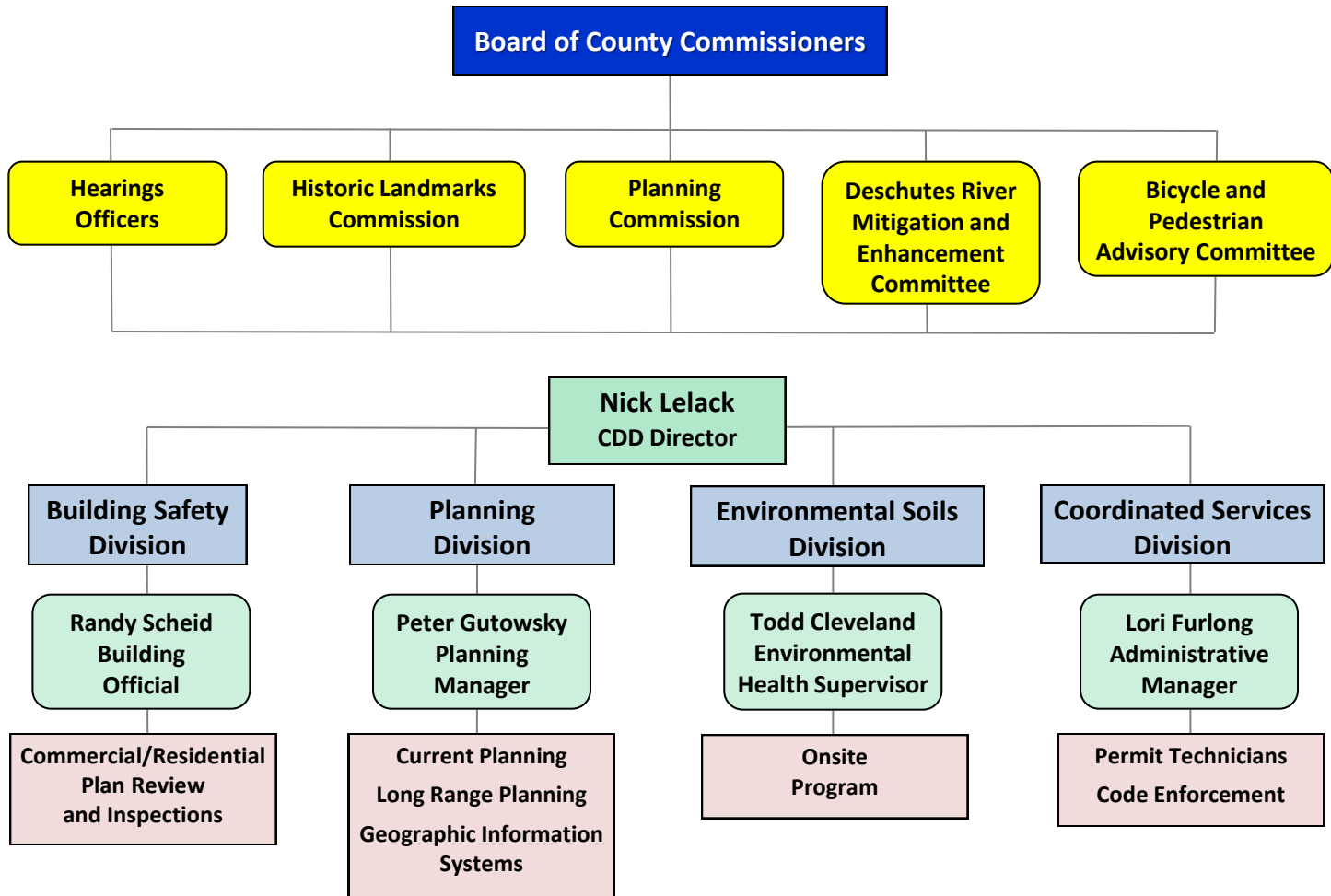
> Partnerships

> Fee Supported

To **facilitate** orderly growth and  
development in the Deschutes County  
community through **coordinated** programs  
of Land Use Planning, Environmental Soils,  
Building Safety, Code Enforcement,  
**education**, and **service** to the public.

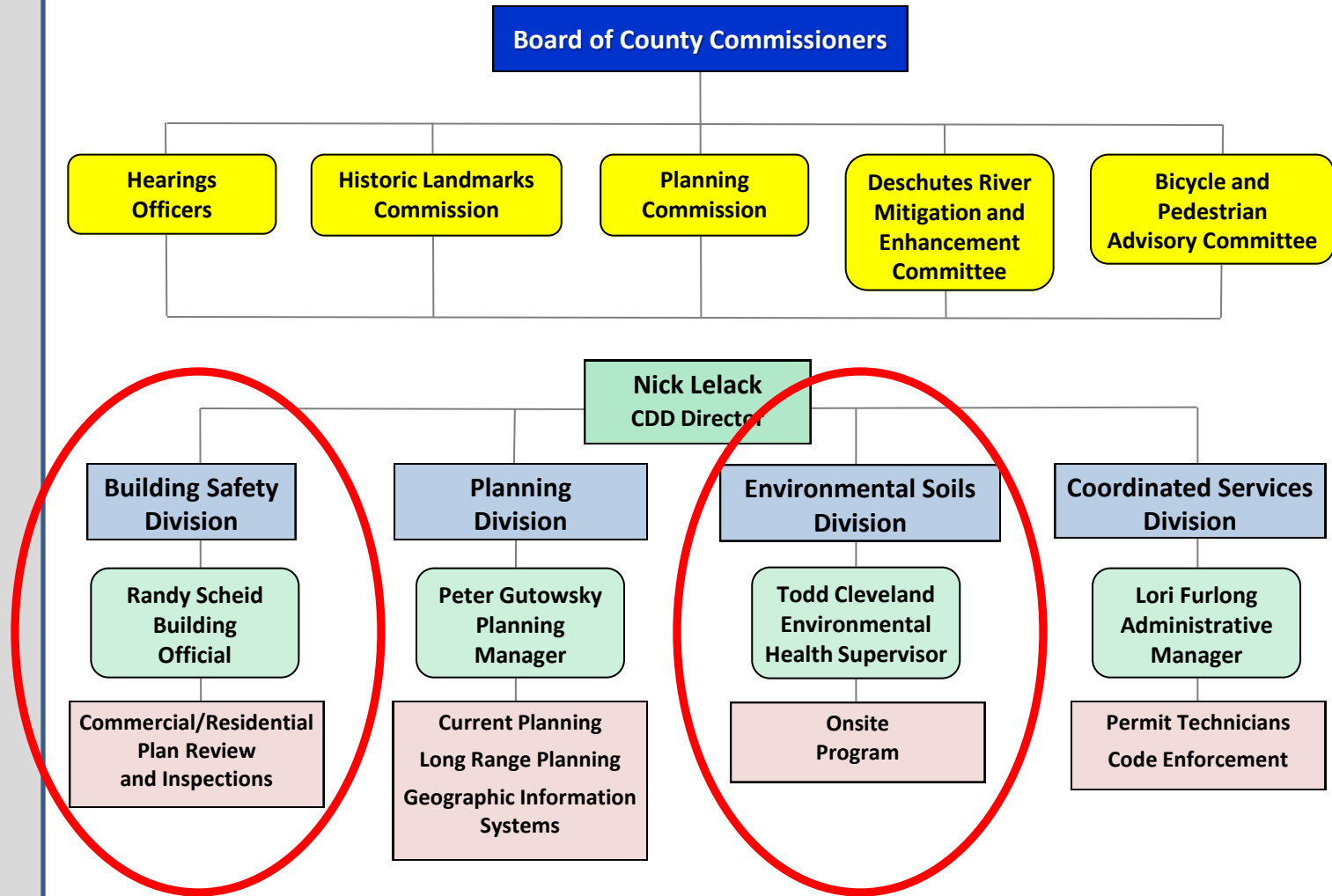


# Overview



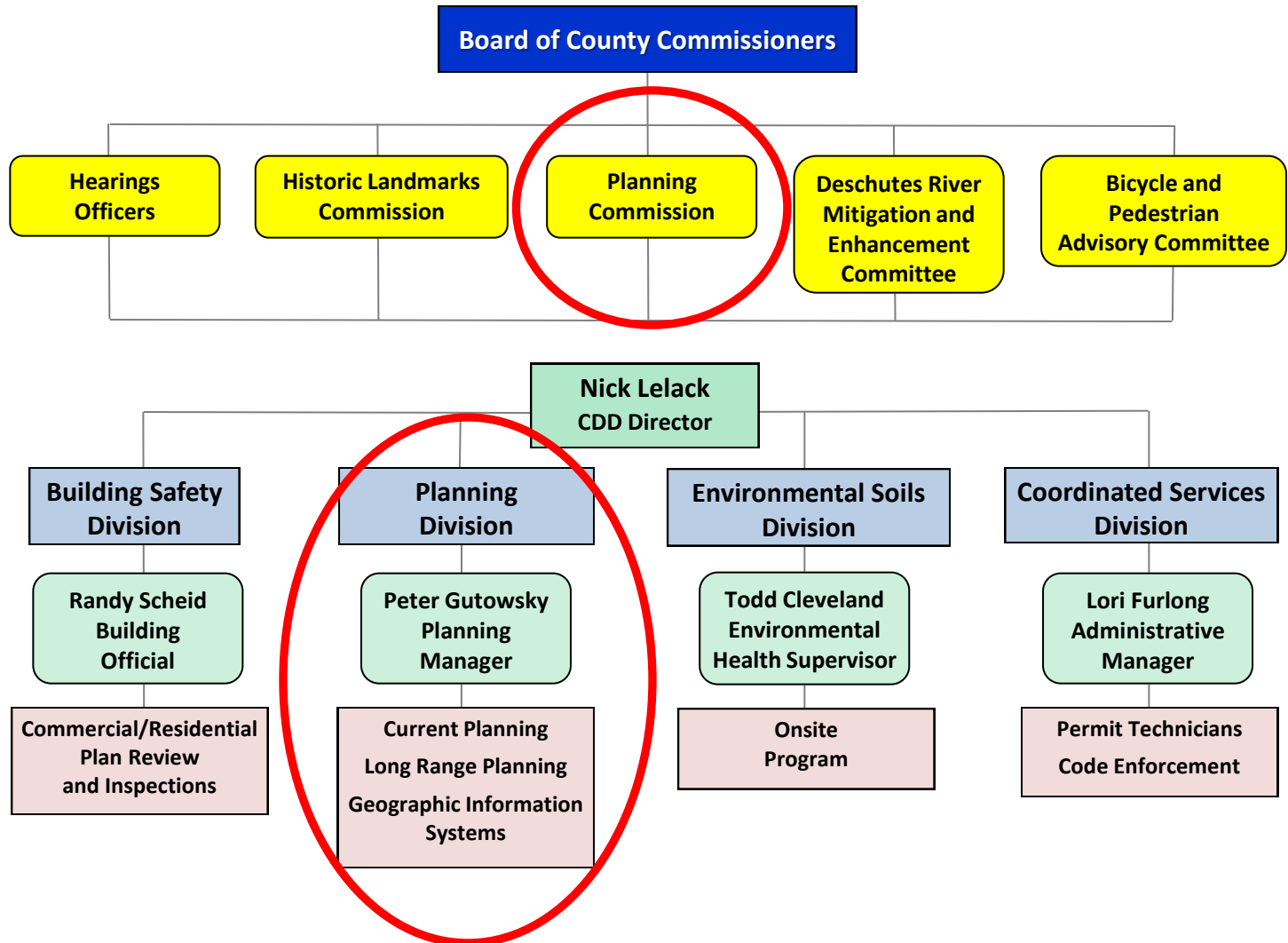


# Agents of the State





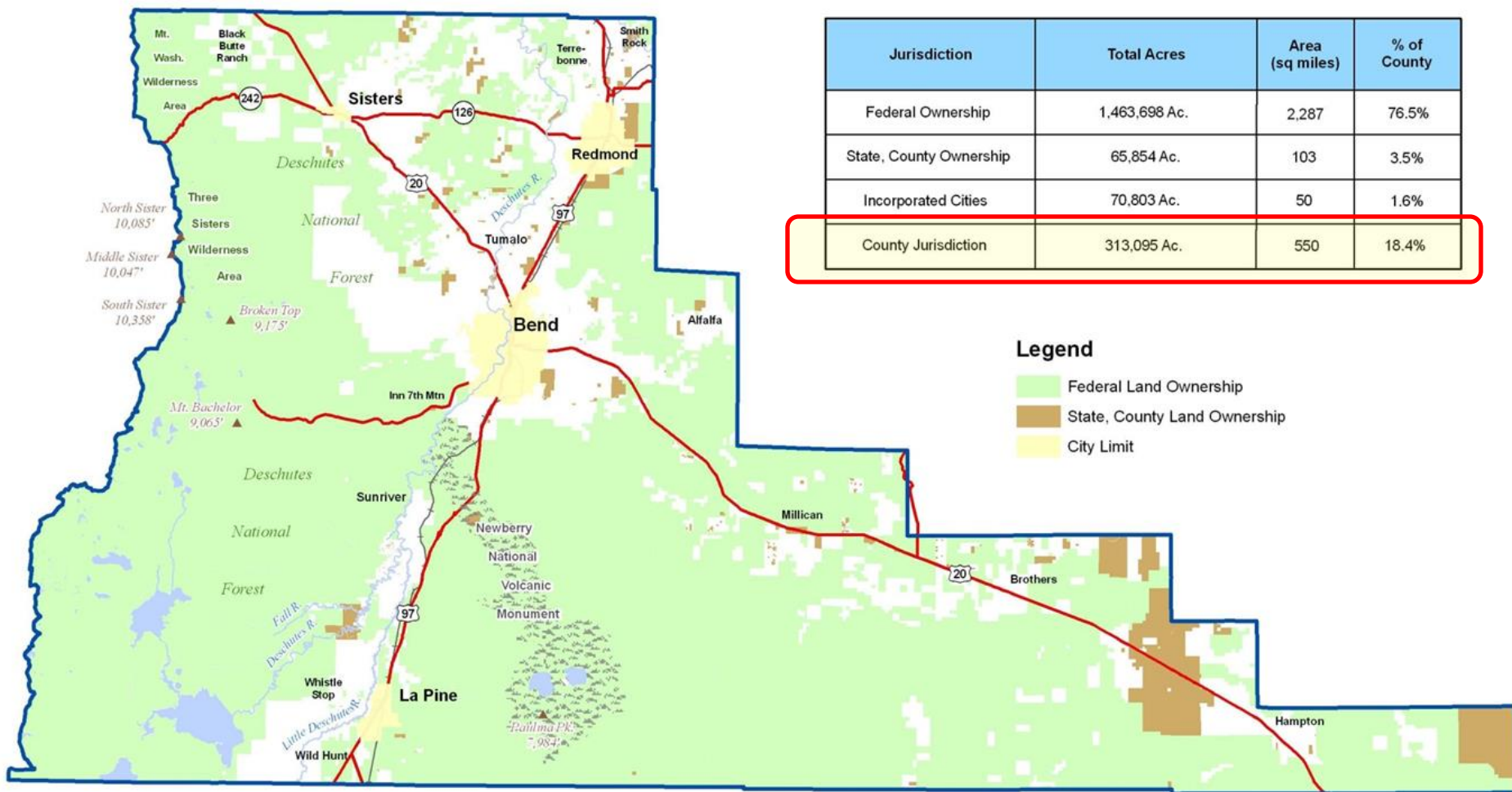
# Implements State Law



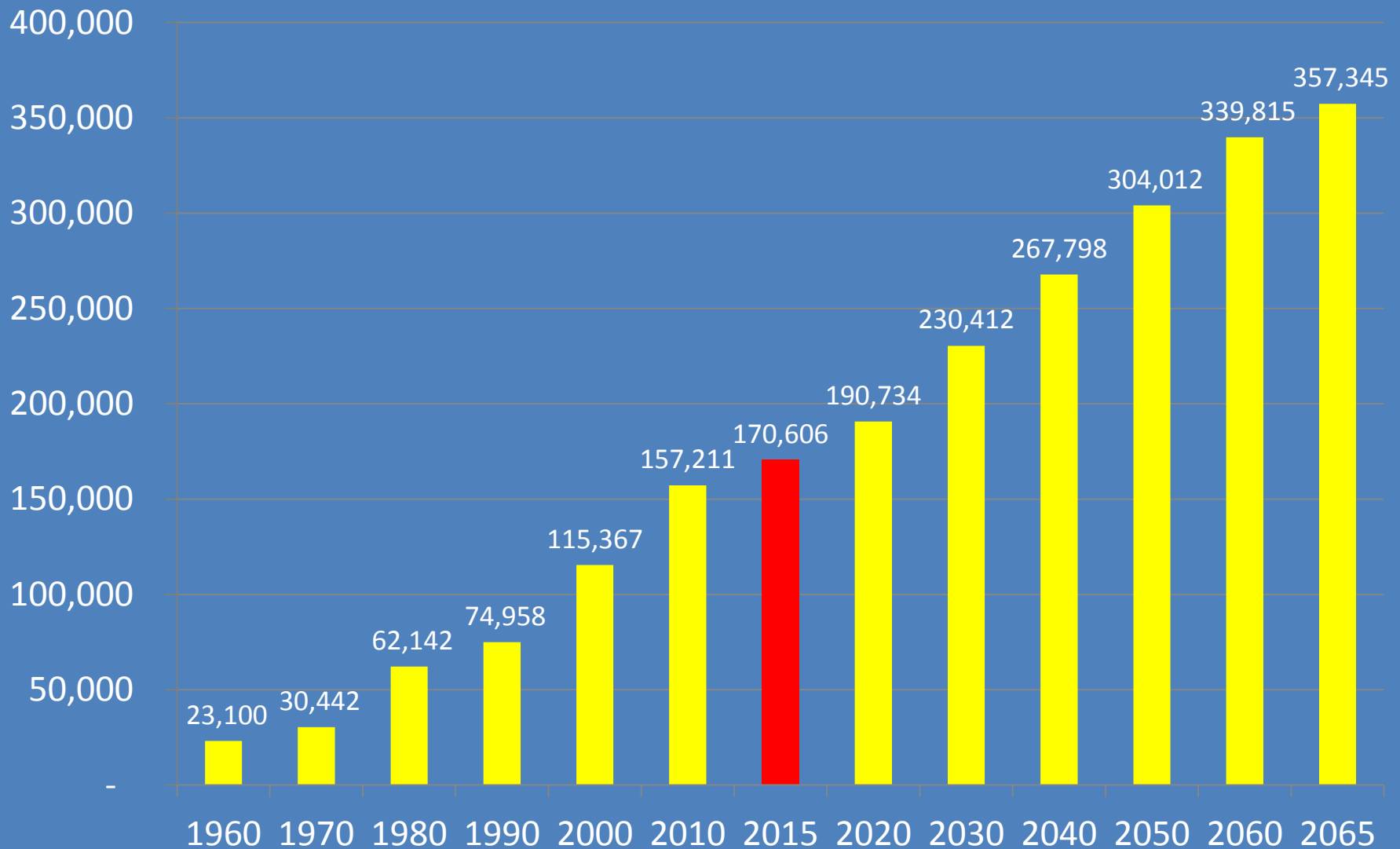




# Jurisdiction



# Deschutes County Growth\*



\*Portland State University Population Research Center

# PSU Population Forecast

## Coordinated Population Forecast

**2015**

Through

**2065**

**Deschutes  
County**

Urban Growth  
Boundaries (UGB)  
& Area Outside UGBs

 Population Research Center  
PORTLAND STATE UNIVERSITY

	<u><b>2015</b></u>	<u><b>2035</b></u>	<u><b>2065</b></u>
<b>BEND:</b>	<b>85,737</b>	<b>132,209</b>	<b>194,793</b>
<b>RURAL:</b>	<b>53,151</b>	<b>69,627</b>	<b>84,719</b>
<b>REDMOND:</b>	<b>27,715</b>	<b>39,812</b>	<b>64,785</b>
<b>SISTERS:</b>	<b>2,315</b>	<b>4,375</b>	<b>7,212</b>
<b>LA PINE:</b>	<b>1,687</b>	<b>3,014</b>	<b>5,836</b>
<b>TOTAL:</b>	<b>170,606</b>	<b>249,037</b>	<b>357,345</b>





# PLANNING COMMISSION



## **7 MEMBERS**

**Steve Swisher (2018)**  
Chair, Sisters Area

**Dale Crawford (2019)**  
Vice Chair, At-Large

**Jim Beeger (2020)**  
Bend Area

**Les Hudson (2020)**  
At-Large

**Maggie Kirby (2019)**  
Bend Area

**Hugh Palcic (2017)**  
South County

**Susan Tunno (2018)**  
Redmond Area

# Planning Commission

- Appointed by the Board of County Commissioners
- Citizen Involvement Committee (Goal 1)
- Serves the unincorporated area of Deschutes County
- Volunteers
- Powers, Duties, Roles:
  - Encourage and gather public input on land use planning, transportation, economic development, and natural resource issues
  - Evaluate and make recommendations on land use policy & land use code changes to the Board of County Commissioners
  - Carry out comprehensive planning program, using citizen involvement and public hearings and coordinate activities with other jurisdictions, planning bodies and districts
  - Evaluate and make recommendations on Annual Planning Division Work Plan following public hearing(s)
  - Implement the Work Plan – Long Range Planning Projects
- Meeting Schedule: 2<sup>nd</sup> & 4<sup>th</sup> Thursdays each month (check online calendar)



# Planning Commission

## MEMBERS

**Steve Swisher (2018)**  
Chair, Sisters Area

**Dale Crawford (2019)**  
Vice Chair, At-Large

**Jim Beeger (2020)**  
Bend Area

**Les Hudson (2020)**  
At-Large

**Maggie Kirby (2019)**  
Bend Area

**Hugh Palcic (2017)**  
South County

**Susan Tunno (2018)**  
Redmond Area

- No more than 2 members may be engaged in the same kind of occupation, business, trade or profession or be members, officers, or employees of any partnership or corporation that engages principally in buying, selling or developing of real estate for profit
- Term limits: 2 4-year terms or 10 years (if filling a vacancy)
- Be representative of the various geographic areas of the County, as much as possible:
  - 1 member from South County (La Pine/Sunriver area)
  - 2 members from Bend Area
  - 1 member from Tumalo Area
  - 1 member from Sisters Area
  - 1 member from Redmond Area
  - 1 member At-Large

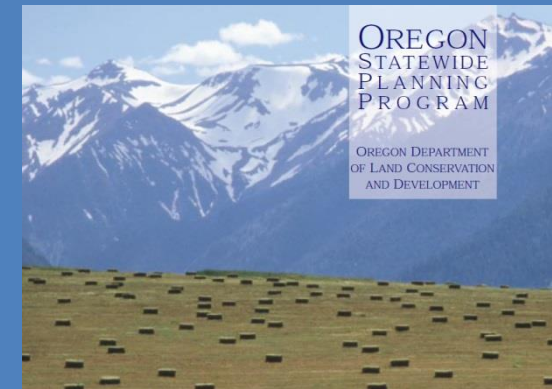
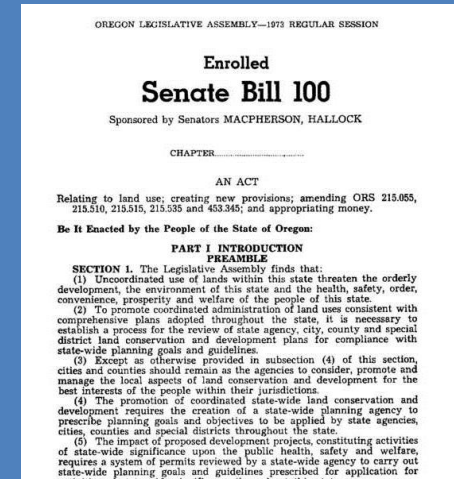
Code states failure to achieve such geographic representation shall not affect the validity of any action taken by the PC



# PLANNING PROGRAM

# Statewide Planning Goals

- Goal 1 Citizen Involvement
- Goal 2 Land Use Planning
- Goal 3 Agricultural Lands
- Goal 4 Forest Lands
- Goal 5 Open Spaces, Scenic & Historic Areas and Natural Resources
- Goal 6 Air, Water and Land Resources Quality
- Goal 7 Areas Subject to Natural Disasters and Hazards
- Goal 8 Recreation Needs
- Goal 9 Economy of the State
- Goal 10 Housing
- Goal 11 Public Facilities and Services
- Goal 12 Transportation
- Goal 13 Energy
- Goal 14 Urbanization
- Goals 15-19 Willamette River Greenway & Coastal Goals



# Land Use Planning Foundation

- **1926 U.S. Supreme Court decision, *Village of Euclid vs. Ambler Realty Co.***

Upholds legality of local zoning powers

- **Senate Bill 100 (1973)**

- Protect farm and forest land
- Citizen involvement
- Statewide Planning Goals
- Cities and counties required to adopt comprehensive plans
- Land Conservation and Development Commission
- Land Use Board of Appeals

- ***Fasano v. Board of County Commissioners of Washington County* (1973)**

- Required zoning to be consistent with comprehensive plans

- **Deschutes County Comprehensive Plan**

- Comprehensive Plan amended in 1979 to comply with Statewide Planning Goals





# County Planning History

- 1965** Zoning ordinance established for part of County.  
Repealed by voters in 1968
- 1970** County adopted first Comprehensive Plan
- 1972** Adopted zoning ordinance that applied  
countywide
- 1979** County updated Comprehensive Plan addressing  
Statewide Goals
- 1981** State approved Comprehensive Plan
- 1992** Farm Study Plan Amendment
- 2000** Regional Problem Solving Plan Amendment
- 2011** Comprehensive Plan Update



Report of Deschutes County  
Long-Range Planning Conference  
for 1968



# Planning Division

## Long Range Planning (Future)

- Developing land use policy & regulations through developing & updating/amending:
  - Comprehensive Plan
  - Area Plans (Chapters of the Comprehensive Plan)
  - Deschutes County Code
  - Special Projects
- Coordinating with cities & agencies on planning projects
- Performing ongoing tasks (population forecasts, monitoring legislation, serving on committees, etc.)

## 2016-17 Projects

- Facilitate adoption of Bend UGB, Code Amendments
- Complete US EPA Brownfield Grant
- Amend Floodplain Zoning
- Address Medical Hardship Dwellings in EFU/Forest Zones
- Coordinate on Bend Airport Issues
- Improve Destination Resort Tracking System
- Historic Preservation Grant
- Non-Resource/Ag Lands

# Deschutes County Planning Program

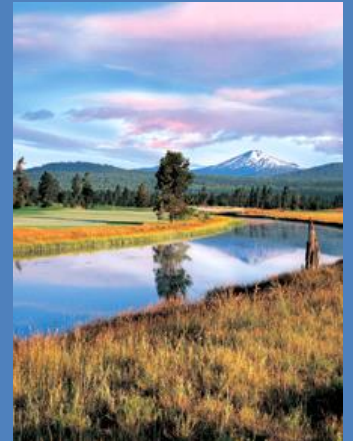
## Current Planning (Implementation)

- Implement Comprehensive Plan and County Code on a daily basis
- Review land use planning applications in rural areas to determine if they comply with County regulations and State laws
- Respond to public inquiries about development proposals
- Review building and septic permits for consistency with land use regulations



# Rural Lands – 3 Categories

- **Resource Lands** ▶
  - Farm & Forest
- **Exception Lands** ▶
  - Rural Residential, Multiple Use Agricultural, Rural Commercial, Rural Industrial, Airport)
- **Unincorporated Communities** ▶
  - Most flexibility in rural areas



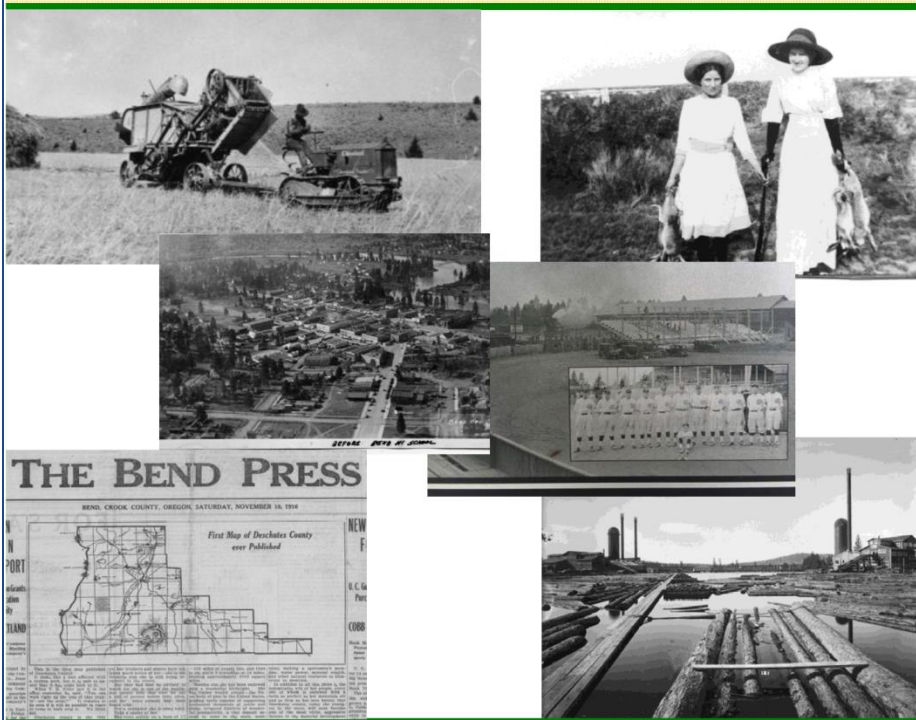




# Services/Projects Directed by Work Plan

- > Developed with public input
- > Based on BOCC Goals & Objectives
- > Performance Measures
- > Community Involvement Report
- > Long Range Planning Depends on Resources Available

## Community Development Department Annual Report and Work Plan



Adopted June 22, 2016

Main Line: 541-388-6575  
Fax: 541-385-1764  
Website: [www.deschutes.org/cd](http://www.deschutes.org/cd)

117 NW Lafayette Avenue  
Bend, Oregon



# Major Accomplishments Past 5 Years

## Agricultural Lands

- **Public Outreach 2014**
- **State to initiate non-resource lands program in 2017**
- **Southern Oregon Regional Pilot Project Completed 2016-17**

## Natural Resources Water

- **Greater Sage Grouse Plan Amendments**
- **Goal 11 Exception**

- Facilitated UGB Amendment Adoptions
- Tumalo, Terrebonne, Newberry Country Community Plans
- Marijuana Regulations
- US EPA Brownfield Grant
- Historic Preservation Strategic Plan, Story Map
- Natural Hazards Code Audit
- Code Enforcement Text Amendment



DESCHUTES COUNTY  
TRANSPORTATION SYSTEM PLAN UPDATE



2010 - 2030

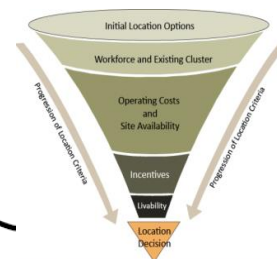


Newberry Country



Destination Resort Map Amendments

## Central Oregon Large Land Need Project



South County  
Local Wetland  
Inventory

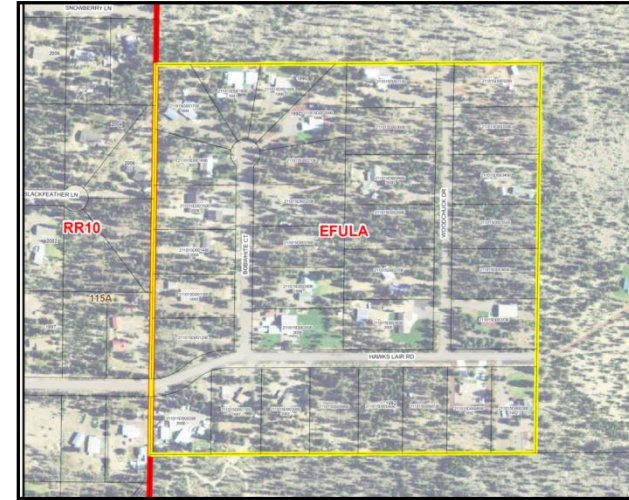






# 2017~18 DRAFT Projects

- **Initiate Agricultural Lands Re-Evaluation**
- **Redmond Large Lot Industrial UGB Amendment**
- **Groundwater Protection**
- **Community Plan Updates**
- **Bend Airport Master Plan Implementation**
- **Historic Preservation Grant Implementation**
- **Goal 5 Inventory Update**
- **Natural Hazards Code Amendments**
- **2017 Legislative Session Code Amendments**



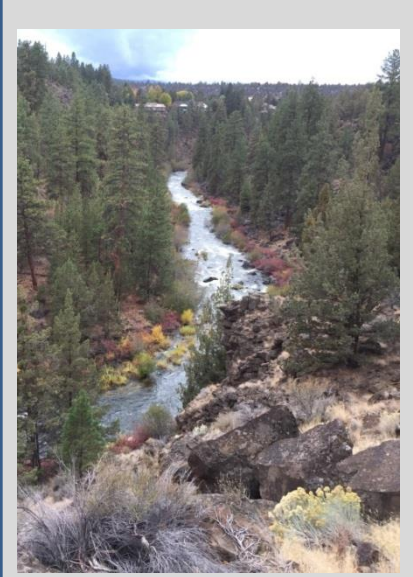


# PUBLIC COMMENTS



# Themes for the Future

- **Managing Population Growth & Demographic Changes**
- **Addressing Affordable Housing**
- **Preserving & Protecting Natural Resources, Water Quality & Quantity**
- **Improving Transportation Systems**
- **Anticipating New Economic & Agricultural Opportunities**
- **Maintaining & Enhancing High Quality of Life**
- **Reducing Natural Hazard Risks, Preparing for Disaster Resilience**
- **Planning for Healthy & Safe Communities**
- **Regional Planning, Coordination, Partnerships**
- **Expanding Recreational Opportunities**
- **Facilitating Access to Health Care & Higher Education**







# Public Comments

- **We invite you to engage with the Planning Commission at this and future meetings to share your perspectives on:**
  - Projects before the Commission, and
  - Any other planning issue you believe the County should address.
- **Please share your thoughts on potential future long range planning projects that might benefit our County.**





# PLANNING PROGRAM OVERVIEW

Spring 2017

