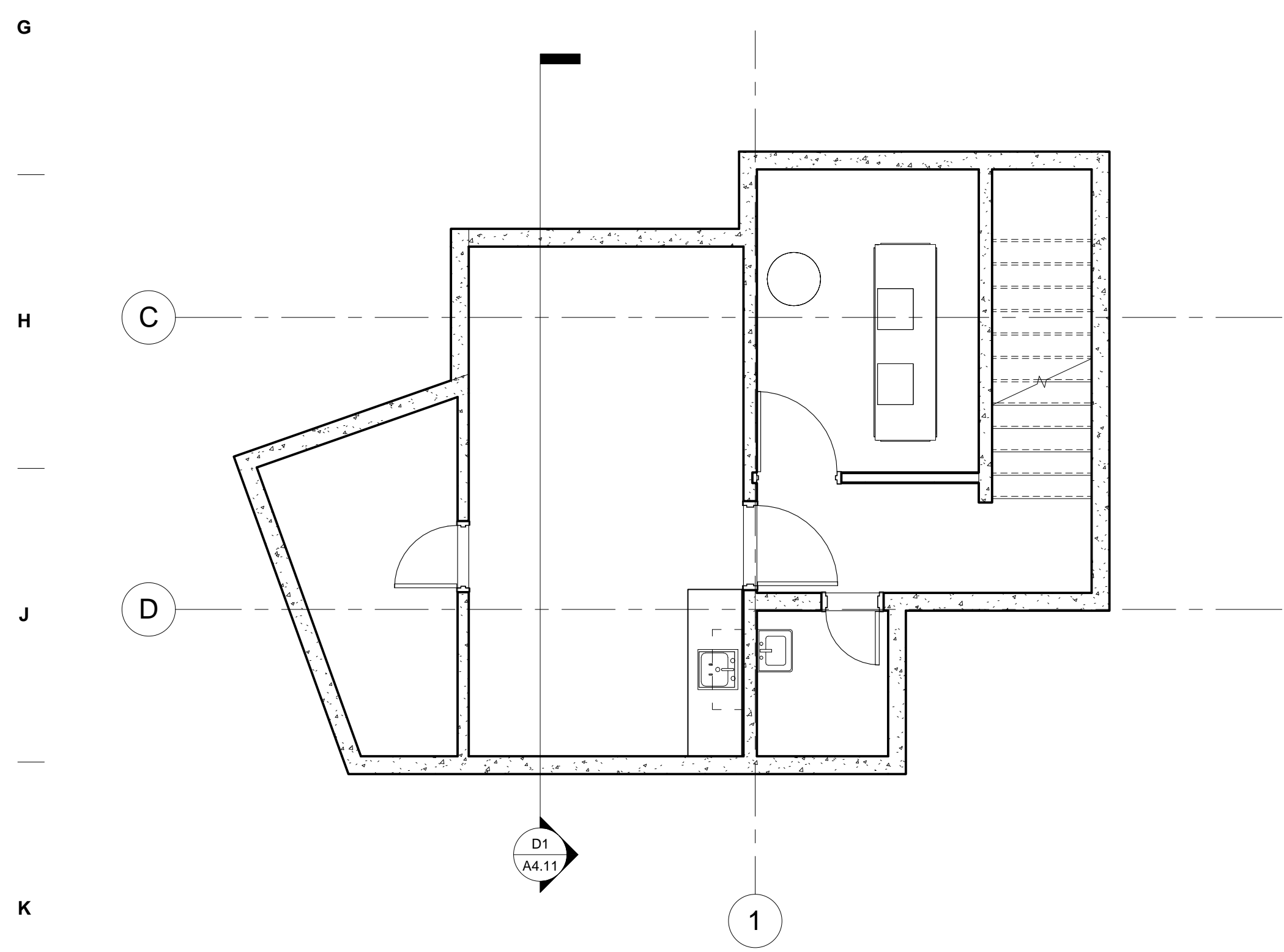


MATERIALS KEY

ROOM LEGEND

- 13 STORAGE
- 101 JUVENILE WAITING ROOM
- 103 ADULT WAITING ROOM
- 104 ADULT UA BATHROOM
- 108 JUVENILE
- 109 SMALL CONFERENCE
- 110 LARGE CONFERENCE
- 122 MECHANICAL ROOM
- 125 STAFF WORK ROOM
- 126 IT CLOSET
- 127 JUVENILE BATHROOM
- 128 JUVENILE UA BATHROOM
- 129 IT CLOSET
- 130 EMPLOYEE WOMEN
- 131 EMPLOYEE MEN
- 132 ADULT HALLWAY
- 135 STAFF WORK ROOM
- 136 STAFF BREAK ROOM
- A0 JUVENILE WAITING ROOM
- A1 JUVENILE OFFICE
- A2 JUVENILE OFFICE
- A3 JUVENILE OFFICE
- A4 JUVENILE OFFICE
- A5 ADULT OFFICE
- A6 ADULT OFFICE
- A7 ADULT OFFICE
- A8 ADULT OFFICE
- A9 ADULT OFFICE
- A10 ADULT OFFICE
- A11 ADULT OFFICE
- ADULT OFFICE #5
- OFFICE #5
- J0 JUVENILE WAITING ROOM
- J1 ADULT OFFICE
- J2 ADULT OFFICE
- J3 ADULT OFFICE
- J4 ADULT OFFICE
- J5 JUVENILE WAITING ROOM
- R1 RECEPTION
- R2 ADULT WAITING ROOM
- R3 JUVENILE HALLWAY
- R4 ADULT HALLWAY
- R5 ADULT WAITING ROOM
- R6 RECEPTION
- R7 ADULT BATHROOM
- R8 JUVENILE BATHROOM
- R9 ADULT WAITING ROOM
- R10 JUVENILE WAITING ROOM
- R11 JUVENILE WAITING ROOM
- R12 ADULT WAITING ROOM
- R13 ADULT HALLWAY
- R14 JUVENILE HALLWAY
- R15 EMPLOYEE SHOWER
- R16 EMPLOYEE MEN
- R17 JANITOR
- R18 ADULT HALLWAY
- R19 ADULT HALLWAY
- R20 RECEPTION
- S1 SUPERVISOR OFFICE

FLOOR PLAN LEVEL 1
 Scale: 1/4" = 1'-0" @ FULL SIZE



FLOOR PLAN BASEMENT
 Scale: 1/4" = 1'-0" @ FULL SIZE

BUILDING SQUARE FOOTAGE

1ST FLOOR = 4,844 SQ FT
 BASEMENT = 450 SQ FT
 TOTAL = 5,294 SQ FT

CONSTRUCTION DOCUMENT SET

**DESCHUTES COUNTY
UNGER BUILDING**

DESCHUTES COUNTY

BLRB architects

TACOMA 1250 Pacific Ave. Spokane, WA 99201 509.427.5599	SPOKANE 205 W Riverside Spokane, WA 99201 509.321.5888	PORTLAND 100 SW 10th Avenue Spokane, WA 99201 509.321.5888	BEND 414 SW Columbia Spokane, WA 99201 509.321.5888
--	---	---	--

Drawing Title:
OVERALL FLOOR PLANS

Date: 08-08-2014	Drawn By: DTL
Revised: 00	Project No. 14.34B
Stamp	Sheet No.

A2.01

of

BLRB ARCHITECTS, P.S.

8/8/2014 2:39:29 PM