

# Central Oregon Pain Standards Task Force

For  
The Public Safety Coordinating Council

---

KIM SWANSON, PH.D.  
CHAIR PAIN STANDARDS TASK FORCE



## How to Contact Me

---

Kim Swanson, Ph.D.

[www.copainguide.org](http://www.copainguide.org) under "contact us"



# Acknowledgements

Central Oregon Health Council

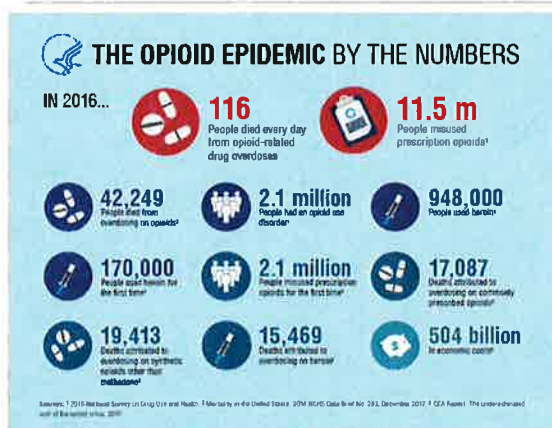
Pacific Source Community Solutions



Amesol



## Background: Opioid Prescribing and Overdose Deaths are a State and National Emergency



The opioid epidemic has been called the worst drug crisis in American history. Death rates now rival those of AIDS during the 1990s, and with overdoses from heroin and other opioids now killing more than 27,000 people a year.”

References:

- 1) <http://www.pbs.org/wgbh/frontline/article/how-bad-is-the-opioid-epidemic/>



## Background: How has Oregon Been Effected?

- Oregon ranks number 4 in the nation for non-medical pain reliever use within the total population aged 12 or older.
- Oregon leads the country in seniors (age 65+) hospitalized for opioids.
- Prescription drug abuse is **39 percent higher** than the national average.
- In 2013, doctors prescribed opioids to almost **1 in 4 Oregonians**.
- From 2000 to 2013, the **death rate from opioid & heroin overdose quadrupled**
- In 2016 Oregon witnessed a 15% decrease in prescribed opioids to Oregonians due to multiple efforts.

References:

- 1) <http://public.health.oregon.gov/DiseasesConditions/InjuryFatalityData/Documents/oregon-drug-overdose-report.pdf> Oregon Prescription [Accessed on September 16, 2015]
- 2) <http://arcmm.org/wp-content/uploads/2015/02/ngo-Task-Force-Report.pdf> [Accessed on September 16, 2016]



## PSTF



### Vision

Working collaboratively to improve the health and well being of chronic or persistent non-cancer pain patients in Central Oregon.

### Mission

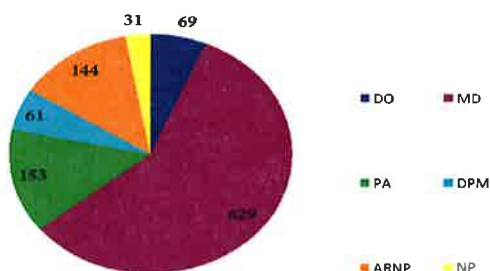
Create a health care system that embodies compassionate, patient-centered, holistic, and evidence-based chronic or persistent non-cancer pain care.



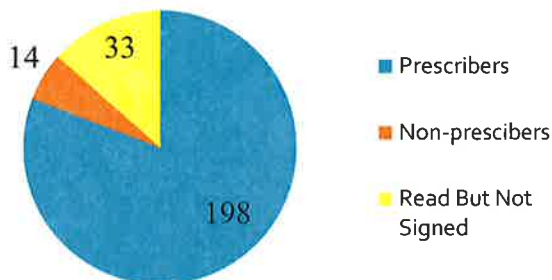
# PSTF 2017 Aims

Provider acceptance of Community Wide Safer Prescribing Standards.: Endorsement Letter

Tri-County Total Count of Providers



Tri-County Total Count of Providers



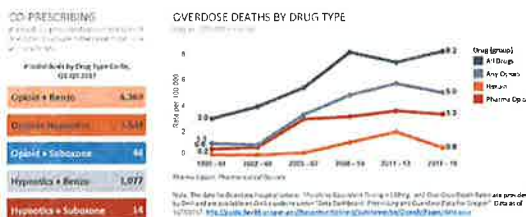
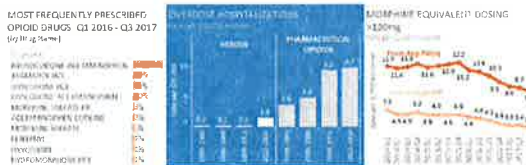
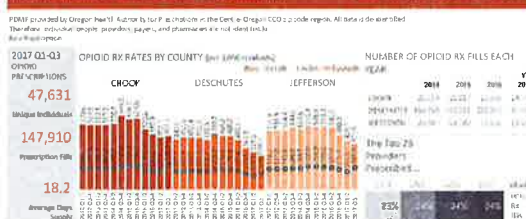
# PSTF 2017 Aims

2) Provider consistency in safer prescribing practices as measured by Oregon Prescription Drug Monitoring Program data.

- o PDMP dash board updated quarterly (see <http://www.copainguide.org/apps/uploads/2017/12/PDMP-Dashboard-Q3-2017.pdf>)
- 2015 compared to 2016 there were 25,069 less opioid prescription fills = 12% decrease
- Morphine Equivalent dosing >120 mg from any fill has demonstrated a steady decline and decreased by 80% from 2014 Q1 - 2016 Q4.
- Morphine equivalent dosing >120 mg from a single fill demonstrated a steady decline and decreased by 64% from 2014 Q1 - 2016 Q4.



## OPIOIDS IN CENTRAL OREGON

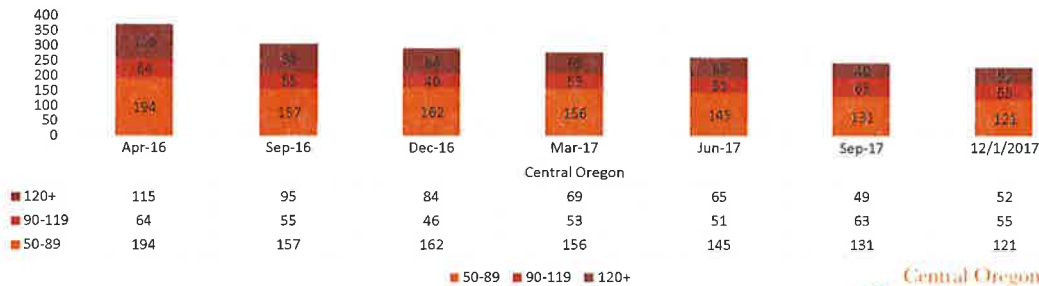


# PSTF 2017 Aims

## Provider acceptance of Community Wide Safer Prescribing Standards.

- Opioid PIP Updates: Q4 2017

Number of Members Receiving Chronic Opiates by MED in 12 mos preceeding date listed - Central Oregon CCO data source - PacificSource claims



## PSTF 2017 Aims: Provider acceptance of Community Wide Safer Prescribing Standards

### Benzodiazepines and Opioids

DEN: Medicaid members age 12+ that are above 120mg MED for 30+ days

NUM: Members also on 120mg+ MED and on benzos at any time during the measurement period

Members also on benzos at any time during the measurement period

CCO	NUMER	DENOM	RATE
Central Oregon	31	72	43.1%
Gorge	4	27	14.8%

### Benzodiazepines and Opioids

DEN: Medicaid members age 12+ that are above 90-119mg MED for 30+ days

NUM: Members also on 90-119mg MED and on benzos at any time during the measurement period

Members also on 90+ MED and on benzos at any time during the measurement period

CCO	NUMER	DENOM	RATE
Central Oregon	19	58	32.8%
Gorge	5	17	29.4%

### Benzodiazepines and Opioids

DEN: Medicaid members age 12+ that are above 50-89mg MED for 30+ days

NUM: Members also on 50-89mg MED and on benzos at any time during the measurement period

Members also on 50+ MED and on benzos at any time during the measurement period

CCO	NUMER	DENOM	RATE
Central Oregon	49	128	38.3%
Gorge	8	28	28.6%

## PSTF 2017 Aims

---

### 1) Provider acceptance of Community Wide Safer Prescribing Standards.

- Dispose of Unused Medications
- Bring unused medications to secure medication drop-off boxes
- Please go to The PSTF's Central Oregon Prescription Drug Disposal Units and Locations our website and can be found here: <http://www.copainguide.org/patients-families>



## PSTF 2017 Aims

---

### 2) Provider consistency in safer prescribing practices as measured by Oregon Prescription Drug Monitoring Program data.

- 64% of Central Oregon Providers with a DEA number are registered to use the PDMP
- HB 4143 has language that mandates all providers register with PDMP by July 1, 2018



## PSTF 2017 Aims

---

### 3) Provide 3 Provider Educational Events in 2017

- Central Oregon Mid-level Providers: MAT in Opiate Use Disorder—January 22, 2017
- Behavioral Health Chronic Pain Learning Collaborative
  - Chronic Pain as a Psychological Variable in DSM-5 – April 7, 2017
  - Chronic Pain & Psychological Co-Morbidities That Impact Prognosis and Course of Medical Treatment – June 23, 2017
  - Risk Mitigation in Chronic Pain Management and the BHC's Role – September 22, 2017
  - Role of Family in Chronic Pain Management – December 15, 2017
- Second Annual Chronic Non-Cancer Pain 101 Workshop—October 20, 2017

(All video and slide content can be found at <http://www.copainguide.org/provider-resources/>)



## PSTF 2017 Aims

---

### 4) Increase number of chronic pain treatment programs

- Living well with Chronic Pain
  - 2017
    - 56 participants have completed Living Well with Chronic Pain
    - Jefferson County
    - Deschutes County
    - Crook County cancelled due to low enrollment



## PSTF 2017 Aims

- 4) Increase number of chronic pain treatment programs
  - Implementation of OHP HERC Low Back Pain Guidelines
    - **There has been an increase in requests for non-invasive therapies**

	PT/OT count	Average PT/OT per month	Acupuncture count	Average acupuncture per month	Chiro count	Average chiro per month	Massage count	Average massage per month	Combined services	Average for combined services	Percent increase in combined services from 1Q2106
Q1 2016	1212	404	174	58	102	34	5	2	1493	498	
Q2 2016	1411	470	171	57	90	30	4	1	1676	559	89
Q3 2016	1539	513	306	102	335	112	3	1	2183	728	68
Q4 2016	1498	499	253	84	288	96	29	10	2068	689	72
Q1 2017	1639	546	283	94	290	97	65	22	2277	759	66
Q2 2017	1703	568	353	118	241	80	70	23	2367	789	71
Q3 2017	2169	723	297	99	222	74	81	27	2769	923	78
Q4 2017	1623	541	335	112	289	96	81	27	2328	776	97



## PSTF 2017 Aims



- 5) Create strategies for patient and community education by July 2017.
  - Take Meds Seriously



Take **Meds** Seriously Oregon.org





## PSTF 2017 Aims

### 6) Decrease Number of Opioid-Related Overdose Deaths

- Deschutes County reversed 17 overdoses last year because they carry Naloxone
- 2017 RFP to all regional Law Enforcement Agencies
  - Bend Police Department \$1,421.25



## Questions & Answers

