



For Recording Stamp Only

Deschutes County Board of Commissioners
1300 NW Wall St., Bend, OR 97703-1960
(541) 388-6570 - Fax (541) 385-3202 - www.deschutes.org

MINUTES OF WORK SESSION

DESCHUTES COUNTY BOARD OF COMMISSIONERS

MONDAY, MAY 23, 2016

Present were Commissioners Alan Unger, Tammy Baney and Anthony DeBone. Also present were Tom Anderson, County Administrator; Erik Kropp, Deputy County Administrator; Judith Ure, Administration; Nick Lelack and Eric Mone, Community Development; Christina Partain, Finance; and eight other citizens. No representatives of the media were in attendance.

Chair Unger opened the meeting at 1:30 p.m.

1. ODOT Update

Present from the Oregon Department of Transportation were Gary Farnsworth (Area Manager), Bob Bryant (Region Manager), Amy Pfeiffer (Planning/Environmental Manager), Della Mosier (Interim Area Manager), and Jim Brown (QA Coordinator), who presented a report on projects that will affect Deschutes County.

- South end of Bend: A raised concrete median creating a physical barrier separating the north bound and south bound lanes is planned. They are working with a contractor in order to have both lanes open by Friday afternoons, with a one-year contract to install the median barrier with an opening for the High Desert Museum entrance.

- Lava Lands Regional Trail System: This is a concept for active mode of transportation using one's own body for movement. (*A conceptual map from the U.S. Forest Service is attached to the record.*) A Federal Lands Access Program grant is being used for this project. ODOT has discussed this partnership project with Bend Park & Recreation and OSU-Cascades.
- Intersection of U.S. Highway 97 at Century Drive: This project is in development, but no construction funds are secured at this time. They are considering a potential FLAP grant application and working with the Forest Service.
- South County/La Pine projects, U.S. Highway 97 at Wickiup Junction: Photos of a Pine Crest vicinity map were reviewed, showing the reconstruction of Huntington Road and Deer Run Lane. Also reviewed was the Street Scape for U.S. Highway 97 at First Street, La Pine.
- Bend to Redmond corridor safety planning: ODOT is in the early phases of planning for the next two to three years. This project would require working with the County to consider a raised median. This is a companion project towards developing and improving safety standards. A frontage road and J-turns will be a part of the plan.
- Hunnell Road: A proposal on this development is underway. Safety issues at the intersection of Old Bend Redmond Highway and Highway 20 are also being considered.
- Tumalo: An environmental assessment of the community of Tumalo, and associated safety concerns, may involve an undercrossing to connect the community.
- Noise issues: A recent noise permit was submitted relating to the Lava Butte project, due to the potential of night operations posing a concern for the public. ODOT will continue work towards public awareness for upcoming projects.

2. Consideration of Business Loan Request

Jon Stark of EDCO, Travis Browning of REDI, and Judith Ure, Management Analyst explained that PCC Schlosser has approximately 340 employees and manufactures titanium castings for the medical and aviation industries. This is the first time they have applied for the forgivable loan fund.

The business needed additional space and relocated to a building on 9th Street that has been vacant since 2007. The company has local managers and leadership, and is a Fortune 500 Company. They are committed to hiring 25 new employees, at an average annual wage of \$45,615 with an additional benefits package. They are requesting a loan amount of \$50,000.

All Commissioners supported the business loan request. Questions were raised on the term of the lease; Mr. Stark will send that information to the Board. This is the company's fourth occupied building.

BANEY: Move approval of a Forgivable Loan Request from PCC Schlosser in the amount of \$50,000.

DEBONE: Second.

VOTE: BANEY: Yes.

DEBONE: Yes.

UNGER: Chair votes yes.

3. Update regarding Local Schools.

Shay Mikalson, Bend-La Pine Schools Superintendent, reported the school district has increased in students by 400 from last year. The challenges the school district face encompass design space for learning environments. There is no average student, and to have the best design for the students, adjustments on design are necessary. The challenge is to recognize the obvious: the learning profiles of the students. Mr. Mikalson spoke about the pride he has in his own children, and with those in the school system. The Bend-La Pine School District is the fifth largest in the state. The Commissioners suggested a possible program to mentor students to help them get to a career stage.

4. Discussion regarding Support for Benevolent Organization Foodservice Licenses.

Eric Mone, Environmental Health, reported on the benevolent organization foodservice licenses. The list has grown from 17 to 22. Mr. Mone is requesting a general fund transfer of \$15,407. He noted that 90% of the Environmental Health Division's budget is fee based.

BANEY: Move approval of a transfer of \$15,407 in Fiscal Year 2015-2016 to Deschutes County Environmental Health to subsidize foodservice licensure administration, and two inspections per year for benevolent organizations and governmental entities.

DEBONE: Second.

VOTE: BANEY: Yes.

DEBONE: Yes.

UNGER: Chair votes yes.

5. Finance Update.

This item will be addressed at the May 25 work session.

6. Review of Fee Schedule.

Christina Partain, Finance Department, compiled departments' requests for changes to the fee schedule. She noted the following changes. The general fund had one deletion; the Clerk added research fees and recording access fees. Fair & Expo was not on the county fee schedule in the past and, based on an audit recommendation, are now to be included. The Health department changed the fee calculations from actual cost of service and FTEs, and there are always vacancies, public health mandated services, and actual cost of service.

The Sheriff's Office's districts moved from being County service districts to fee schedules, based on revenue generated through taxes. The Solid Waste department deleted a fee. The tax collector made an adjustment due to a change in ORS and actual cost of service. Community Development has updated its fee schedule structure for building and planning fees.

The fee changes for building and planning were based on the fee study conducted last fall, as well as comparisons to other jurisdictions, applications, justification of fees, the level and costs of service, and an increase in land use appeals. Based on projections, the department is looking at adding staff. Discussion also included anticipated fees for marijuana licensing, concerns regarding hazardous materials, and an anticipated increase in code enforcement issues. Also discussed was the department's assignment to the City of Sisters. The fee structure will be reviewed during budget week.

7. Consideration of a Grant Application for Oregon Health Authority Funding for Staffing to Assist Potential Oregon Health Plan Clients.

This item will be addressed at a future meeting.

8. Other Items

Nick Lelack, Community Development Director, noted the proposed ordinances for marijuana did not capture the lot size and canopy size, and there is now an Exhibit J to make those corrections.

Commissioner Baney received a letter from the wellness review panel of Cascades East asking for support for applications for federal transit dollars to help with non-emergency transit costs.

BANEY: Move approval of signature of a letter of support for Cascades East for the 'rides to wellness' grant.

DEBONE: Second.

VOTE: BANEY: Yes.

DEBONE: Yes.

UNGER: Chair votes yes.

Commissioner Baney also received a letter from the Bethlehem Inn requesting a letter of support for their request for funding through the Affordable Housing Program.

BANEY: Move approval of Chair signature of a letter of support.

DEBONE: Second.

VOTE: BANEY: Yes.

DEBONE: Yes.

UNGER: Chair votes yes.

9. Adjourn.

Being no further discussion, the meeting adjourned at 4:18 p.m., at which time the Board went into executive session under ORS 192.660(2)(d), labor negotiations.

APPROVED this 22nd Day of June 2016 for the
Deschutes County Board of Commissioners.

Alan Unger

Alan Unger, Chair

Tammy Baney

Tammy Baney, Vice Chair

ATTEST:

Bonnie Baker

Recording Secretary

Anthony DeBone

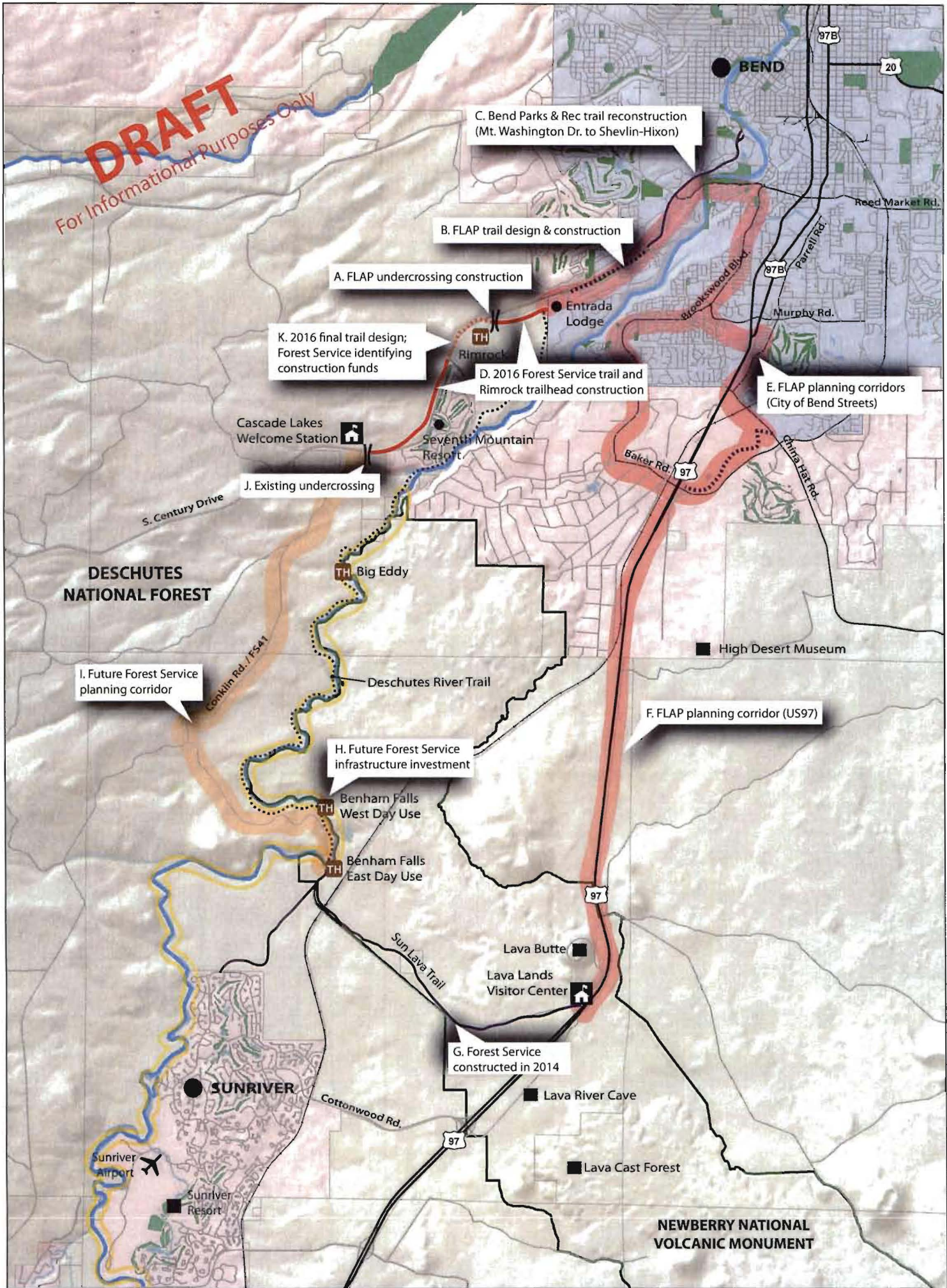
Anthony DeBone, Commissioner

DESCHUTES COUNTY BOARD OF COMMISSIONERS

ODOT REGION 4 - WORK SESSION TOPICS

Monday, May 23rd, 2016

- | | | |
|----|-----------------------------------------------------------------------------------------------|-----------------|
| 1. | Lava Butte/Sunriver/Century Drive/Vandevert Area –
Potential <i>FLAP</i> Projects | Della Mosier |
| 2. | South County/La Pine – Wickiup / Pinecrest / La Pine
Streetscape / Proposed Transit Center | Gary Farnsworth |
| 3. | US 97 Bend-Redmond Safety / Hunnell Rd / Planning topics | Gary |
| 4. | US 20 Tumalo Safety | Della/Gary |
| 5. | List of other Current/Pending Projects | Gary |
| 6. | Noise permitting/variances process | Gary |
| 7. | Other topics of interest, Action Items.... | All |



LEGEND

 FLAP planning corridor	 Existing paved trail
 Non-FLAP planning corridor	 Existing soft surface trail
 Parks/golf courses	TH Trailhead
 Public land	 Point of interest
 Upper Deschutes Wild & Scenic River Corridor National monument boundary	
 Existing/proposed undercrossing	
 Planned trail	

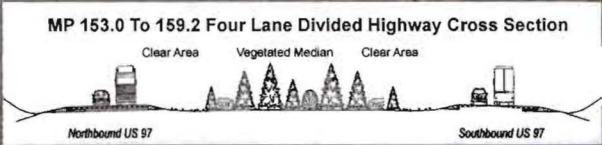
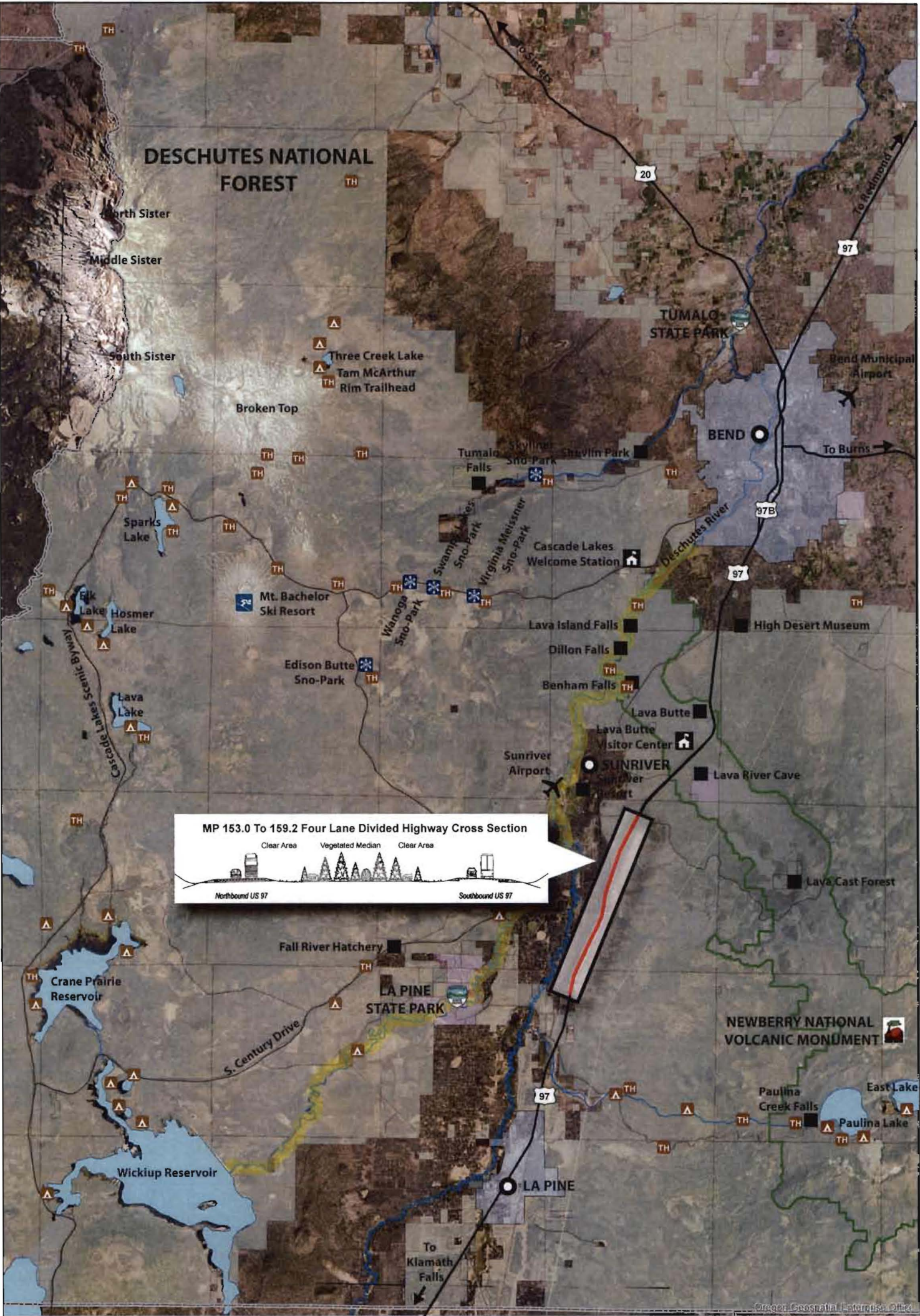
Lava Lands Regional Trail System Conceptual Map

N

0 1 2 Miles

DISCLAIMER:
This product is for informational purposes only and may not have been prepared for or be suitable for legal, engineering or planning purposes. Users of this information should review or consult the primary data and information sources to ascertain the usability of the information.

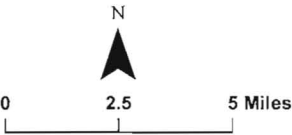
Map Date: May 18, 2016
Source: Oregon Department of Transportation



LEGEND	
	Project Boundary
	FLAP Project
	State Highway
	Federal Land
	State Land
	City Boundary
	Upper Deschutes Wild & Scenic River Corridor
	Campground
	Trailhead
	Area of Interest
	Ski Resort
	Sno Park
	National Monument Boundary

U.S. 97: S. Century Drive to U.S. Forest Service Boundary

DISCLAIMER
This product is for informational purposes only and may not have been prepared for or be suitable for legal, engineering or surveying purposes. Users of this information should verify or consult the primary data and information sources to determine the usability of the information.



Map Date: May 12, 2016
Source: Oregon Department of Transportation

South County/La Pine Projects

Wickiup Jct., Pinecrest, La Pine Streetscape & Proposed Transit Center



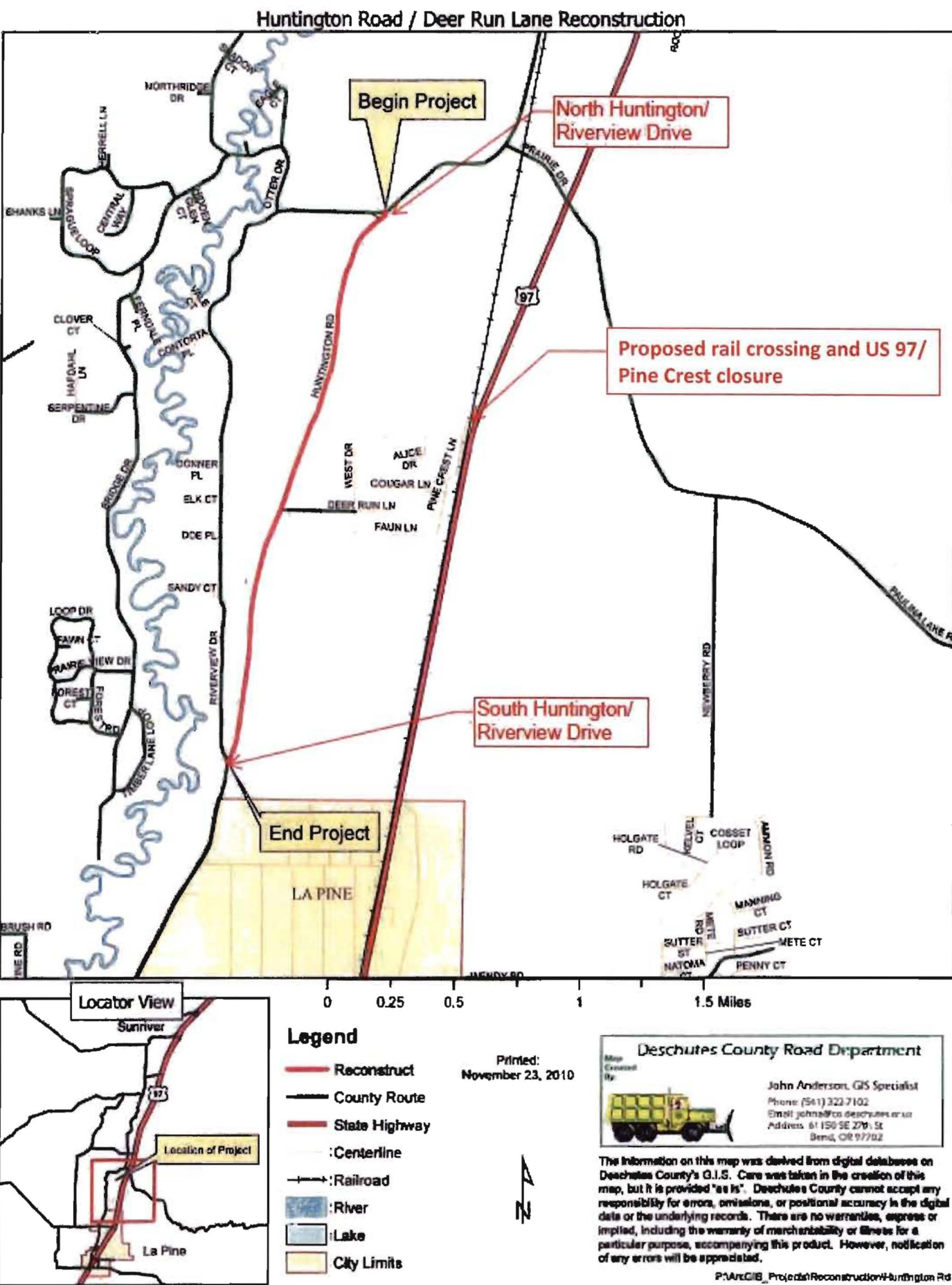
US97 @ WICKIUP JUNCTION

FEBRUARY 2014

"FOR INFORMATION ONLY"
SUBJECT TO CHANGE
USE AT YOUR OWN RISK



Pine Crest Vicinity Map



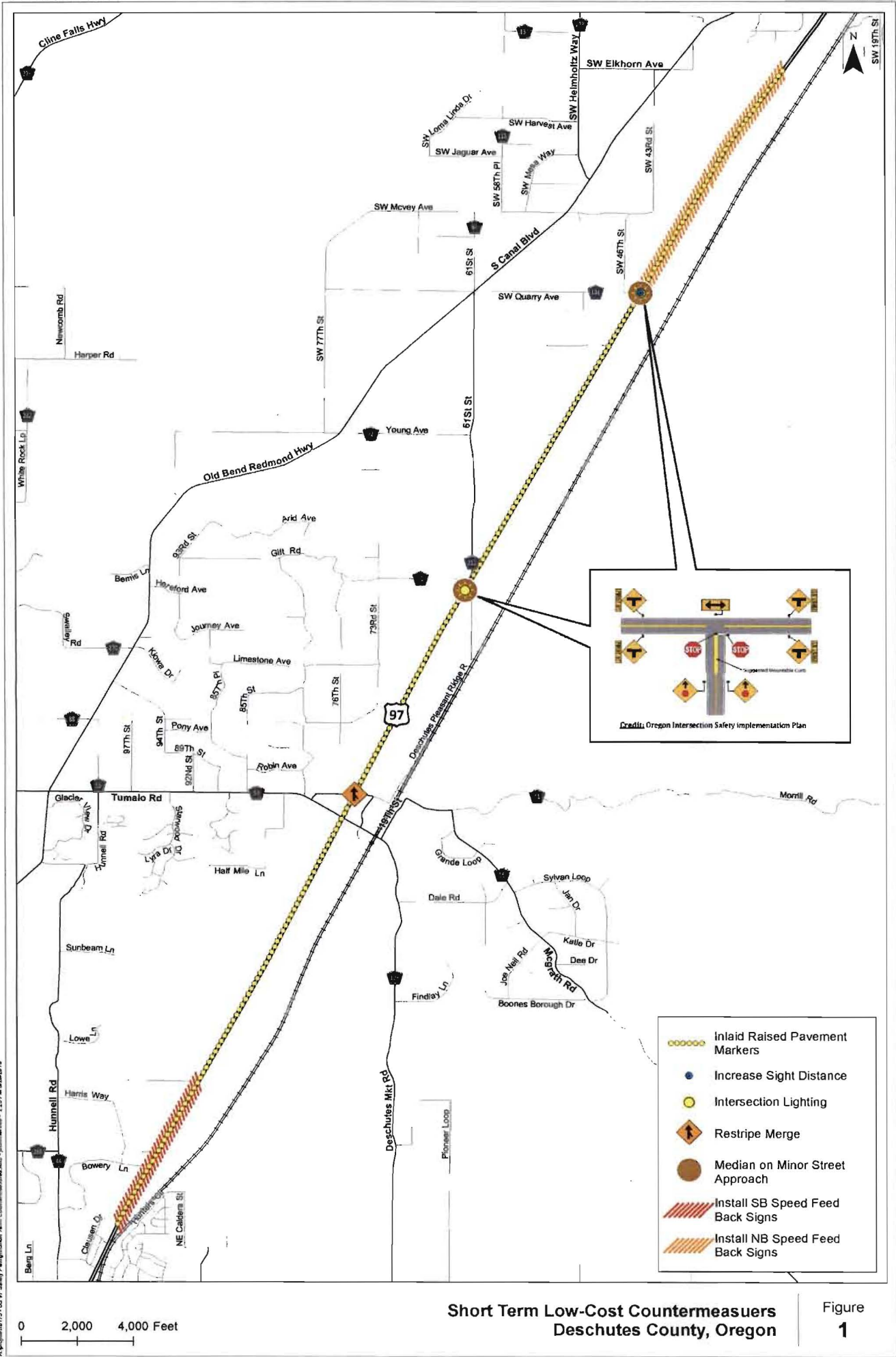
US 97: 1st Street La Pine Streetscape Project

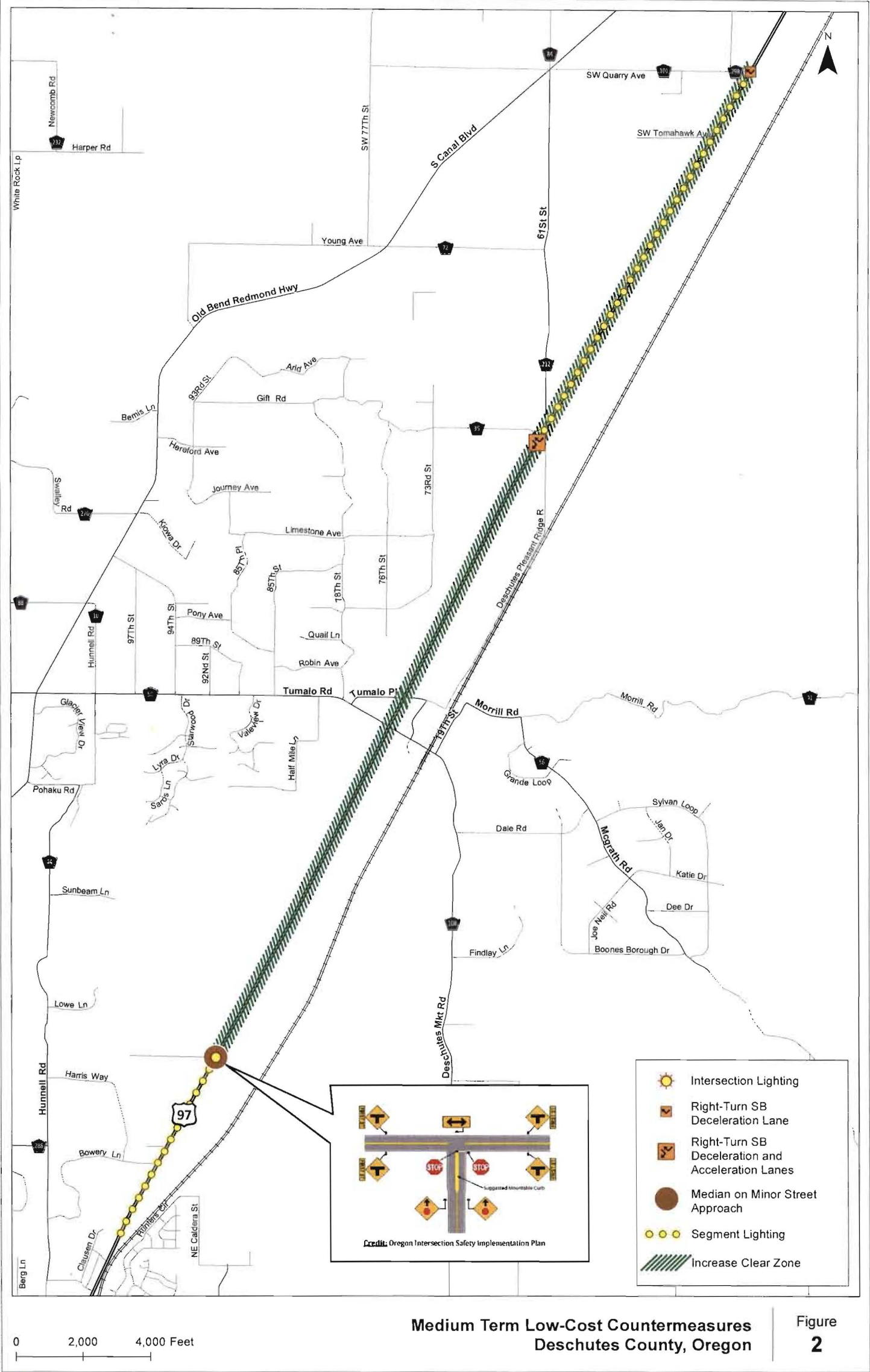


Bend-Redmond Safety & Hunnell Rd. Planning Topics

US 97 Safety Assessment

May 2015

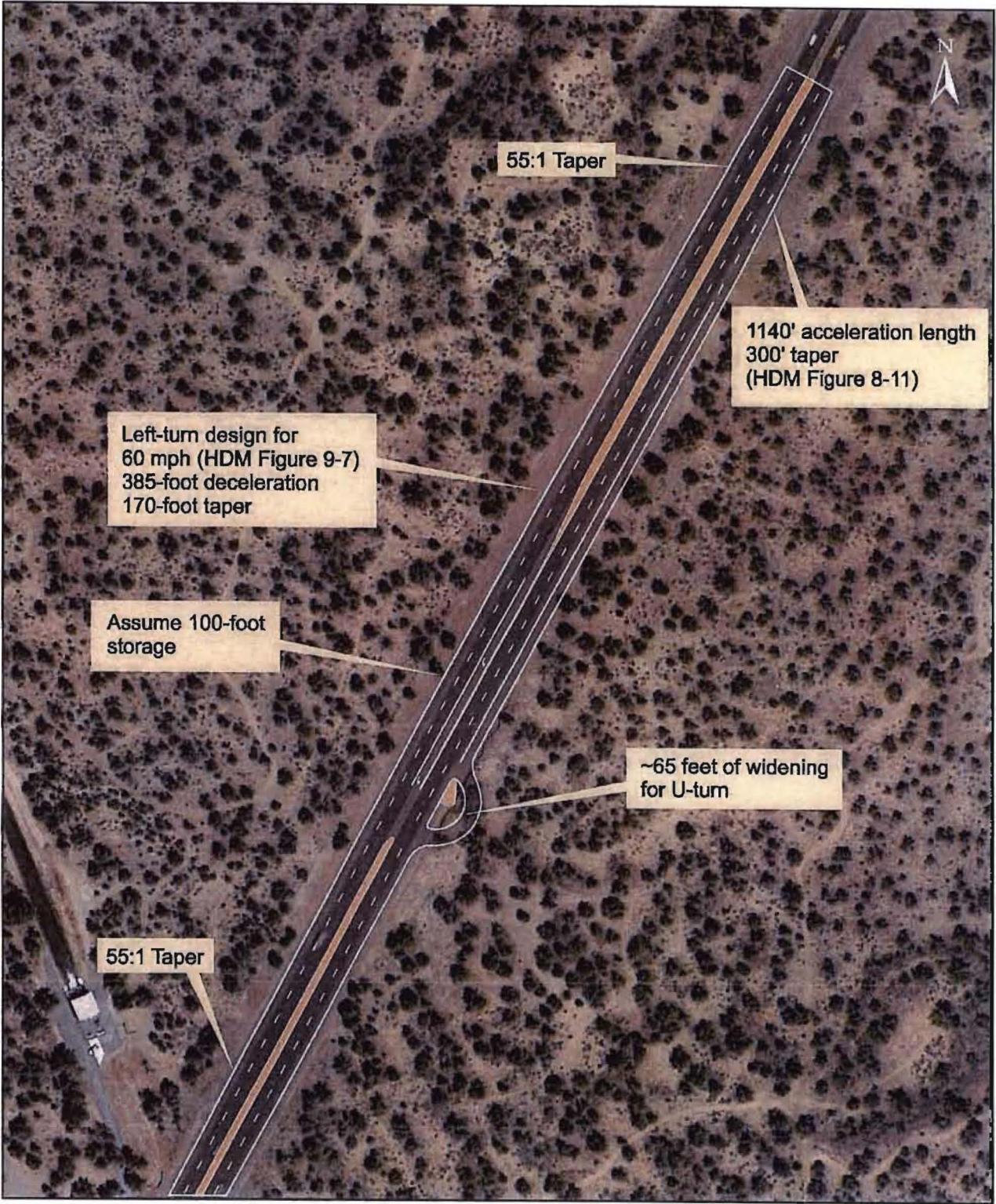




US 97 Bend – Redmond Safety, J-Turn Concept

US 97 Safety Assessment: Mile Point 124.40-133.39

June 2015



H:\profile\18175 - US 97 Safety Plan\dwg\figure\18175_figure 01.cdr

J-Turn Concept
Deschutes County, Oregon

Figure
E-1

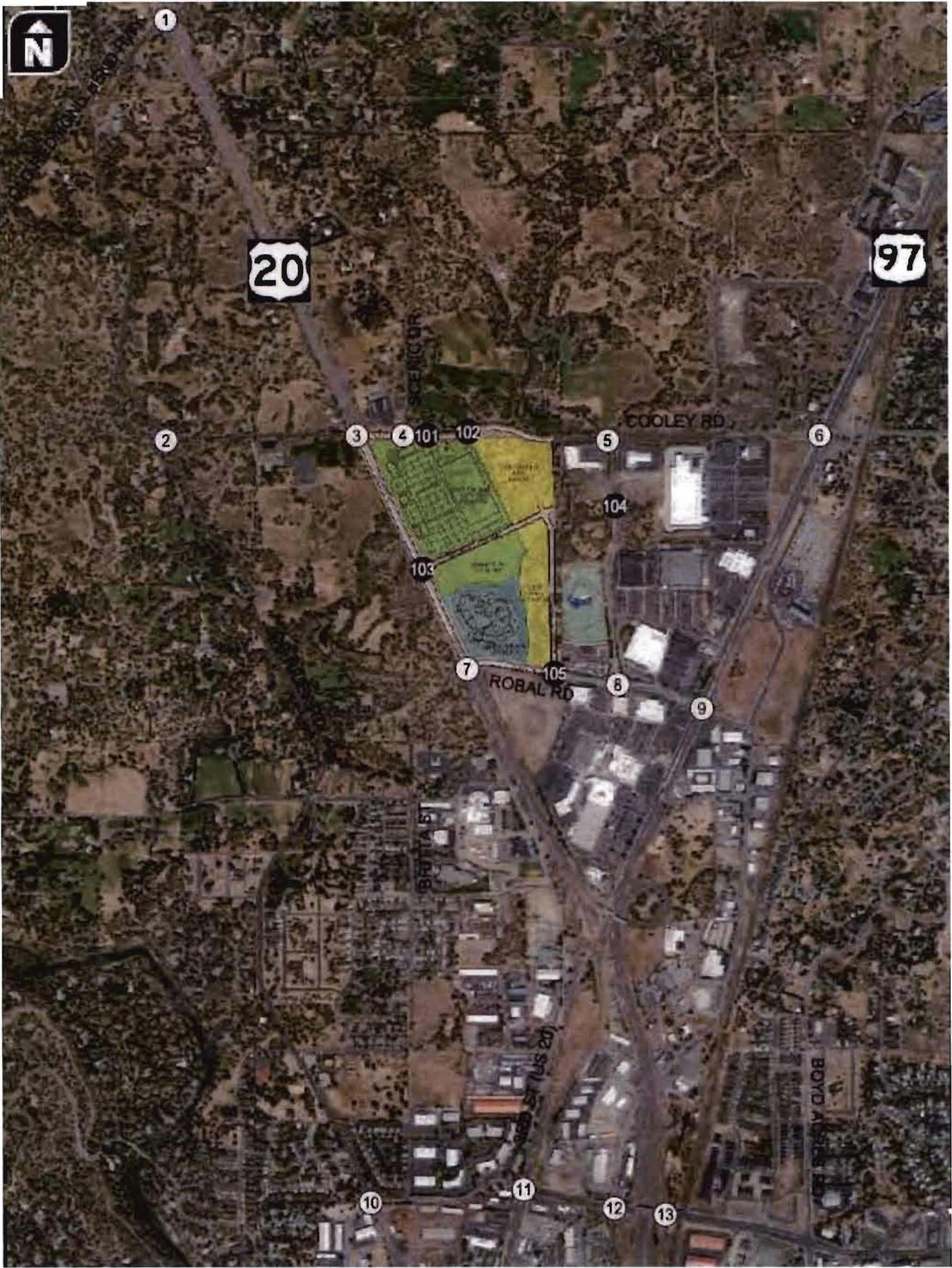
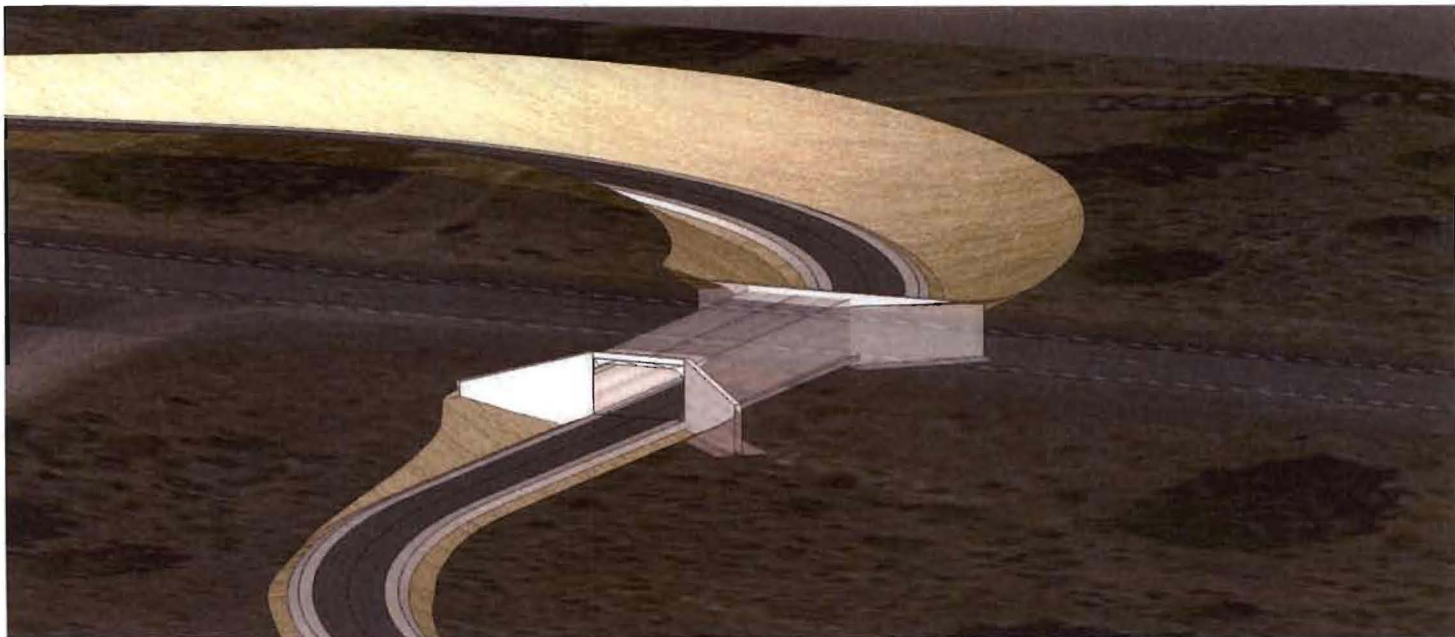
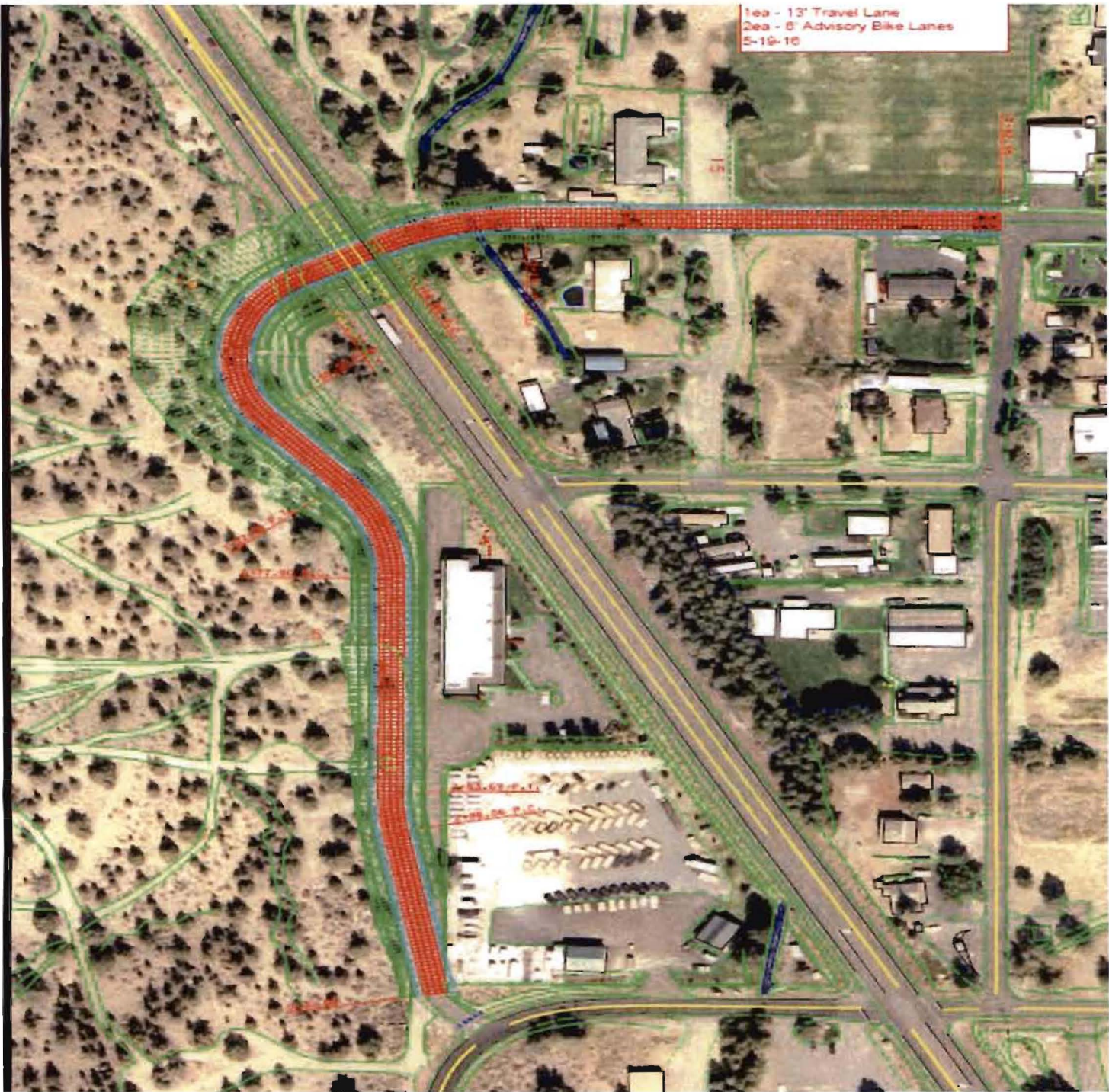


Figure 2-2. Study Intersections.

US 20 @ Tumalo Safety Planning



Additional Current/Pending Projects



**BRIEFING PAPER FOR PCC Schlosser
Request for Deschutes County Forgivable Loan**

Company Request: \$50,000

EDCO Recommendation: \$50,000

Proposed Job Creation within 24 months of January 5, 2016: 25 new employees

Average Pay for New Employees (all positions, excluding commissions): \$45,615

Industry: Specialty Manufacturing

Website: www.pccstructurals.com

Company Local Leadership:

Keith Covlin, Group Vice President – 18 years with Schlosser

Lisa King, Controller – 27 years

Marc Christman, Facilities Manager – 14 years

Josh Lau, Process Engineering Manager – 15 years

Mike Hines, Production Engineering Manager – 32 years

Company Background:

PCC Schlosser, a division of Precision Castparts, is an investment casting facility specializing in titanium products serving the aviation/aerospace, military and medical device industries around the world. A publically traded and Fortune 500 company, they produce high quality, precision specification parts with extremely low tolerances through a complex process of mold design, investment casting, finish and radiographic validation.

At the time of application the company employed 335 people at its Redmond facility, which has exceeded capacity. In order to meet further demand from their customers, the company will be adding much needed capacity that will bring long term family wage jobs to Deschutes County. PCC Schlosser has leased 35,000 square feet of additional warehouse and manufacturing space and will hire 25 employees at an annual average wage of \$45,615. They plan to relocate and install new manufacturing equipment and complete construction on a formerly unproductive shell built building (off NE 11th street in Redmond) that has never been occupied. If awarded this grant, the funds from the Deschutes County Forgivable Loan Fund will be used to complete build-out of the facility, purchase additional capital equipment and assist with hiring.

The 25 new hires will be placed in various production positions based on skill set in several of the aforementioned departments. PCC provides benefits related to medical (employee pays a portion), dental, vision, sick, vacation, bereavement leave, jury duty, 401K with match, health club reimbursement, long/short term disability, and earned quarterly cash bonuses.

EDCO has worked closely with PCC Schlosser on several successful expansions in the past that included the investment of equipment and jobs. This project, however, requires construction and infrastructure investments such that EDCO recommends accessing the Deschutes County Economic Development Loan Fund.

EDCO Recommendation

A due diligence process was completed by the REDI (Redmond Economic Development, Inc.) incentives review committee on March 23rd, 2016. The participants in the review included, Travis Browning, SVP Business Banking Manager at Bank of the Cascades, Paul Coil, CFO of Central Oregon Truck Company and Jon Stark, Manager of REDI. After a tour of the facility, thorough review of the application and review of the project and financial history, the committee supports the following recommendation:

EDCO is recommending to Deschutes County an award of \$50,000, which equates to \$2,000 per job created, by January 5th, 2018 (24 months following the application date).

Conditions include:

- Company employs 25 FTE in Deschutes County by January 5th, 2018 and maintains that employment over the 12 month period ending January 5th, 2019.
- Company provides quarterly employment updates and the ability to inspect complete financial statements from award date through termination of the yet-to-be executed agreement with Deschutes County.

Failure to meet the above provisions would result in partial or full repayment of the loan, with interest.



HEALTH SERVICES

2577 NE Courtney Drive, Bend, Oregon 97701
Public Health (541) 322-7400, Fax (541) 322-7465
Behavioral Health (541) 322-7500, Fax (541) 322-7565
www.deschutes.org

MEMORANDUM

DATE: May 18, 2016
TO: Board of County Commissioners
FROM: Eric Mone, Environmental Health Supervisor
SUBJECT: Support for Benevolent Organization Foodservice Licenses

Background:

Deschutes County Environmental Health licenses and inspects 20 Benevolent Organizations (BO) and 2 Governmental entities (GE), waiving licensure fees for the BO's and charging half fees for the GE's. State law requires local jurisdictions to charge a reduced fee for foodservice licenses for BO's. The practice in Deschutes County has been to waive the fee entirely for BO's (see attached list) and charge half-fees for GE's (also shown on attachment).

Issue:

Deschutes County Environmental Health licenses and inspects these foodservice organizations charging no fees or half fees to assist them in the great work they do in our communities. By waiving the fees to BO's and charging half fees to GE's it is difficult to balance the EH budget given our fee for service budget model.

Requested Action:

Decide whether to transfer \$15,407 in FY 2015-16 to Deschutes County Environmental Health to subsidize our foodservice licensure administration and 2 inspections per year for BO's and GE's.

2016-17 EXEMPT FACILITIES

<u>NAME OF FACILITY</u>	<u>NUMBER OF SEATS</u>	<u>FEE CHARGED</u>	<u>FEE IF NOT EXEMPT or GOV'T ENTITY</u>
Bend's Community Center	250	0	\$986.00
Bend Elks Lodge No. 1371	110	0	\$880.00
Bethlehem Inn	50	0	\$742.00
Centennial Park Concession Stand**	0	\$342.00	\$342.00
City Center Foursquare Church	25	0	\$742.00
Grounded	25	0	\$742.00
Jericho Table	50	0	\$742.00
La Pine Community Kitchen	75	0	\$880.00
La Pine Event Center**	350	\$493.00	\$493.00
La Pine Senior Center	140	0	\$880.00
Lavendar Thrift - Hope's Nutri Stop	25	0	\$742.00
Pavillion (The)**	50	\$371.00	\$371.00
Redmond Council for Senior Citizens	170	0	\$986.00
Salvation Army	80	0	\$880.00
Sheperd's House	50	0	\$742.00
Sisters Senior Center	80	0	\$880.00
St. Helens Center - Family Kitchen	72	0	\$880.00
St. Thomas Parish Center	400	0	\$986.00
Tag It Forward Coffee (Mobile)	0	0	\$366.00
Tag It Forward Coffee (Warehouse)	0	0	\$212.00
Bend Senior Center**	200	\$493.00	\$493.00
Elevation Café at COCC**	80	\$440.00	<u>\$440.00</u>
TOTAL EXEMPT AMOUNT			\$15,407.00

**Government Entity - 1/2 Fees Paid

DESCHUTES COUNTY HEALTH SERVICES MEMORANDUM

To: Board of County Commissioners
Christina Partain
From: Sheri Pinner / Loretta Gertsch
Business Manager
CC: Tami Ewing
Date: 5/20/2016
Re: FY 17 Health Services fee changes

Public Health

Fees for Vital Records are mandated by the State of Oregon. The Oregon Health Authority issued a new fee schedule effective January 1, 2016 and the FY17 Public Health Fee Schedule Vital Records section reflects the changes. Analysis was done on the fees listed and it was determined that several services were not being performed and thus were eliminated.

Public Health fees for New Patient Office Visits and Well Service Visits are calculated based on an actual cost analysis of FY15 services performed. The formula for calculating our fees is dictated by the Oregon Health Authority and our calculations are reviewed during the triennial review, performed by OHA. The majority of the FY17 fees for Office Visits and Well Services have been increased 1-5%. The two main variables for this calculation are actual expenditures and service utilizations. Fee descriptions were corrected on HLTH 50, 51, & 54.

The Maternal Child Health program fees are mandated by the Department of Human Services and will remain unchanged until mandated.

Fees for our Immunizations program are mandated by the Department of Human Services and typically adjust on a semi-annual basis. Most recent mandated fee increase is reflected in schedule.

Due to increases in costs of supplies, procedure time/labor, and microscope maintenance, In-House Testing fees are increased.

Our Environmental Health program had a fee increase effective 1/1/2016. There is one fee correction in the Tourist Facilities: HLTH 146 Recreation Park is equal to HLTH 145 Traveler's accommodation in cost analysis.

Behavioral Health

Health Services utilizes a "unit cost calculator" excel tool to set our annual behavioral health service fees. Historically, this tool was created to provide Oregon Community Mental Health Programs with a reliable and standard methodology for calculating unit costs for the services we provide.

In 2014, WEBCO contracted with Dale Jarvis to update the tool, creating a less complex calculation and process. Most recently BestCare, Lutheran Community Services and Deschutes County contracted with Mr. Jarvis to analyze and compare the FY 16 fees for the three organizations. We believe this regional discussion regarding fee setting methodologies will continue and include PacificSource Community Solutions as our CCO.

Currently, the fee setting formula is a calculation that uses our budgeted expenditures, budgeted direct service personnel, and number of hours available for services.

Using the revised unit cost calculator resulted in very small variances ranging from a 10% decrease to a 23% decrease for hourly services. The major factor relating to the decrease in FY 17 fees is Health Services changed the way we budget for personnel services. Previous personnel budgets were budgeted at 100%. Beginning in FY 17, we have budgeted a 6% (\$1.5 M) vacancy savings for unfilled positions. Additionally, DeAnn Carr was involved throughout this process making sure we had an accurate analysis of the number of hours available for services, commonly referred to as a productivity rate.

In summary, Health Services fees for FY 17 do not vary significantly from our FY 16 fees.



Memo

TO: Christina Partain, Accounting Technician

FROM: Beth Raguine, Business Manager

DATE: May 16, 2016

RE: FY 2017 Fee Schedule changes to Sheriff's Office fees

Fees generated by Sheriff's Office operations will no longer be listed under the Countywide or Rural Service Districts. These fees will be recorded under the Sheriff's Office Fund 255. This change is being made to identify revenue generated by the Sheriff's Office separately from revenue based on the tax districts.

The following changes are requested to the Sheriff's Office fee schedule for FY 2017:

- "SH 23" is being eliminated due to the transition from the 800 Mhz radio system in FY 2017. This fee is no longer necessary.
- Two new fees are being added for responses to False Alarms:
 - A new fee for False Alarm (4) is being added for \$200. This charge is for the fourth response to a false alarm in a 12 month period.
 - A new fee for False Alarm (5) is being added for \$300. This charge is for the fifth response to a false alarm in a 12 month period.

Building Fees	Calculated Cost / Deposit	Current Fee/Deposit levels	Jackson County	Clackamas Count	Lane County	Whatcom County, WA	Clark County, WA	City of Bend	Average
New Single-Family Home: 2745SF, 500 SF garage, value = \$328434	\$ 2,331	\$ 2,331	\$ 1,658	\$ 1,451	\$ 2,688	\$ 4,194	\$ 2,939	\$ 2,804	\$ 2,580.75
Electrical SF	\$ 405	\$ 405	\$ 215	\$ 462	\$ 286		\$ 666	\$ 425	\$ 351.33
Single-Family Addition: (635 SF) value = \$88,256		\$ 505	\$ 1,149	\$ 981	\$ 1,106	\$ 959	\$ 1,601	\$ 665	\$ 923.06
New Multi-Family: (10-units, 8,000 Sq. Ft.) value = \$813,760	\$ 7,440	\$ 7,440	\$ 5,182	\$ 5,484	\$ 5,790	\$ 6,254	\$ 11,028	\$ 3,753	\$ 6,418.64
New Commercial Office: (30,000 Sq. Ft. Office) value = \$3,546,000	32406	\$ 32,406	\$ 26,268	\$ 22,390	\$ 22,148	\$ 14,716	\$ 30,904	\$ 15,310	\$ 23,448.87
Commercial Alteration: \$75,000 valuation	\$ 685	\$ 685	\$ 872	\$ 883	\$ 1,009	\$ 958	\$ 2,586	\$ 601	\$ 1,084.74
Mechanical #Appliances;									\$ -
Furnace up to 100,000btu	\$ 49	\$ 23	\$ 7	\$ 18	\$ 46	\$ 16	\$ 66	\$ 22	\$ 32.01
Outdoor condenser (heat pump)	\$ 49	\$ 19	\$ 12.00	\$ 18	\$ 61	\$ 12	\$ 66	\$ 74	\$ 41.66
3 Bath fans	\$ 61	\$ 26	\$ 38.40	\$ 27	\$ 36	\$ 10	\$ 66	\$ 25	\$ 37.61
Range hood	\$ 49	\$ 11	\$ 5.50	\$ 12	\$ 40	\$ 10	\$ 66	\$ 12	\$ 27.80
Gas dryer vent	\$ 49	\$ 15	\$ 3.70	\$ 9	\$ 36	\$ 10	\$ 66	\$ 12	\$ 26.44
Gas fire place	\$ 61	\$ 27	\$ 7.30	\$ 18	\$ 92	\$ 10	\$ 66	\$ 22	\$ 39.38
Plumbing # WC	\$ 62	\$ 26	\$ 18.63	\$ 31	\$ 48	\$ 10	\$ 122		\$ 41.62
Planning Fees	Calculated Cost / Deposit	Current Fee/Deposit levels	Jackson County	Clackamas Count	Lane County	Whatcom County, WA	Clark County, WA	City of Bend	Average
Conditional Use permit	\$ 3,025	\$ 2,365	\$ 1,700	\$ 3,945	\$ 2,600	\$ 2,300	\$ 5,678	\$ 2,895	\$ 3,163
Final Plat - 10 lots	\$ 1,891	\$ 670	\$ 620	\$ 2,600	\$ 2,600	\$ 500	\$ 2,627	\$ 1,228	\$ 1,724
Property Line Adjustment	\$ 732	\$ 485		\$ 315	\$ 390	\$ 1,050	\$ 408	\$ 1,024	\$ 560
Site Plan Review	\$ 6,070	\$ 3,200	\$ 1,193	\$ 510	\$ 2,600		\$ 3,453	\$ 10,125	\$ 3,422
Subdivision Tentative Plat - 25 lots	\$ 7,801	\$ 5,895		\$ 6,215	\$ 9,000	\$ 5,250	\$ 7,773	\$ 9,996	\$ 6,576



Deschutes County Board of Commissioners
1300 NW Wall St., Bend, OR 97703-1960
(541) 388-6570 - Fax (541) 385-3202 - www.deschutes.org

WORK SESSION AGENDA

DESCHUTES COUNTY BOARD OF COMMISSIONERS

1:30 P.M., MONDAY, MAY 23, 2016

Pursuant to ORS 192.640, this agenda includes a list of the principal subjects anticipated to be addressed at the meeting. This notice does not limit the ability of the Board to address additional subjects. Meetings are subject to cancellation without notice. This meeting is open to the public and interested citizens are invited to attend.

Work Sessions allow the Board to discuss items in a less formal setting. Citizen comment is not allowed, although it may be permitted at the Board's discretion. If allowed, citizen comments regarding matters that are or have been the subject of a public hearing process will NOT be included in the official record of that hearing. Work Sessions are not normally video or audio recorded, but written minutes are taken for the record.

-
1. ODOT Update – Gary Farnsworth, Bob Bryant, Amy Pfeiffer & Della Mosier
 2. Update regarding Local Schools – Shay Mikalson, Bend/La Pine Schools Superintendent
 3. Consideration of Business Loan Request – Jon Stark, EDCO; Judith Ure
 4. Discussion regarding Support for Benevolent Organization Foodservice Licenses – Eric Mone, Environmental Health

Meeting dates, times and discussion items are subject to change. All meetings are conducted in the Board of Commissioners' meeting rooms at 1300 NW Wall St., Bend, unless otherwise indicated. If you have questions regarding a meeting, please call 388-6572.

Deschutes County encourages persons with disabilities to participate in all programs and activities. To request this information in an alternate format, please call (541) 617-4747, or email ken.harms@deschutes.org.

5. Finance Update – *Wayne Lowry*

6. Review of Fee Schedule – *Christina Partain*

7. Consideration of a Grant Application for Oregon Health Authority Funding for Staffing to Assist Potential Oregon Health Plan Clients – *David Inbody*

8. Other Items

These can be any items not included on the agenda that the Commissioners wish to discuss as part of the meeting, pursuant to ORS 192.640.

At any time during the meeting, an executive session could be called to address issues relating to ORS 192.660(2)(e), real property negotiations; ORS 192.660(2)(h), litigation; ORS 192.660(2)(d), labor negotiations; ORS 192.660(2)(b), personnel issues; or other executive session categories.

Executive sessions are closed to the public; however, with few exceptions and under specific guidelines, are open to the media.

9. Adjourn

Meeting dates, times and discussion items are subject to change. All meetings are conducted in the Board of Commissioners' meeting rooms at 1300 NW Wall St., Bend, unless otherwise indicated. If you have questions regarding a meeting, please call 388-6572.

Deschutes County encourages persons with disabilities to participate in all programs and activities. To request this information in an alternate format, please call (541) 617-4747, or email ken.harms@deschutes.org.