

**DESCHUTES COUNTY
PUBLIC SAFETY COORDINATING COUNCIL**



Tuesday April 7, 2015 - 3:30 PM

Allen Room, Deschutes Services Building, 1300 NW Wall, Bend, OR

Agenda

- I Call to Order & Introductions**
Chair Sullivan

- II August Minutes** **Attachment 1**
Chair Sullivan
Action: Approve January minutes

- III Public Comment**
Chair Sullivan

- IV DeschutesSafe**
John Hummel
Brief Council members on proposal

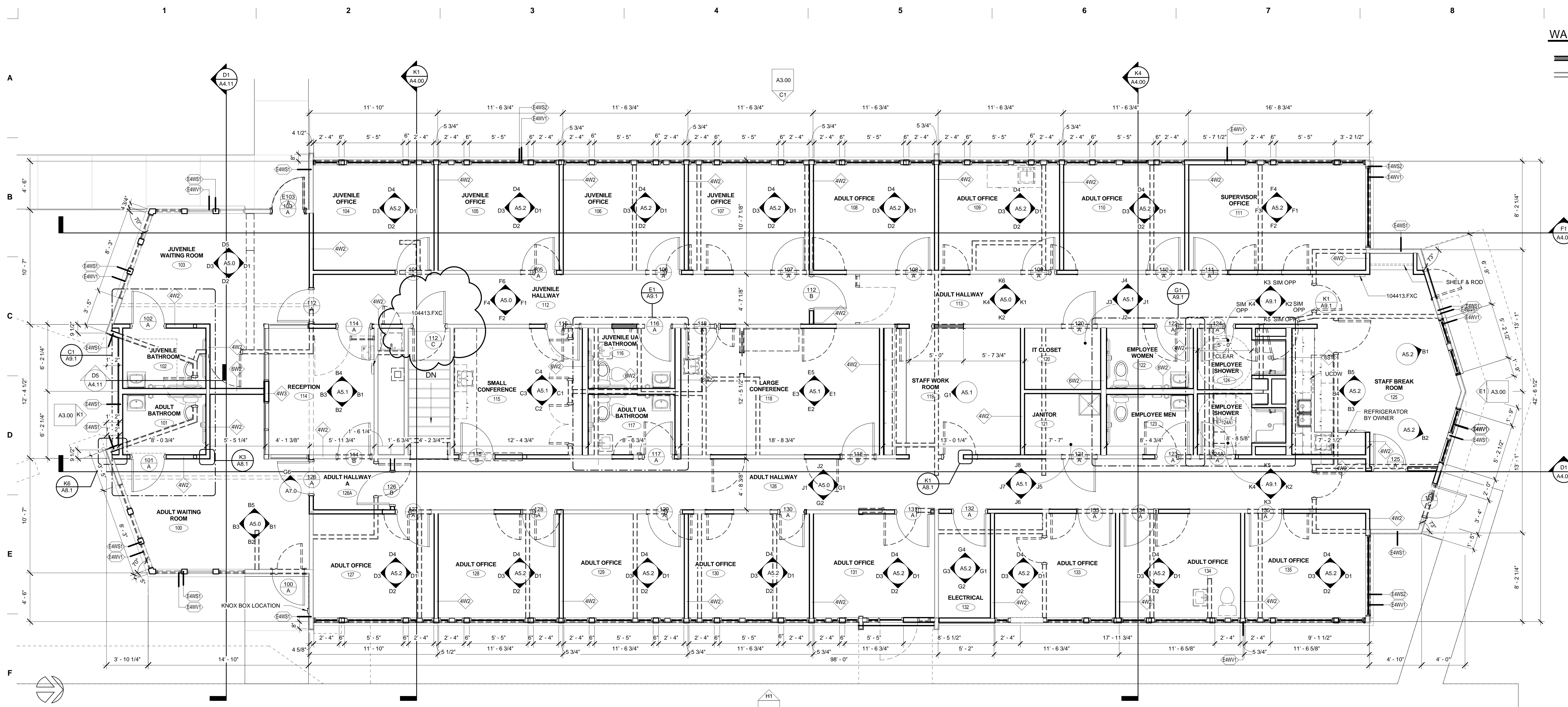
- V Public Safety Legislation**
Chair Sullivan
Council members to highlight priority legislation

- VI Redmond Community Justice Offices**
Ken Hales
Brief Council on temporary locations and facility remodel **Attachment 2**

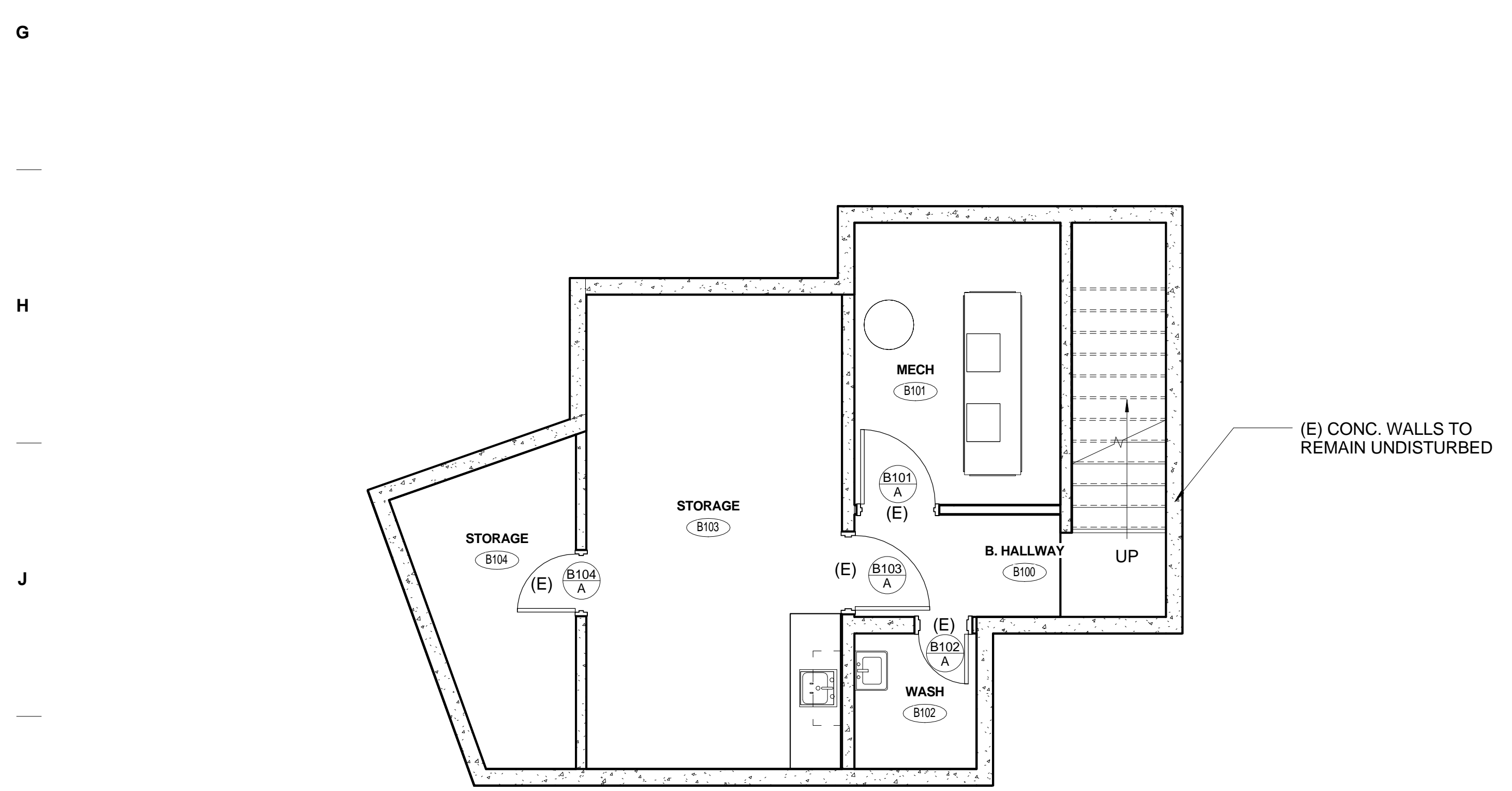
- VII Other Business**
Judge Sullivan

WALL TYP. LEGEND

-  NEW WALL
-  (E) WALL TO REMAIN

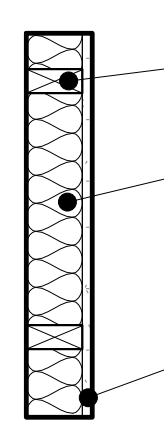
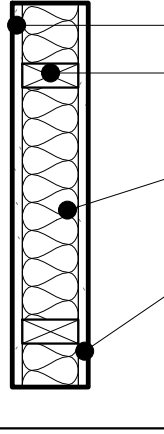
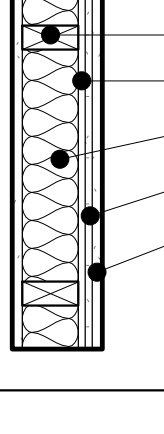
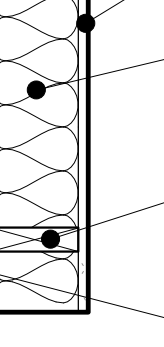


G1 FLOOR PLAN 1ST LEVEL
NOTE: CONTRACTOR TO VERIFY ALL DIMENSIONS OF EXISTING CONDITIONS

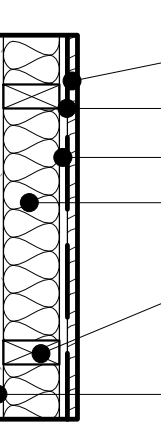
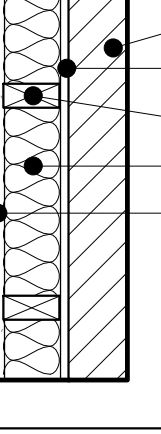



K1 FLOOR PLAN BASEMENT LEVEL
1/4" = 1'-0" @ FULL SIZE

INTERIOR WALL TYPES

| WALL TYPES | ASSEMBLY | KEYNOTES | DESCRIPTION |
|------------|---|------------|----------------------------|
| AW1 |  | 061000.WFR | WOOD FRAMING AT 16" O.C. |
| | | 072100.SB | SOUND BATT INSULATION |
| | | 092900.IGB | INTERIOR GYPSUM BOARD |
| AW2 |  | 092900.IGB | INTERIOR GYPSUM BOARD |
| | | 061000.WFR | WOOD FRAMING AT 16" O.C. |
| | | 072100.SB | SOUND BATT INSULATION |
| AW3 |  | 092900.IGB | INTERIOR GYPSUM BOARD 5/8" |
| | | 061000.WFR | WOOD FRAMING AT 16" O.C. |
| | | 134713.BP | BULLET PROOF PANEL FURRING |
| EW1 |  | 061000.WFR | WOOD FRAMING AT 16" O.C. |
| | | 092900.IGB | INTERIOR GYPSUM BOARD |

EXTERIOR WALL TYPES

| WALL TYPES | ASSEMBLY | KEYNOTES | DESCRIPTION |
|------------|---|------------|--------------------------|
| EW1 |  | 061500.WD | ? |
| | | 061600.WBM | ? |
| | | 061600.PWS | PLYWOOD SHEATHING |
| | | 072100.BI | BLANKET INSULATION |
| EW2 |  | 061000.WFR | WOOD FRAMING AT 16" O.C. |
| | | 092900.IGB | INTERIOR GYPSUM BOARD |
| | | 042000.FB | FACE BRICK (VENEER) |
| | | 061600.PWS | PLYWOOD SHEATHING |
| EW3 |  | 061000.WFR | WOOD FRAMING |
| | | 072100.BI | BLANKET INSULATION |
| | | 092900.IGB | INTERIOR GYPSUM BOARD |

PERMIT SET

UNGER BUILDING REMODEL

DESCHUTES COUNTY

BLRB architects

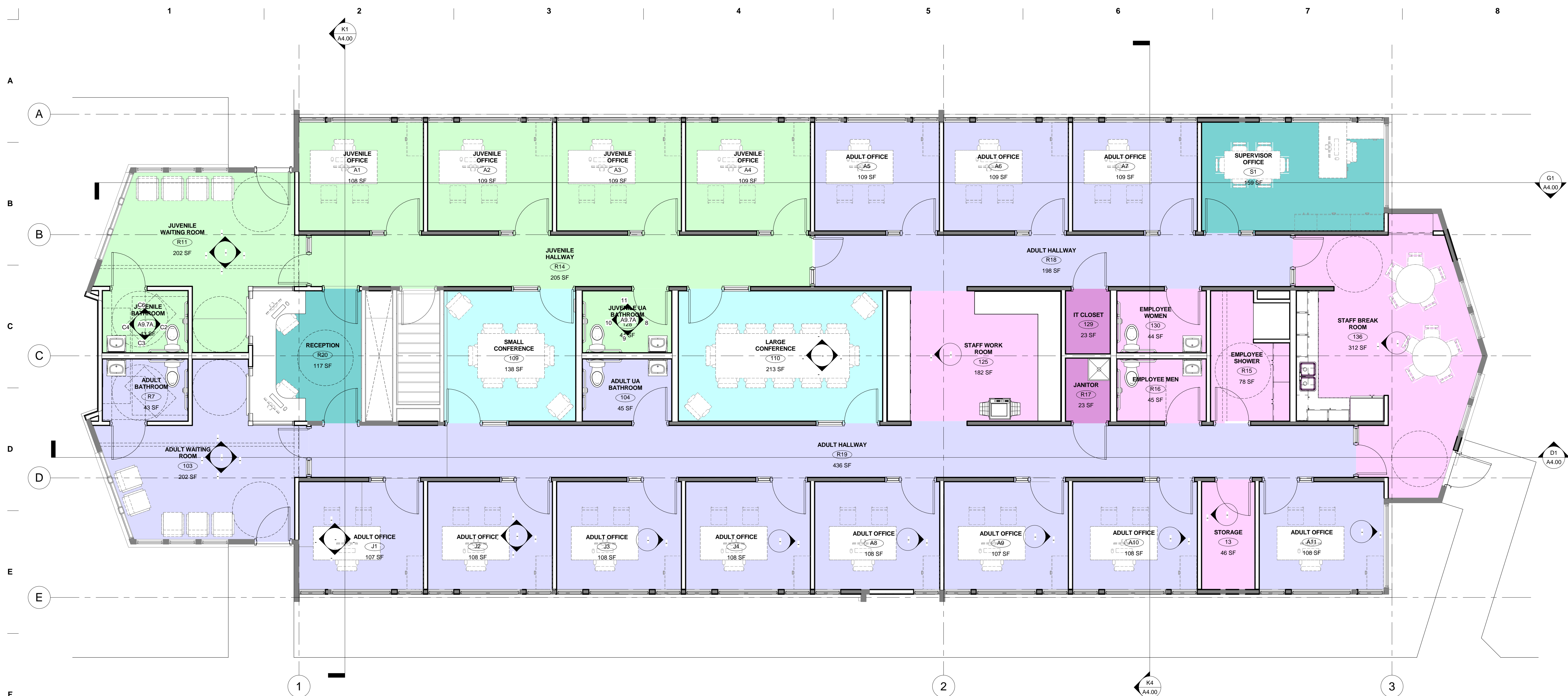
TACOMA | SPOKANE | PORTLAND | BEND
 1250 Pacific Ave. Suite 200 Washington 98402 253.621.5255 | 505 W Riverside Suite 500 Washington 98201 509.325.5988 | 1803 SW 26th Avenue Suite 1000 Oregon 97104 503.533.0700 | 404 SW Columbia Suite 200 Oregon 97102 503.533.6566 | BLRB.com

Drawing Title: **OVERALL FLOOR PLAN**

| | | | |
|----------|---|--------------|--------|
| Date: | 12-15-2014 | Drawn By: | DTL |
| Revised: | 1-22-2015 | Project No.: | 14.34B |
| Stamp: |  | | |

A2.1

BLRB ARCHITECTS, P.S.

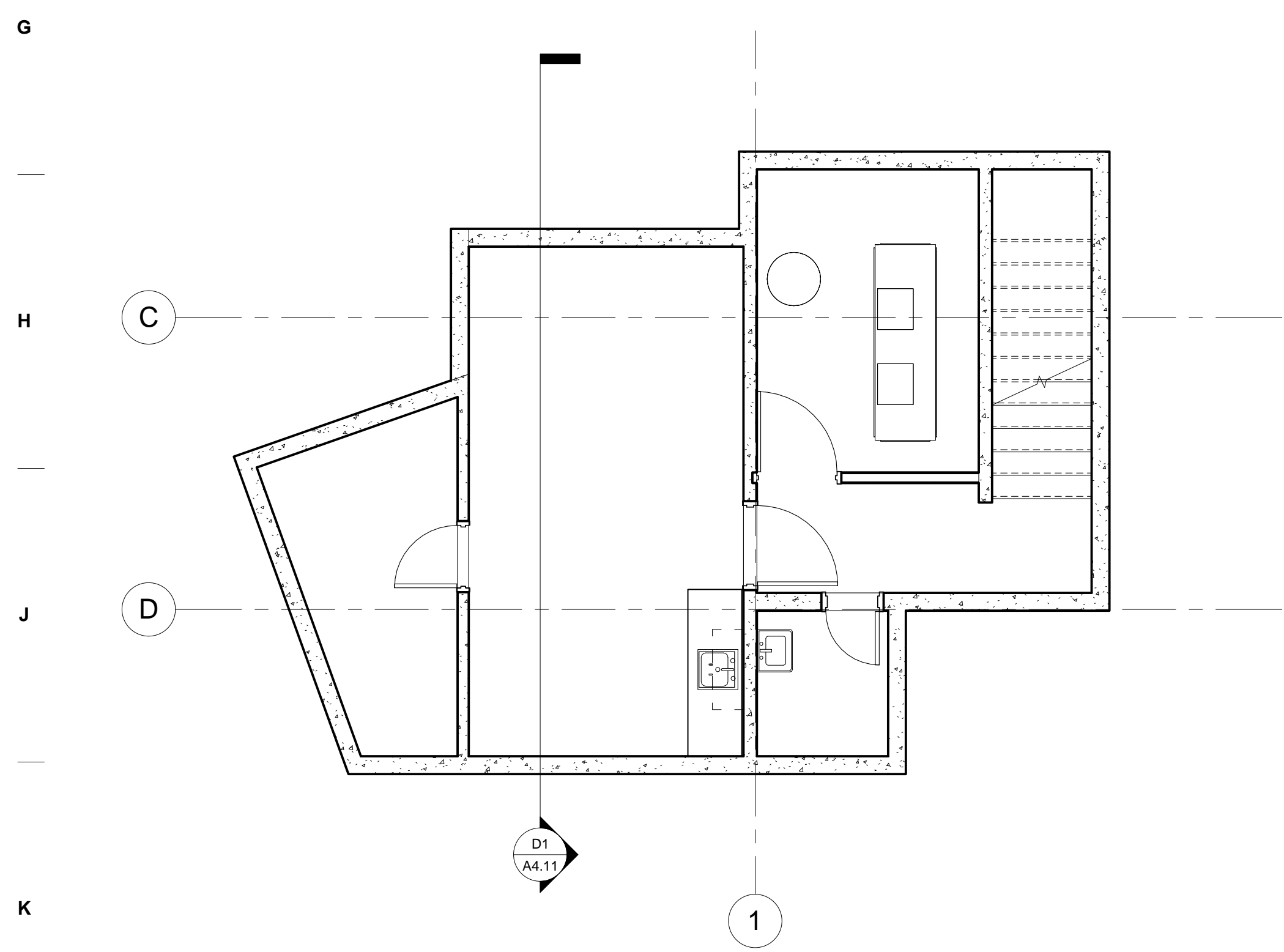


MATERIALS KEY

ROOM LEGEND

- 13 STORAGE
- 101 JUVENILE WAITING ROOM
- 103 ADULT WAITING ROOM
- 104 ADULT UA BATHROOM
- 108 JUVENILE
- 109 SMALL CONFERENCE
- 110 LARGE CONFERENCE
- 122 MECHANICAL ROOM
- 125 STAFF WORK ROOM
- 126 IT CLOSET
- 127 JUVENILE BATHROOM
- 128 JUVENILE UA BATHROOM
- 129 IT CLOSET
- 130 EMPLOYEE WOMEN
- 131 EMPLOYEE MEN
- 132 ADULT HALLWAY
- 135 STAFF WORK ROOM
- 136 STAFF BREAK ROOM
- A0 JUVENILE WAITING ROOM
- A1 JUVENILE OFFICE
- A2 JUVENILE OFFICE
- A3 JUVENILE OFFICE
- A4 JUVENILE OFFICE
- A5 ADULT OFFICE
- A6 ADULT OFFICE
- A7 ADULT OFFICE
- A8 ADULT OFFICE
- A9 ADULT OFFICE
- A10 ADULT OFFICE
- A11 ADULT OFFICE
- ADULT OFFICE #5
- OFFICE #5
- J0 JUVENILE WAITING ROOM
- J1 ADULT OFFICE
- J2 ADULT OFFICE
- J3 ADULT OFFICE
- J4 ADULT OFFICE
- J5 JUVENILE WAITING ROOM
- R1 RECEPTION
- R2 ADULT WAITING ROOM
- R3 JUVENILE HALLWAY
- R4 ADULT HALLWAY
- R5 ADULT WAITING ROOM
- R6 RECEPTION
- R7 ADULT BATHROOM
- R8 JUVENILE BATHROOM
- R9 ADULT WAITING ROOM
- R10 JUVENILE WAITING ROOM
- R11 JUVENILE WAITING ROOM
- R12 ADULT WAITING ROOM
- R13 ADULT HALLWAY
- R14 JUVENILE HALLWAY
- R15 EMPLOYEE SHOWER
- R16 EMPLOYEE MEN
- R17 JANITOR
- R18 ADULT HALLWAY
- R19 ADULT HALLWAY
- R20 RECEPTION
- S1 SUPERVISOR OFFICE

FLOOR PLAN LEVEL 1
 G1 1/4" = 1'-0" @ FULL SIZE



FLOOR PLAN BASEMENT
 K1 1/4" = 1'-0" @ FULL SIZE

BUILDING SQUARE FOOTAGE

1ST FLOOR = 4,844 SQ FT
 BASEMENT = 450 SQ FT
 TOTAL = 5,294 SQ FT

CONSTRUCTION DOCUMENT SET

**DESCHUTES COUNTY
UNGER BUILDING**

DESCHUTES COUNTY

BLRB architects

| | | | |
|---|--|--|--|
| TACOMA 1250 Pacific Ave. Suite 100 Washouak WA 98601 253.627.5599 | SPOKANE 205 W Riverside Suite 100 Washouak WA 98601 509.352.5589 | PORTLAND 100 SW 15th Avenue Suite 1000 Oregon 97204 503.535.0707 | BEND 414 SW Columbia Suite 200 Oregon 97702 541.591.6506 BLRB.com |
|---|--|--|--|

Drawing Title:
OVERALL FLOOR PLANS

| | |
|------------------|---------------------|
| Date: 08-08-2014 | Drawn By: DTL |
| Revised: 00 | Project No. 14.345B |
| Stamp | Sheet No. |

A2.01

of

BLRB ARCHITECTS, P.S.

8/8/2014 2:39:29 PM