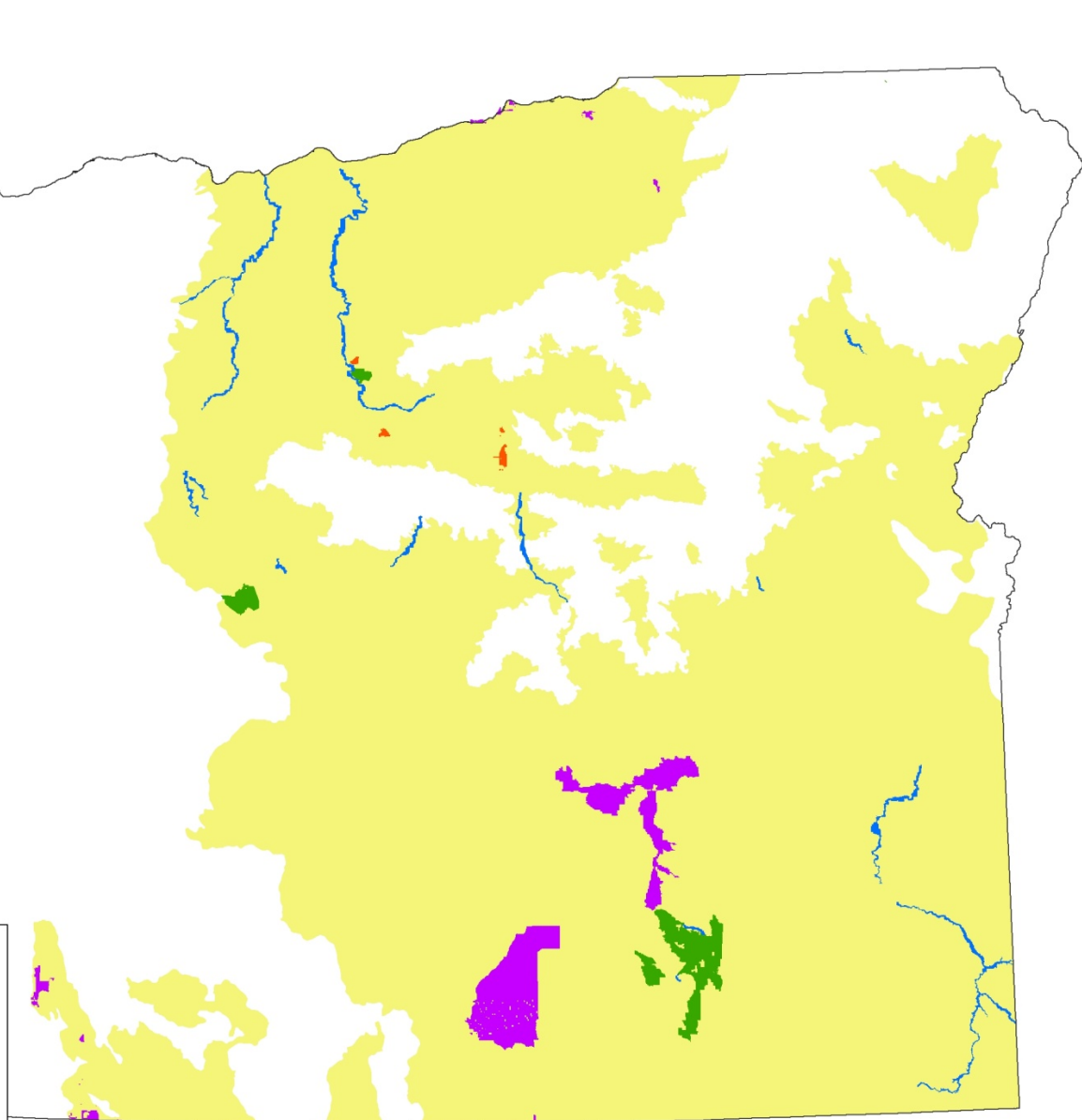







Owyhee Canyonlands Conservation Proposal

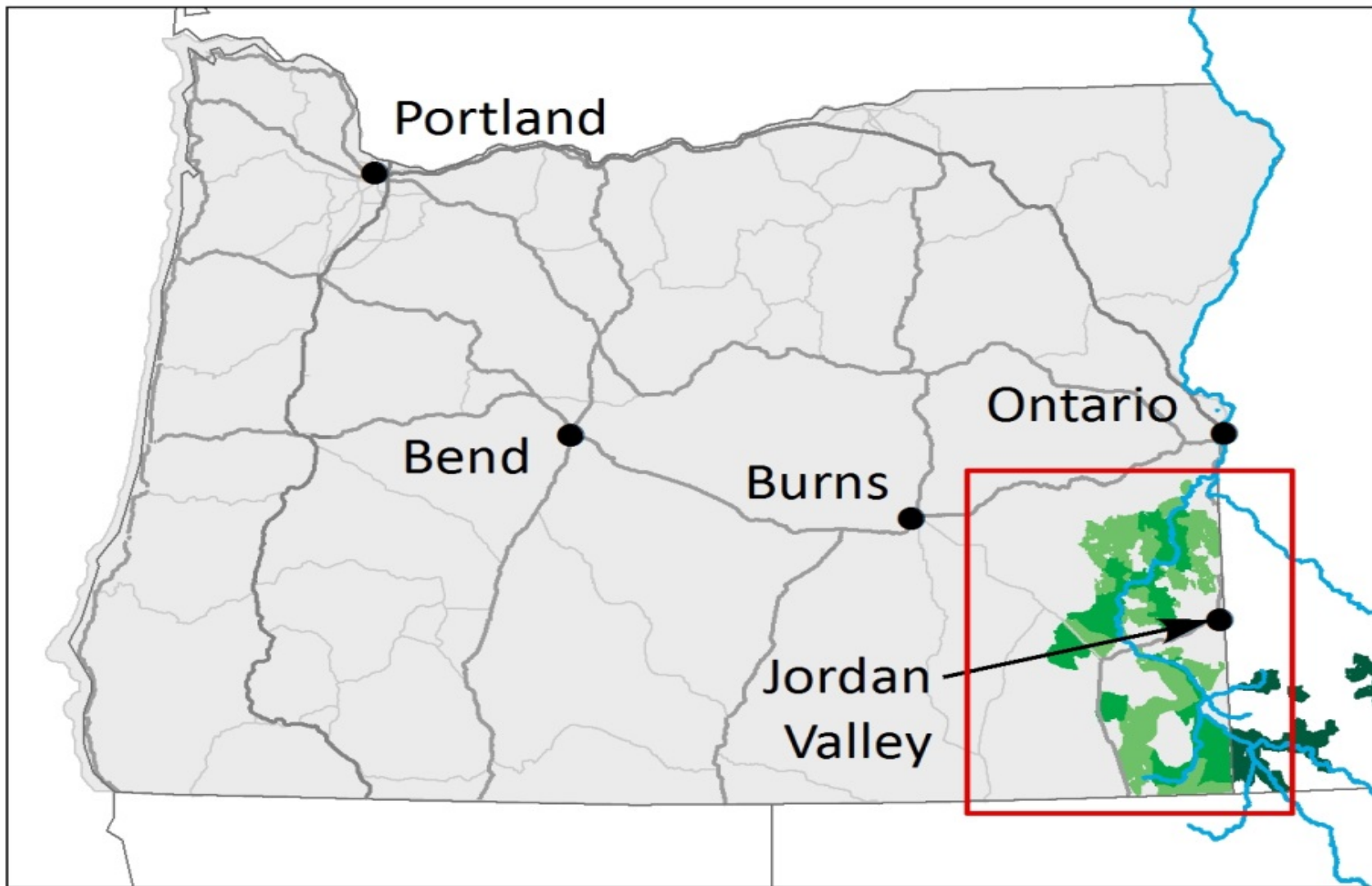


Dan Morse | Conservation Director
Oregon Natural Desert Association | December 21, 2015

Federally Protected Areas in Oregon's Arid Lands (906,700 acres)



-  Wild & Scenic River (188,600 acres)
-  National Wildlife Refuge (494,900 acres)
-  National Monument (12,100 acres)
-  Wilderness (211,100 acres)
-  Arid Land Ecosystem (27,615,000 acres)



OREGON

IDAHO

Honeycombs

Fish the Owyhee River

Birch Creek Historical Ranch

Succor Creek

Chalk Basin

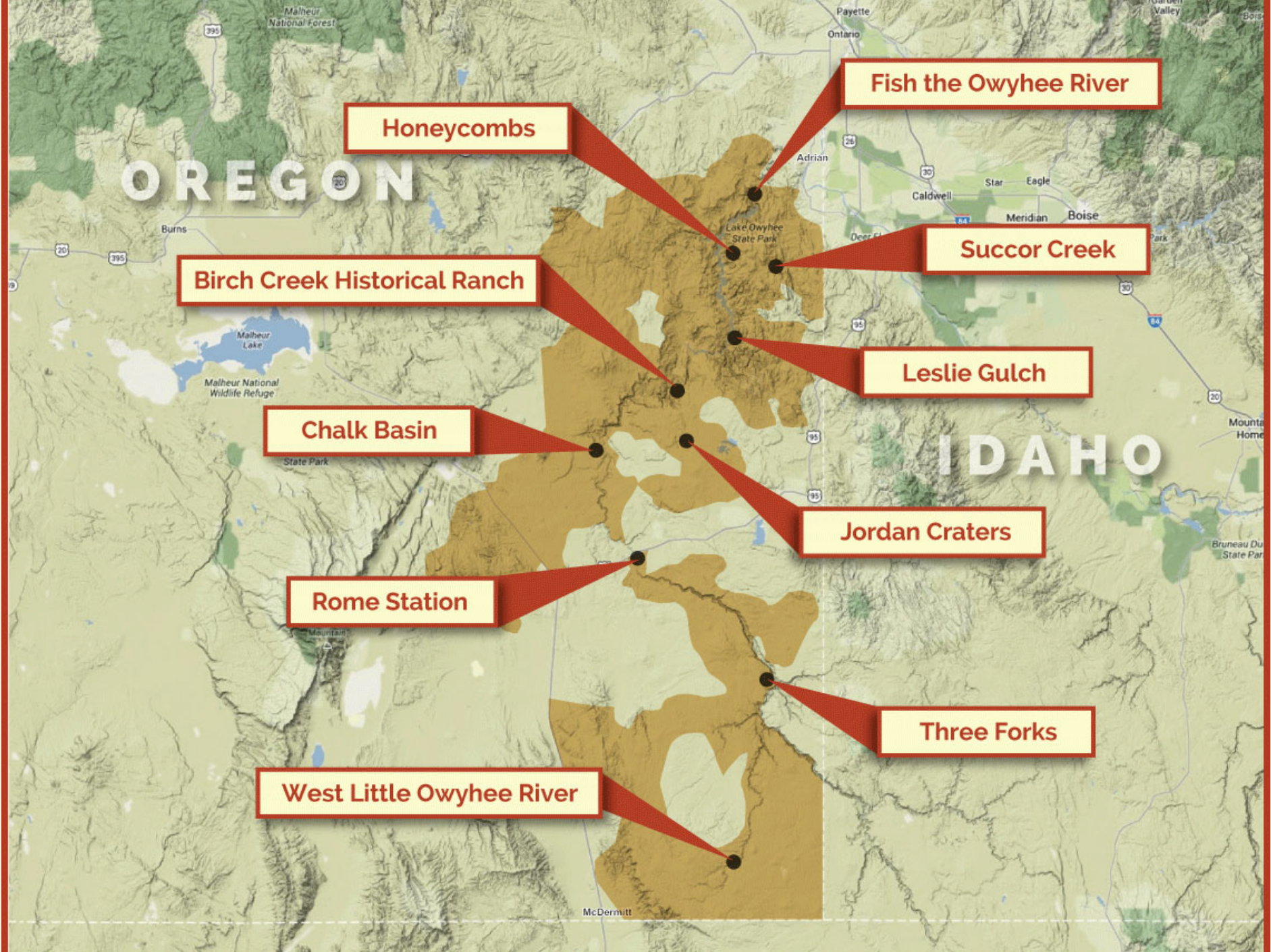
Leslie Gulch

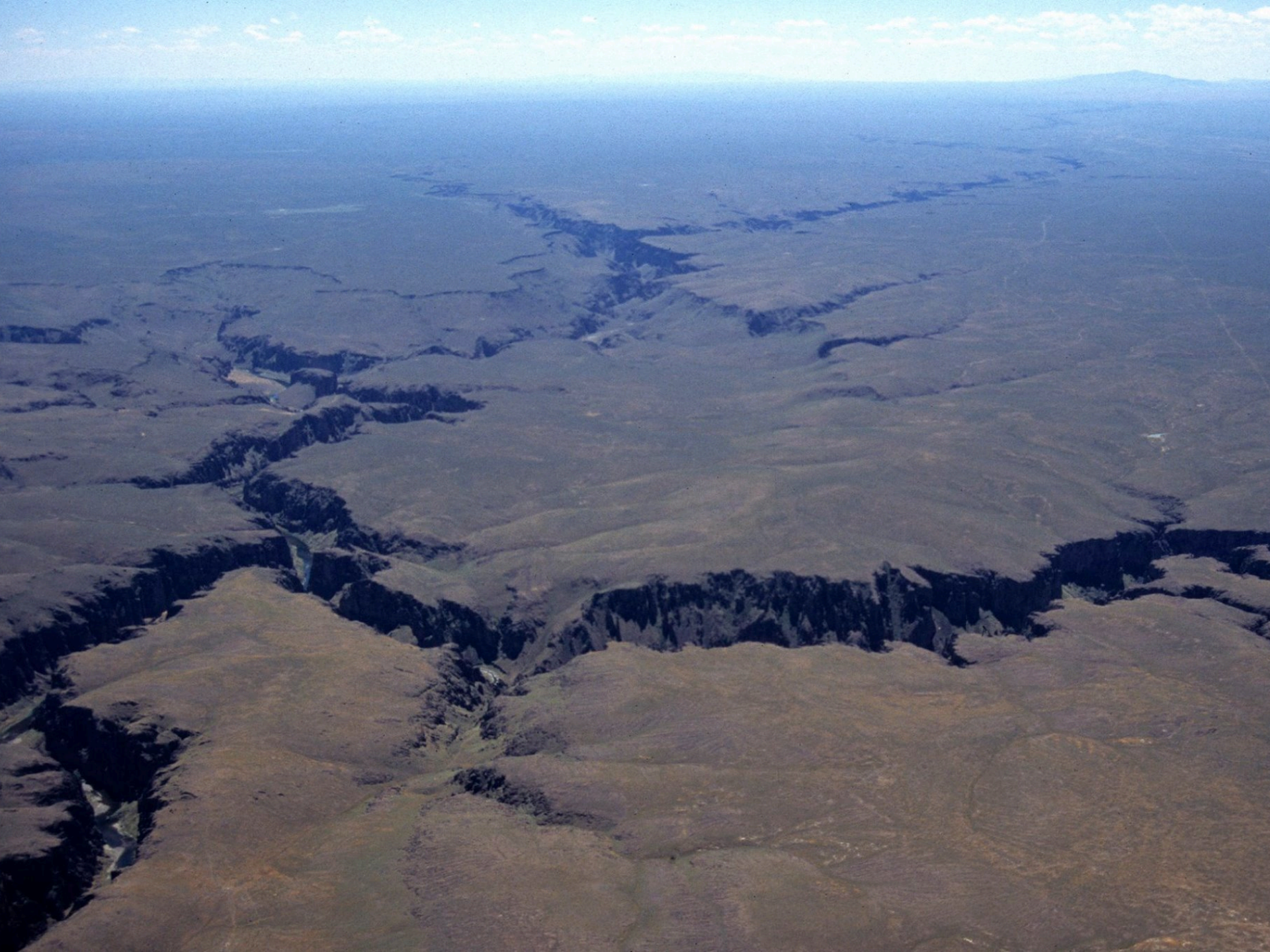
Jordan Craters

Rome Station

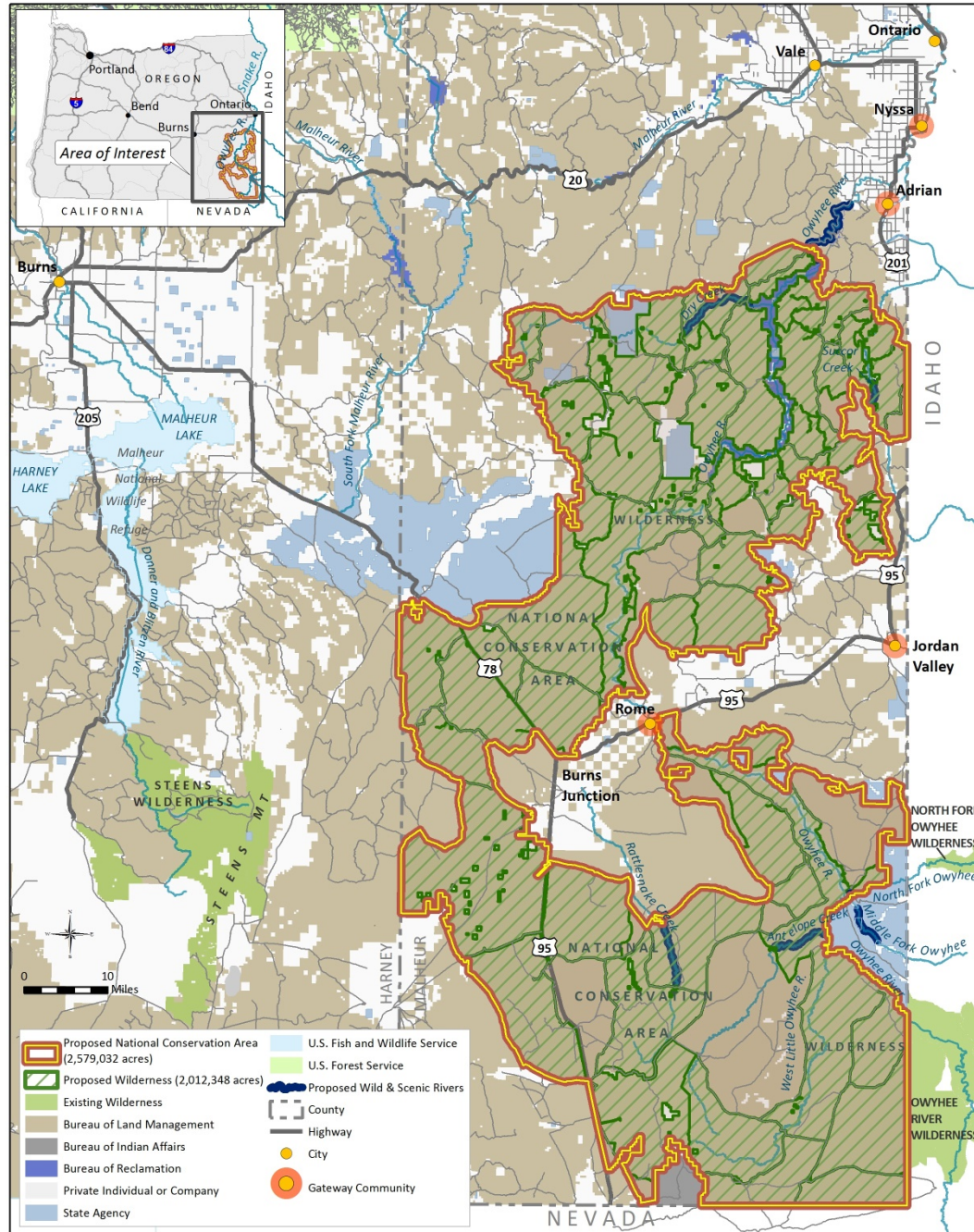
Three Forks

West Little Owyhee River





Owyhee Canyonlands Conservation Proposal



Who is The Owyhee Coalition?

The Campaign for the Owyhee Canyonlands is a group of citizens and organizations that believes we must have the foresight to protect this special place.

- Thousands of people from throughout the state and country
- ONDA
- American Rivers
- American Whitewater
- Mazamas
- Sierra Club
- Pew Charitable Trusts
- Defenders of Wildlife
- Conservation Lands Foundation
- The Wilderness Society





Wildlife Habitat Protected

- The State of Oregon retains all management of fish and wildlife species, BLM would continue to manage habitat
- Prime wildlife habitat for a variety of upland game bird and big game species would be protected
- Access for wildlife management would continue
- New disturbance to wildlife habitat such as sage-grouse would be minimized



Hunting and Fishing Opportunities Maintained

- The State of Oregon retains all management of fish and wildlife species
- Majority of existing roads would remain open – ensuring hunting access
- Prime wildlife habitat for a variety of upland game bird and big game species would be protected
- Access for wildlife management activities would continue









Major roads and routes remain open for motorized travel



Recreation opportunities for businesses would be maintained and enhanced and economic benefits to the local economy would result



The region's wide-open spaces, mountains, canyons, rivers and other spectacular natural features set communities in the West apart from the rest of the country. These places enjoy benefits that can be measured directly. From 1970 to 2010, western **non-metro counties with more than 30 percent of the county's land base in protected federal status increased jobs by 345 percent**—more than four times faster than western non-metro counties with no protected federal land.

There is also a meaningful relationship between the amount of protected public land and higher per capita income levels. On average in 2010, **for every gain of 10,000 acres of protected public land in a western non-metro county, per capita income increased by \$436.**

- Headwaters Economics, 2013. The Economic Potential of Protected Public Land in Malheur County, Oregon



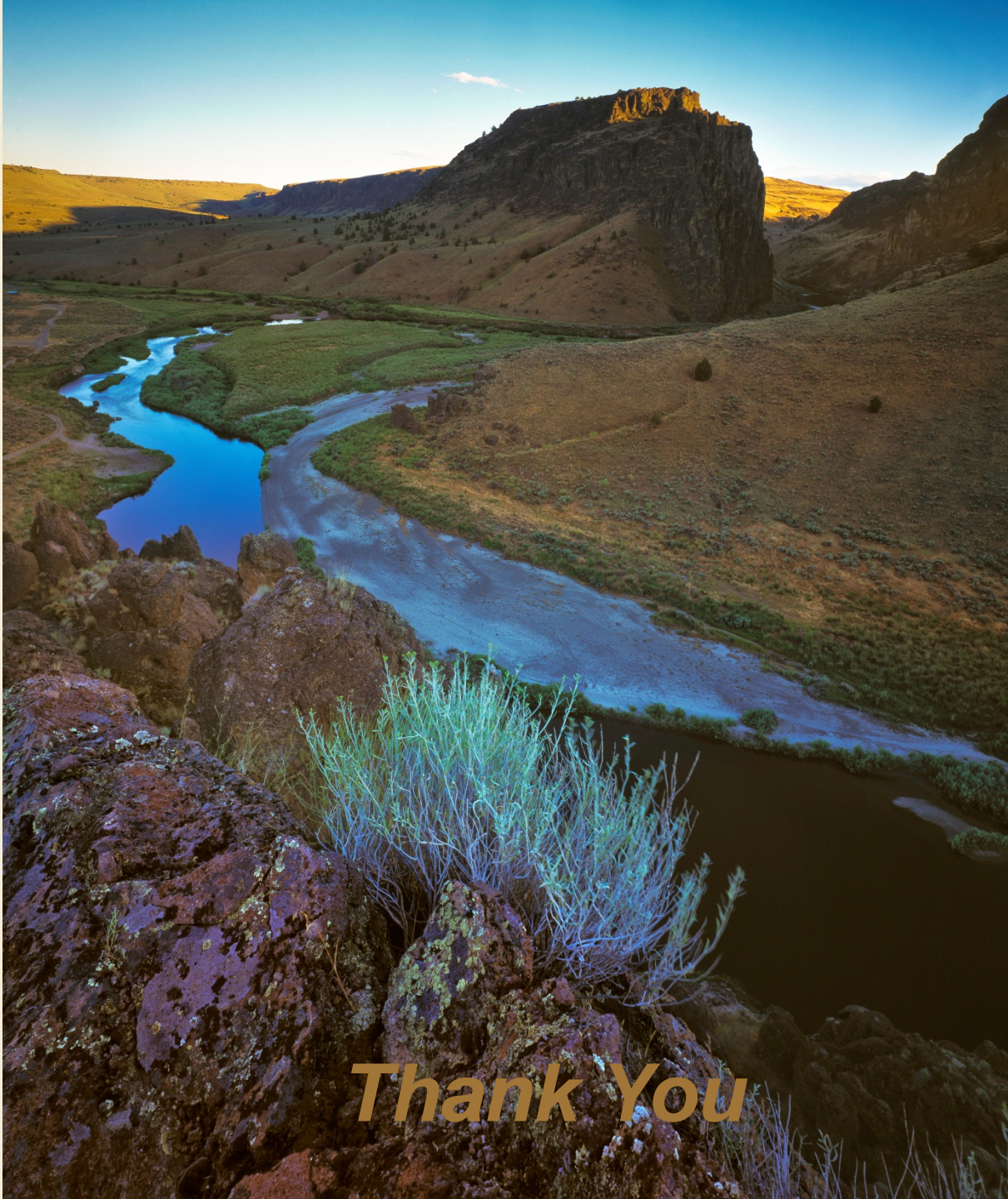
**Grazing would
continue**



Summary

- Protect wildlife habitat
- Maintain recreation opportunities
- Protect historical and cultural sites
- Maintain compatible existing uses
- Augment the local economy
- Prevent detrimental development impacts





Thank You